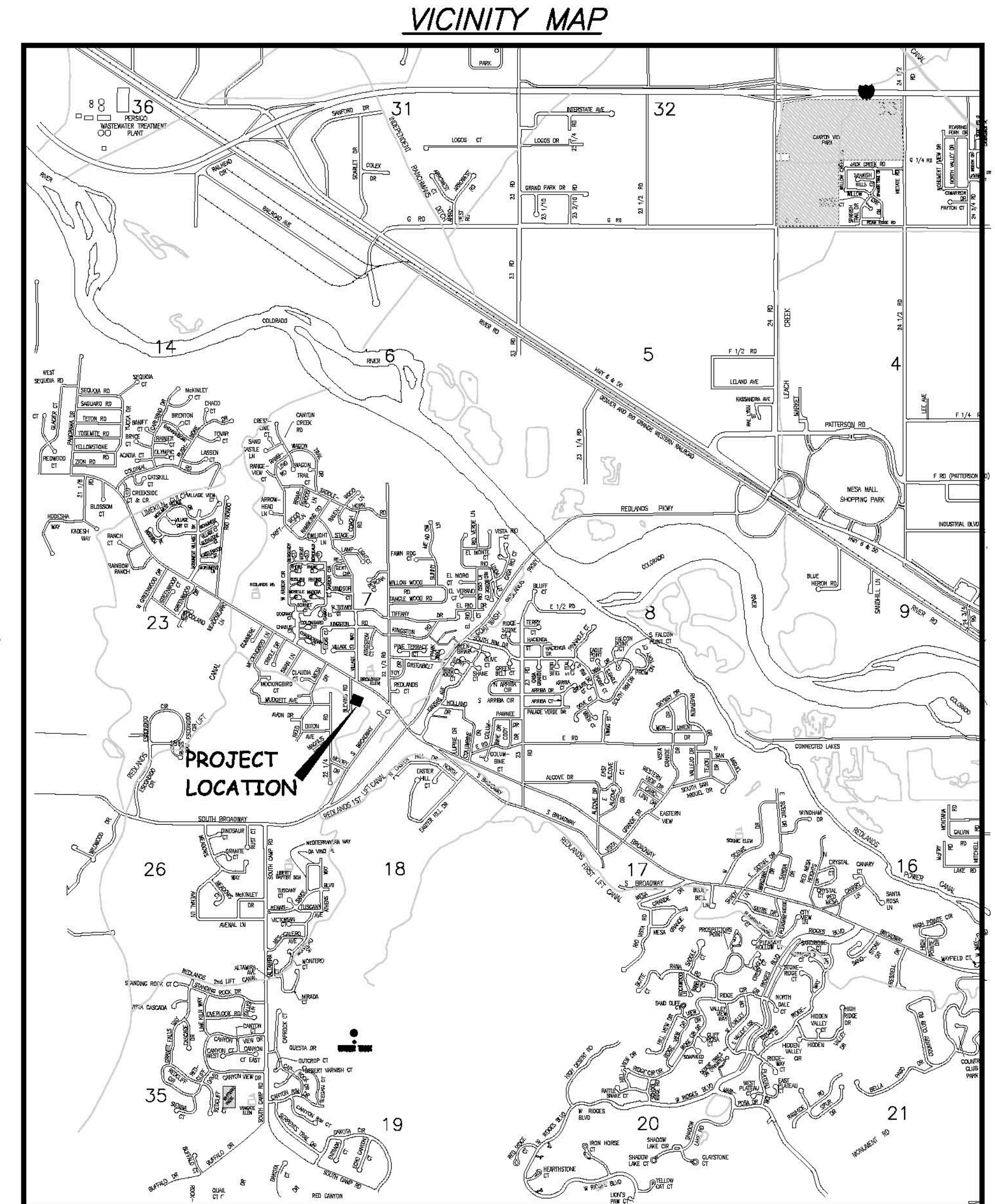


Sewer Services for 2245 Broadway and 2245 1/2 Broadway June 2008

AS BUILT
9/2010

- 1 ————— Cover Sheet
- 2 ————— Standard Abbreviations, Legend, and Symbols
- 3 ————— Summary of Approximate Quantities
- 4 ————— Sewer Service Plan and Profile



N.T.S.

UTILITIES AND AGENCIES								
AGENCY	NAME	POSITION	ROLE	MAILING ADDRESS	STREET ADDRESS	CITY, STATE	VOICE-WK	FAX
GRAND JUNCTION, CITY OF	JUSTIN VENSEL	PROJECT MANAGER	PROJECT MANAGER	250 N. 5th STREET	250 N. 5th STREET	GRAND JCT., CO 81501	(970) 244-1558	(970) 256-4017
GRAND JUNCTION, CITY OF	BRET GUILLORY	UTILITY ENGINEER	SANITARY SEWER	250 N. 5th STREET	250 N. 5th STREET	GRAND JCT., CO 81501	(970) 244-1590	(970) 256-4022
REDLANDS WATER & POWER CO.	GREG STRONG		IRRIGATION	2216 S. BROADWAY	2216 S. BROADWAY	GRAND JCT., CO 81503	(970) 243-2173	
BRESNAN	GLENN VANCIL		CABLE TV	2502 FORESIGHT CIRCLE	2502 FORESIGHT CIRCLE	GRAND JCT., CO 81504	(970) 245-8750	(970) 245-6803
U.S. WEST/QWEST	DAN WISEMAN	ENGINEER	TELEPHONE	2524 BLICKMAN ROAD	2524 BLICKMAN ROAD	GRAND JCT., CO 81504	(970) 244-4311	(970) 240-4349
UTE WATER	DARYL MOORE	ENGINEER	WATER	PO BOX 460		GRAND JCT., CO 81502	(970) 242-7491	(970) 242-9189
XCEL	STEVE LOPEZ	PROJECT MANAGER	GAS, ELECTRIC	2538 BLICKMAN ROAD	2538 BLICKMAN ROAD	GRAND JCT., CO 81504	(970) 244-2698	(970) 244-2661
VINEYARDS IRRIGATION SYSTEMS	JOHN HARRISON	MANAGER	IRRIGATION	N/A	N/A	GRAND JCT., CO	(970) 434-7518 (970) 260-9147	(970) 242-9189
PRIVATE DOMESTIC WATER SYSTEMS	ROBERT FUESTON	OWNER	UNUSED POTABLE WATER SYSTEM	2228 MOWRY DRIVE	2228 MOWRY DRIVE	GRAND JCT., CO 81503	(970) 245-9371	N/A

14004100.PDF

DRAWING STATUS:	
●	PROGRESS
○	FINAL CONSTRUCTION DRAWINGS
○	ASBUILT
DESIGNED BY:	
	DATE
REVIEWED BY:	
BRET GUILLORY, UTILITY ENGINEER	DATE
AUTHORIZED FOR CONSTRUCTION	
TRENTON C. PRALL, CITY ENGINEER	DATE
ACCEPTED AS CONSTRUCTED	
JUSTIN VENSEL, PROJECT MANAGER	DATE



*Public Works & Utilities
Engineering Division*

NOTE: NOTIFY AFFECTED UTILITY VENDOR 48 HOURS PRIOR TO EXCAVATIONS THAT WILL EXPOSE UTILITY LINES. THE COVER SHEET WILL HAVE A LISTING OF UTILITY VENDORS AND TELEPHONE NUMBERS.

REVISION	DESCRIPTION	DATE
REVISION ▲	_____	_____
REVISION ▲	_____	_____
REVISION ▲	_____	_____
REVISION ▲	_____	_____

ABBREVIATIONS

AASTHO	AMERICAN ASSOCIATION OF STATE HIGHWAY & TRANSPORTATION OFFICIALS
ABC	AGGREGATE BASE COURSE
AC	ASBESTOS CEMENT
AP	ANGLE POINT
ASB	ANCHORED STRAW BALES
ASP	ALUMINIZED STEEL PIPE
ASTM	AMERICAN SOCIETY FOR TESTING MATERIALS
AWWA	AMERICAN WATER WORKS ASSOCIATION
BC	BACK OF CURB
BF	BUTTERFLY VALVE
BOW	BACK OF WALK
BCR	BEGIN CURB RETURN
BOT	BOTTOM
BSWMP	BETTER STORM WATER MANAGEMENT PRACTICES
CH	CHORD
CAP	CORRUGATED ALUMINUM PIPE
CDOT	COLORADO DEPARTMENT OF TRANSPORTATION
CI	CAST IRON
C,G,& SW	CURB, GUTTER & SIDEWALK
CL	CENTER LINE
CL	CLEAR
CMP	CORRUGATED METAL PIPE
CO	CLEAN OUT
COMB	COMBINATION (AS IN STORM SEWER AND SANITARY SEWER)
CONC	CONCRETE
CSM	CITY SURVEY MONUMENT
CSP	CORRUGATED STEEL PIPE
CJ	COPPER
DI	DUCTILE IRON
DWY	DRIVEWAY
E	ELECTRIC
ECR	END CURB RETURN
EG	EDGE OF GUTTER
EL	ELEVATION
EP	EDGE OF PAVEMENT
EX	EXISTING
FB	FULL BODY
FC	FACE OF CURB
FG	FINISHED GRADE
E	FLOW LINE
FL	FLANGE
FM	FORCE MAIN
FO	FIBER OPTICS
FS	FAR SIDE
FTG	FOOTING
G	GAS
GB	GRADE BREAK
GM	GAS METER
GV	GATE VALVE
HBP	HOT BITUMINOUS PAVEMENT
HDPE	HIGH DENSITY POLYETHYLENE
INV	INVERT
IRR	IRRIGATION
L	LENGTH OF ARC
LC	LONG CHORD
LF	LINEAR FEET
LL	LONG ARC
LS	SHORT ARC
LT	LEFT
MB	MAILBOX
MCSM	MESA COUNTY SURVEY MONUMENT
MH	MANHOLE
MJ	MECHANICAL JOINT
MW	MILL WRAP
N/A	NOT APPLICABLE
NIC	NOT IN CONTRACT
NOP	NO ONE PERSON
NRCP	NON-REINFORCED CONCRETE PIPE
NS	NEAR SIDE
NTS	NOT TO SCALE
OHP	OVERHEAD POWER
OHT	OVERHEAD TELEPHONE
PC	POINT OF CURVATURE
PCC	POINT OF COMPOUND CURVATURE
PE	POLYETHYLENE
PERF	PERFORATED
PI	POINT OF INTERSECTION
PIP	PLASTIC IRRIGATION PIPE
POC	POINT ON CURVE
POT	POINT ON TANGENT
PR	PROPOSED
PRC	POINT OF REVERSE CURVATURE
PT	POINT OF TANGENCY
PVC	POLYVINYL CHLORIDE
R	RADIUS
RCP	REINFORCED CONCRETE PIPE
REQ'D	REQUIRED
RG	RESTRAINED GLANDS
RL	LONG RADIUS
ROW	RIGHT OF WAY
RP	RADIUS POINT
RR	RAIL ROAD
RS	SHORT RADIUS
RT	RIGHT
S	SLOPE
SAN	SANITARY
SC	SHORT CHORD
SCD	STANDARD CONTRACT DOCUMENTS
SCH	SCHEDULE
SF	SILT FENCE
SL	SECTION LINE
SSRB	STANDARD SPECIFICATIONS FOR ROAD & BRIDGE CONSTRUCTION
SSUU	STANDARD SPECIFICATIONS FOR CONSTRUCTION OF UNDERGROUND UTILITIES
STA	STATION
STL	STEEL
STM	STORM
T	TELEPHONE
TAN	LENGTH OF TANGENT
TC	TOP OF CURB
TH	TEST HOLE
TV	TELEVISION
(TYP)	TYPICAL
UU	UNDERGROUND UTILITIES
VC	VERTICAL CURVE
VCP	VITRIFIED CLAY PIPE
VPC	VERTICAL POINT OF CURVATURE
VPCC	VERTICAL POINT OF COMPOUND CURVATURE
VPRC	VERTICAL POINT OF REVERSE CURVATURE
VPI	VERTICAL POINT OF INTERSECTION
VPT	VERTICAL POINT OF TANGENCY
W	WATER
Δ	DELTA ANGLE

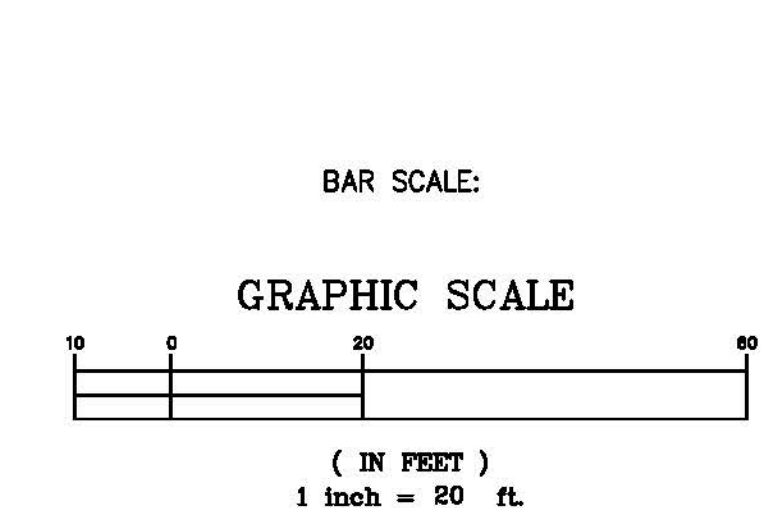
LEGEND

BSWMP DRAINAGE BASIN BOUNDARY	
BSWMP ANCHORED STRAW BALES	
BSWMP SILT FENCE	
BUILDING	
CONCRETE CURB AND GUTTER	
CONCRETE CURB, GUTTER, & SIDEWALK	
CONCRETE DITCH	
CONCRETE SIDEWALK	
CULVERT	
EARTH DITCH	
EDGE OF GRAVEL	
EDGE OF PAVEMENT	
FENCE (BARBED WIRE)	
FENCE (CHAIN LINK)	
FENCE (IRON)	
FENCE (PLASTIC)	
FENCE (TEMPORARY CONSTRUCTION)	
FENCE (WOOD)	
FENCE (WOVEN WIRE)	
GUARD RAIL	
HATCHING: INDICATES ASPHALT REMOVAL	
HATCHING: INDICATES CONCRETE REMOVAL	
HATCHING: INDICATES STAGING AREA	
LINE (CENTER OF IMPROVEMENTS)	
LINE (CITY LIMITS)	
LINE (CONTROL)	
LINE (EASEMENT)	
LINE (MONUMENT/SECTION)	
LINE (PROPERTY)	
LINE (RIGHT OF WAY)	
MATCH LINE	
PIPE (IRRIGATION)	
PIPE (SIPHON)	

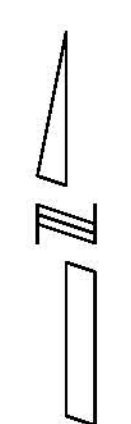
PROPOSED CONCRETE CURB AND GUTTER	
PROPOSED CONCRETE CURB, GUTTER, & SIDEWALK	
PROPOSED CONCRETE SIDEWALK	
PROPOSED "WET" UTILITIES (CONSTRUCTION NOTE WILL INDICATE TYPE, SIZE, AND MATERIAL OF NEW MAIN)	
ALL PROPOSED FEATURES NOT SHOWN IN LEGEND WILL BE SHOWN THE SAME AS THEIR EXISTING COUNTERPART, BUT INDICATED BY BOLDER LINETYPE	
RAIL ROAD	
RETAINING WALL	
STRIPING (CONTINUOUS WHITE)	
STRIPING (DASHED WHITE)	
STRIPING (CONTINUOUS YELLOW)	
STRIPING (DASHED YELLOW)	
TOP OF SLOPE	
CONTOUR LINES (SHOWN BETWEEN TOP & TOE)	
TOE OF SLOPE	
TRAFFIC DETECTOR LOOP	
UTILITY LINE (ABANDON) (THIS CASE A WATER LINE)	
UTILITY LINE (CABLE TV)	
UTILITY LINE (ELECTRIC)	
UTILITY LINE (FIBER OPTIC)	
UTILITY LINE (GAS)	
UTILITY LINE (HIGH VOLTAGE OVERHEAD POWER)	
UTILITY LINE (OVERHEAD POWER)	
UTILITY LINE (OVERHEAD TELEPHONE)	
UTILITY LINE (SANITARY SEWER)	
UTILITY LINE (SANITARY SEWER FORCE MAIN)	
UTILITY LINE (SANITARY SEWER SERVICE)	
UTILITY LINE (STORM SEWER)	
UTILITY LINE (STORM SEWER, PERFORATED)	
UTILITY LINE (STORM/SANITARY SEWER SEWER COMBINATION)	
UTILITY LINE (TELEPHONE)	
UTILITY LINE (WATER)	

SYMBOLS

BENCH MARK	
CATCH BASIN	
CLEAN OUT	
CURB STOP	
FIRE HYDRANT	
GUY WIRE ANCHOR	
HEADGATE	
IRRIGATION PUMP	
MAILBOX	
MANHOLE (ELECTRIC)	
MANHOLE (GAS)	
MANHOLE (SANITARY/STORM)	
MANHOLE (TELEPHONE)	
MANHOLE (TV)	
MANHOLE (WATER)	
METER (GAS)	
METER (WATER)	
PEDESTAL (TELEPHONE)	
PEDESTAL (TV)	
PROPERTY PIN	
PULL BOX	
REDUCER FITTING	
SIGN OR POST (SIGN TYPE NOTED)	
SPRINKLER HEAD	
STREET LIGHT	
SURVEY MONUMENT (CITY)	
SURVEY MONUMENT (TYPE NOTED)	
TEST HOLE	
TRAFFIC PAINT MARKING	
TRAFFIC SIGNAL POLE AND MAST ARM	
UTILITY POLE	
VALVE (GAS)	
VALVE (IRRIGATION)	
VALVE (WATER)	
VEGETATION (HEDGE OR BUSH)	
VEGETATION (TREE STUMP)	
VEGETATION (TREE) (CALIPER SIZE NOTED)	
WATER HYDRANT	
WEIR	
YARD LIGHT	



NORTH ARROW:



REVISION Δ	DESCRIPTION	DATE	DRAWN BY JCS	DATE 4-02
REVISION Δ			DESIGNED BY	DATE
REVISION Δ			CHECKED BY	DATE
REVISION Δ			APPROVED BY	DATE

SCALE	
PLAN	PROFILE
HORIZ. 1"=20'	HORIZ.
	VERT.



PUBLIC WORKS AND UTILITIES ENGINEERING DIVISION

CITY OF GRAND JUNCTION STANDARD ABBREVIATIONS, LEGEND, AND SYMBOLS SHEET

Item No	Const Note No	Reference No.	Construction Note Description	Quantity	Unit
1	333	102.9/108.2	102.9/108.2 - 4" SEWER SERVICE PIPE (SDR 35 PVC). INCLUDES TYPE A BEDDING AND HAUNCHING MATERIAL AND BACKFILL OF TRENCH WITH NATIVE MATERIALS MEETING 103.16 EARTH BACKFILL MATERIAL.	100	LF
2	364	102.9/108.2	102.9/108.2 - CONNECTION FROM 4" SDR-35 PVC GRAVITY PIPE TO 2" 100 PSI PURE CORE PRESSURE SEWER PIPE TO BE ACCOMPLISHED USING A COMPRESSION BY FEMALE BRASS ADAPTOR, SCHEDULE 80 TOE NIPPLE, 4"x2" BUSHING, AND A 4"x4" GLUE COUPLING.	2	EA
3	365	102.9/108.2	102.9/108.2 - 2" PRESSURE SEWER PIPE (100 PSI "PURE CORE" POLY ETHYLENE). INCLUDES TYPE A BEDDING AND HAUNCHING MATERIAL AND BACKFILL OF TRENCH WITH NATIVE MATERIALS MEETING 103.16 EARTH BACKFILL MATERIAL.	440	LF
4	366	102/103/104	102/103/104 - 2" END-OF-SERVICE CAP. MARK THE END OF SERVICE WITH A 4"x4" WOOD POST BURIED WITH 3 FEET ABOVE GRADE PAINTED GREEN.	2	EA
5	1	202	202 - REMOVAL OF ASPHALT MAT. CUT AND REMOVE ASPHALT AS SHOWN.	5	SY
6	663	304	304 - AGGREGATE BASE COURSE (CLASS 6) (6" THICK)	5	SY
7	672	304	304 - 6" CLASS 6 ABC FOR ROAD SURFACE COURSE. COMPACT TO 95% AASHTO T-180. PAID PER SY	135	SY
8	676	401.08	401.08 - HOT BITUMINOUS PAVEMENT (3" THICK) (GRADING SX, BINDER GRADE PG 64-22) (TWO 1 1/2" LIFTS)	5	SY
9	0	620	SANITARY FACILITY	1	LS
10	0	625	CONSTRUCTION SURVEYING	1	LS
11	0	626	MOBILIZATION	1	LS

REVISION Δ _____	DESCRIPTION _____	DATE _____	DRAWN BY _____	DATE _____
REVISION Δ _____	DESIGNED BY _____	DATE _____	CHECKED BY _____	DATE _____
REVISION Δ _____	APPROVED BY _____	DATE _____		

SCALE
N.T.S.



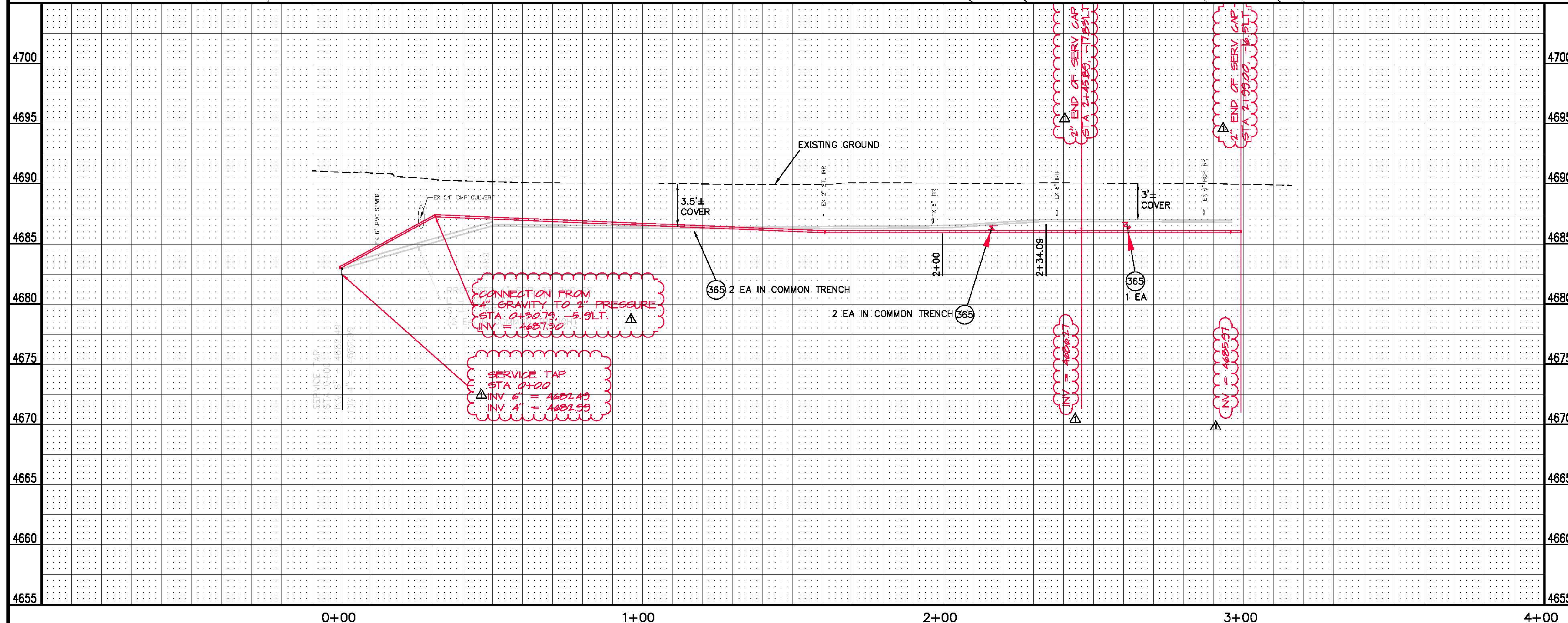
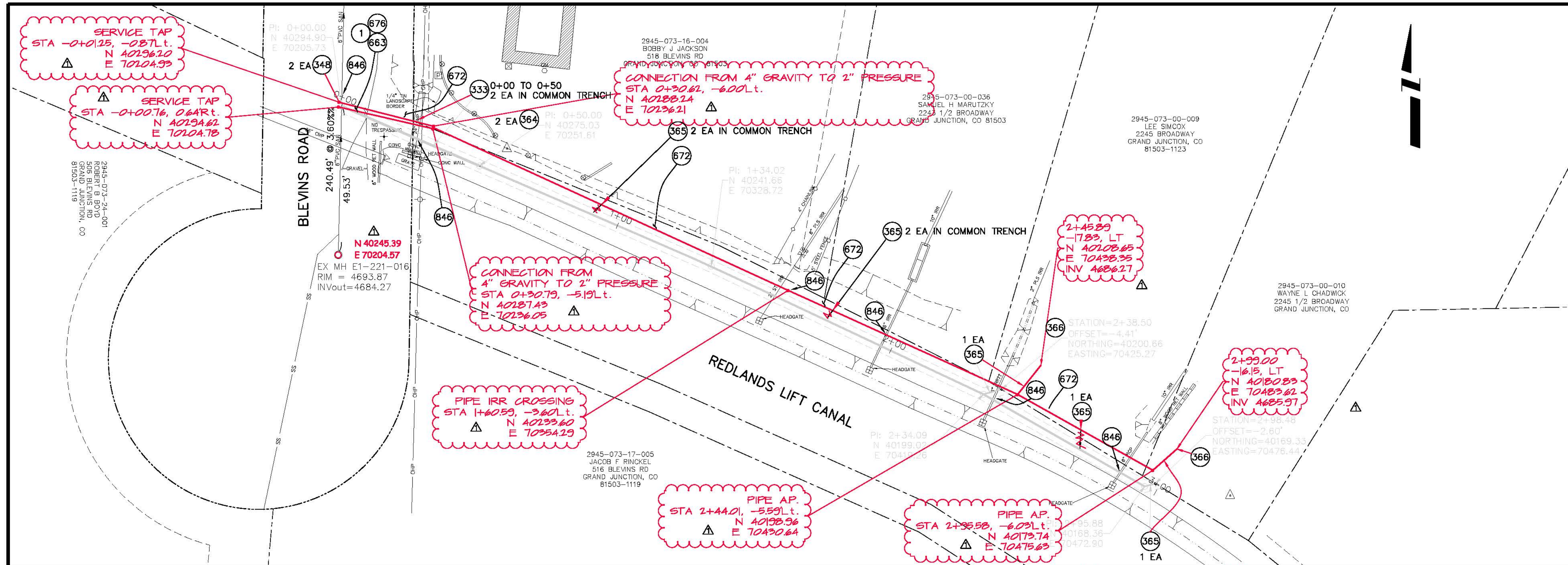
PUBLIC WORKS
AND UTILITIES
ENGINEERING DIVISION

Sewer Services for 2245 Broadway
2245 1/2 Broadway
SUMMARY OF APPROXIMATE QUANTITIES

CONSTRUCTION NOTES

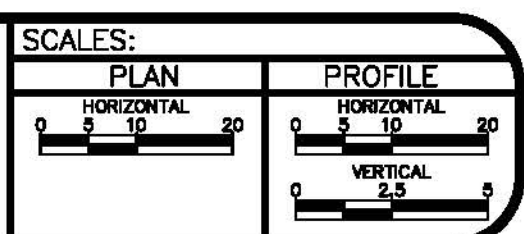
- ① 202 - REMOVAL OF ASPHALT MAT. CUT AND REMOVE ASPHALT AS SHOWN.
- ③③③ 102.9/108.2 - 4" SEWER SERVICE PIPE (SDR 35 PVC). INCLUDES TYPE A BEDDING AND HAUNCHING MATERIAL AND BACKFILL OF TRENCH WITH NATIVE MATERIALS MEETING 103.16 EARTH BACKFILL MATERIAL.
- ⑤48 102.9/108.3 - 6" x 4" SEWER SERVICE TAP. FULL BODY WYE (SEE STD. DETAIL SS-06).
- ⑤64 102.9/108.2 - CONNECTION FROM 4" SDR-35 PVC GRAVITY PIPE TO 2" 100 PSI PURE CORE PRESSURE SEWER PIPE TO BE ACCOMPLISHED USING A COMPRESSION BY FEMALE BRASS ADAPTOR, SCHEDULE 80 TOE NIPPLE, 4"x2" BUSHING, AND A 4"x4" GLUE COUPLING.
- ⑤65 102.9/108.2 - 2" PRESSURE SEWER PIPE (100 PSI "PURE CORE" POLY ETHYLENE). INCLUDES TYPE A BEDDING AND HAUNCHING MATERIAL AND BACKFILL OF TRENCH WITH NATIVE MATERIALS MEETING 103.16 EARTH BACKFILL MATERIAL.
- ⑤66 102/103/104 - 2" END-OF-SERVICE CAP. MARK THE END OF SERVICE WITH A 4"x4" WOOD POST BURIED WITH 3 FEET ABOVE GRADE PAINTED GREEN.
- ⑤63 304 - AGGREGATE BASE COURSE (CLASS 6) (6" THICK)
- ⑤72 304 - 6" CLASS 6 ABC FOR ROAD SURFACE COURSE. COMPACT TO 95% AASHTO T-180. PAID PER SY
- ⑤76 401.08 - HOT BITUMINOUS PAVEMENT (3" THICK) (GRADING SX, BINDER GRADE PG 64-22) (TWO 1 1/2" LIFTS)
- ⑤46 POT HOLE EXISTING UTILITY AHEAD OF CONSTRUCTION. NOTIFY PROJECT ENGINEER OF ANY DISCREPANCIES BETWEEN CONSTRUCTION DRAWINGS AND FIELD FINDINGS THAT WILL AFFECT SEWER ALIGNMENT AND/OR GRADE.

AS BUILT
9/2010



REVISION	DESCRIPTION	DATE
AS BUILT		9/2010

DRAWN BY	ics	DATE	2008
DESIGNED BY		DATE	
CHECKED BY		DATE	
APPROVED BY		DATE	



**PUBLIC WORKS
AND UTILITIES
ENGINEERING DIVISION**

**Sewer Services for
2245 Broadway and
2245 1/2 Broadway**

N:\LandProj\F48215 (SS 2245 BROADWAY)\DWG\ss for 2245 BROADWAY AS BUILT ss for 2245 BROADWAY.dwg, 4, 9/7/2010 12:44:21 PM