



Purchasing Division

## ADDENDUM NO. 1

**DATE:** April 17, 2019  
**FROM:** City of Grand Junction Purchasing Division  
**TO:** All Offerors  
**RE:** 2019 7<sup>th</sup> Street Reconstruction – Orchard Ave. to Patterson Ave. IFB-4627-19-DH

Offerors responding to the above referenced solicitation are hereby instructed that the requirements have been clarified, modified, superseded and supplemented as to this date as hereinafter described.

Please make note of the following clarifications:

1. Q. Would the City please supply the 2018 Bid Tab for the “7th Street North Avenue to Orchard Project”? Your Website only gives bid totals for that project, doesn’t supply the tabs.

A. The 2018 7<sup>th</sup> Street Reconstruction – North Ave. to Orchard Ave. IFB-4513-18-DH bid tabulation has been updated on the City’s website to include the engineer’s bid tab.

2. Q. Project Special Provision 3.3.21 states that the Contractor shall use a Material Transfer Vehicle. This is further defined in Special Provision 401.10 which describes the difference between a Material Transfer Vehicle and a Material Transfer Device. Is it the City’s intent to utilize a “Shuttle Buggy” type of Material Transfer Vehicle or a Windrow Elevator that attaches to the paver (Material Transfer Device)?

A. Either a material transfer vehicle (shuttle buggy) or a material transfer device (elevator) will be acceptable, provided that the primary functions of re-mixing and segregation reduction are achieved.

3. Q. Will Temporary striping be required for traffic control?

A. Temporary striping will not be required; however, traffic control plans will be reviewed by the City with regard to safe access through the corridor for pedestrians, bikers, vehicles, etc. It should be noted that during the Phase I reconstruction, temporary striping was utilized successfully.

4. Q. Is there a designated lay-down area?

A. There is not a designated lay-down area, however the contractor can utilize ROW within the reconstruction area for lay-down.

5. Q. Can the contractors begin work prior to 8am?

A. Extended work hours may be possible with approval from the engineer and surrounding businesses/residents.

6. Q. See updated attached Price Bid Schedule. Contractor shall utilize this updated Price Bid Schedule when submitting their bid responses.

7. **Additional Specifications:**

**SP-12 Section 202 – Removal of Obstructions and Structures**

Section 202 of the Standard Specifications is hereby revised for this project as follows:

Add the following:

*Abandon Manhole*

Remove the manhole ring and cover, and flared cone section. Plug the pipes entering/exiting the manhole and flow-fill the base and risers to the top of the riser sections. Class 6 ABC should be properly placed to compensate for any grade difference.

**Basis of Payment**

<u>Pay Item</u>	<u>Pay Unit</u>
Abandon Manhole	Each

**Additional Considerations:**

- Manholes to be abandoned should be assumed to be 48-inch diameter and 15-feet in depth.

See updated bid schedule and plan set.

The original solicitation for the project noted above is amended as noted.

All other conditions of subject remain the same.

Respectfully,



Duane Hoff Jr., Senior Buyer  
City of Grand Junction, Colorado

**Bid Schedule: Addendum #1 - 2019 7th Street Reconstruction Phase II - Orchard Ave. to Patterson Road**

**Contractor:** \_\_\_\_\_

Item No.	CDOT, City Ref.	Description	Quantity	Units	Unit Price	Total Price
1	108.2	12" Storm Drain Pipe (SDR 35 or approved equal)	20.	LF	\$ _____	\$ _____
2	108.2	18" Storm Drain Pipe (SDR 35 or approved equal)	435.	LF	\$ _____	\$ _____
3	108.5	Storm Sewer Basic Manhole (48" I.D.)	2.	EA	\$ _____	\$ _____
4	108.6	Single Storm Drain Inlet (Vertical Curb)	1.	EA	\$ _____	\$ _____
5	202	Asphalt Removal (Planing)(Thickness Varies - Maximum 12")	18,240.	SY	\$ _____	\$ _____
6	202	Removal of Manhole	1.	EA	\$ _____	\$ _____
7	202	Removal of Inlet	3.	EA	\$ _____	\$ _____
8	202	Removal of Storm Sewer Pipe	425.	LF	\$ _____	\$ _____
9	202	Removal of Traffic Pole Bases	3.	EA	\$ _____	\$ _____
10	202	Removal of Trees (2 EA) and Bushes (12 EA)	Lump Sum		---	\$ _____
11	202	Abandon Manhole	2.	EA	\$ _____	\$ _____
12	203	Excavation and Embankment (Potholing) (See SP-6)	Lump Sum		---	\$ _____
13	203	Excavation and Embankment (Unclassified Excavation)	7,847.	CY	\$ _____	\$ _____
14	203	Disposal of Radioactive Material (Dispose at City Shops, 333 West Ave.)	200.	CY	\$ _____	\$ _____
15	208	Erosion Control (Complete-In-Place)	Lump Sum		---	\$ _____
16	209	Dust Abatement	70.	Days	\$ _____	\$ _____
17	210	Adjust Valve Box (water)	20.	EA	\$ _____	\$ _____
18	210	Adjust Valve Box (Reference and Reset Survey Monuments)	3.	EA	\$ _____	\$ _____
19	210	Adjust Manhole Ring and Cover (Sanitary and Storm Sewer)	15.	EA	\$ _____	\$ _____
20	210	Adjust Manhole Ring and Cover (Others)	2.	EA	\$ _____	\$ _____
21	304	Aggregate Base Course (Class 6) - 15" Pavement Section	9,999.	Tons	\$ _____	\$ _____
22	304	Aggregate Base Course (Class 3) - 18" Subgrade Stabilization	4,000.	Tons	\$ _____	\$ _____
23	306	Reconditioning (12")	12,030.	SY	\$ _____	\$ _____
24	401	Hot Mix Asphalt (5" thick) (Grading SX, Binder Grade 64-22)	3,351.	Tons	\$ _____	\$ _____
25	401	Hot Mix Asphalt (2" thick) (Grading SX, Binder Grade 76-28)	2,036.	Tons	\$ _____	\$ _____
26	420	Geosynthetics - Mirafi RS580i or equivalent	11,730.	SY	\$ _____	\$ _____

**Bid Schedule: Addendum #1 - 2019 7th Street Reconstruction Phase II - Orchard Ave. to Patterson Road**

**Contractor:** \_\_\_\_\_

Item No.	CDOT, City Ref.	Description	Quantity	Units	Unit Price	Total Price
27	608/304	Concrete Curb and Gutter (2' Wide) To Include 6" of Class 6 Aggregate Base Course	80.	LF	\$ _____	\$ _____
28	608/304	Concrete Sidewalk (4" Thick) to Include 6" of Class 6 Aggregate Base Course	260.	SY	\$ _____	\$ _____
29	608/304	Concrete Curb Ramp to include 6" of	431.	SY	\$ _____	\$ _____
30	608	Detectable Warning (Wet Set)(Cast Iron)(2'x4')	144.	SF	\$ _____	\$ _____
31	608/304	Concrete Driveway Section (6"Thick) to Include 6" of Class 6 Aggregate Base Course	212.	SY	\$ _____	\$ _____
32	620	Sanitary Facility		Lump Sum	---	\$ _____
33	625	Construction Surveying		Lump Sum	---	\$ _____
34	626	Mobilization		Lump Sum	---	\$ _____
35	627- 30405	Preformed Thermoplastic Pavement Marking (Word/Symbol)	408.	SF	\$ _____	\$ _____
36	627- 30410	Preformed Thermoplastic Pavement Marking (X-Walk/Stopline)	1,940.	SF		
37	630	Traffic Control (Complete In Place)		Lump Sum		
38	630	Flagging	1,920.	HR		
39	630	Traffic Control Plan		Lump Sum		
INC		Incentive HMA 64-22	---	---	---	\$ 12,000.00
INC		Incentive HMA 76-28	---	---	---	\$ 10,000.00
MCR		Minor Contract Revisions	---	---	---	\$ 100,000.00

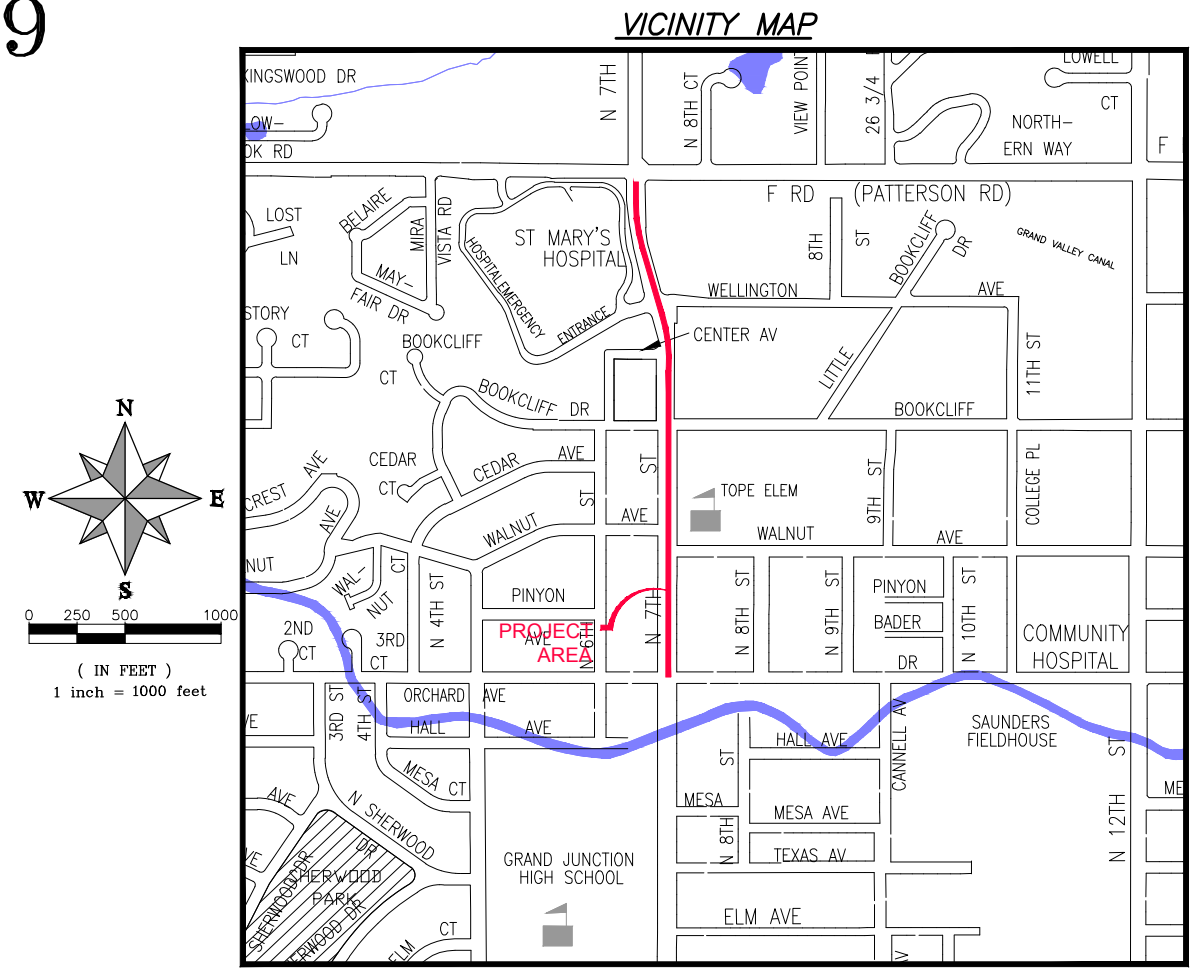
**Bid Amount:** \$ \_\_\_\_\_

**Bid Amount:**

**dollars**

# 7TH STREET RECONSTRUCTION PHASE II ORCHARD AVENUE TO PATTERSON ROAD MARCH, 2019

- 1 ——— Cover Sheet
- 2 ——— Standard Abbreviations, Legend, and Symbols
- 3 ——— Summary of Approximate Quantities
- 4 ——— Plan View Sta 0+00 – Sta 15+00
- 5 ——— Plan View Sta 15+00 – Sta 28+00
- 6 ——— Section Views Sta 0+50 – Sta 7+50
- 7 ——— Section Views Sta 8+00 – Sta 15+00
- 8 ——— Section Views Sta 15+50 – Sta 22+50
- 9 ——— Section Views Sta 23+00 – Sta 27+00 & Typical Section Detail
- 10 ——— Storm Plan and Profile
- 11 ——— Storm Sewer Details
- A1 ——— Demo Plan
- A2–A3 ——— Utility Plan



UTILITIES AND AGENCIES								
AGENCY	NAME	POSITION	ROLE	MAILING ADDRESS	STREET ADDRESS	CITY, STATE	VOICE-WK	FAX
CITY OF GRAND JUNCTION	ERIC MOCKO	PROJECT ENGINEER	PROJECT ENGINEER	333 WEST AVE BLDG C	333 WEST AVE BLDG C	GRAND JCT., CO 81501	(970) 256-4017	(970) 256-4022
CITY OF GRAND JUNCTION	LEE COOPER	PROJECT ENGINEER	SANITARY SEWER	333 WEST AVE BLDG C	333 WEST AVE BLDG C	GRAND JCT., CO 81501	(970) 256-4155	(970) 256-4022
GRAND VALLEY IRRIGATION CO.	PHIL BERTRAND	MANAGER	IRRIGATION	688 26 RD	688 26 RD	GRAND JCT., CO 81506	(970) 242-2762	
SPECTRUM	JEFF VALDEZ	MANAGER	CABLE TV	2502 FORESIGHT CIRCLE	2502 FORESIGHT CIRCLE	GRAND JCT., CO 81504	(970) 245-8750	(970) 245-6803
CENTURYLINK	CHRIS JOHNSON	ENGINEER	TELEPHONE	2524 BLICHMANN AVE	2524 BLICHMANN AVE	GRAND JCT., CO 81504	(970) 244-4311	(970) 240-4349
XCEL	STEVE PIBURN	UNIT MANAGER	ELECTRIC	2538 BLICHMANN AVE	2538 BLICHMANN AVE	GRAND JCT., CO 81506	(970) 244-2664	(970) 244-2664
XCEL	SARAH BARRICAU	UNIT MANAGER	GAS	2538 BLICHMANN AVE	2538 BLICHMANN AVE	GRAND JCT., CO 81506	(970) 244-2656	(970) 244-2656

DRAWING STATUS:	
●	PROGRESS
○	FINAL CONSTRUCTION DRAWINGS
○	ASBUILT
DESIGNED BY:	
2019	
REVIEWED BY:	
TRENT C. PRALL, PUBLIC WORKS DIRECTOR 2019	
AUTHORIZED FOR CONSTRUCTION	
TRENT C. PRALL, PUBLIC WORKS DIRECTOR 2019	
ACCEPTED AS CONSTRUCTED	
ERIC MOCKO 2019	

  
**Public Works**  
*Engineering Division*



N:\Landproj\2019 7th Street Reconstruction Phase II.dwg 7th St-Phase II.dwg 01\_4/15/2019 4:19:38 PM

7TH STREET RECONSTRUCTION PHASE II ORCHARD AVENUE TO PATTERSON ROAD, MARCH, 2019

NOTE: NOTIFY AFFECTED UTILITY VENDOR 48 HOURS PRIOR TO EXCAVATIONS THAT WILL EXPOSE UTILITY LINES. THE COVER SHEET WILL HAVE A LISTING OF UTILITY VENDORS AND TELEPHONE NUMBERS.

REVISION	DESCRIPTION	DATE
REVISION Δ	Addition of Demo & Utility Sheets	04/15/19
REVISION Δ		
REVISION Δ		
REVISION Δ		

**ABBREVIATIONS**

AASHTO	AMERICAN ASSOCIATION OF STATE HIGHWAY & TRANSPORTATION OFFICIALS
ABC	AGGREGATE BASE COURSE
AC	ASBESTOS CEMENT
AP	ANGLE POINT
ASB	ANCHORED STRAW BALES
ASB	ALUMINIZED STEEL PIPE
ASTM	AMERICAN SOCIETY FOR TESTING MATERIALS
AWWA	AMERICAN WATER WORKS ASSOCIATION
BC	BACK OF CURB
BF	BUTTERFLY VALVE
BOW	BACK OF WALK
BCR	BEGIN CURB RETURN
BOT	BOTTOM
BSWMP	BETTER STORM WATER MANAGEMENT PRACTICES
CH	CHORD
CAP	CORRUGATED ALUMINUM PIPE
CDOT	COLORADO DEPARTMENT OF TRANSPORTATION
CI	CAST IRON
C,G,& SW	CURB, GUTTER & SIDEWALK
C	CENTER LINE
CL	CLEAR
CMP	CORRUGATED METAL PIPE
CO	CLEAN OUT
COMB	COMBINATION (AS IN STORM SEWER AND SANITARY SEWER)
CONC	CONCRETE
CSM	CITY SURVEY MONUMENT
CSP	CORRUGATED STEEL PIPE
CU	COPPER
DI	DUCTILE IRON
DWY	DRIVEWAY
E	ELECTRIC
ECR	END CURB RETURN
EG	EDGE OF GUTTER
EL	ELEVATION
EP	EDGE OF PAVEMENT
EX	EXISTING
FB	FULL BODY
FC	FACE OF CURB
FG	FINISHED GRADE
F	FLOW LINE
FL	FLANGE
FM	FORCE MAIN
FO	FIBER OPTICS
FS	FAR SIDE
FTG	FOOTING
G	GAS
GB	GRADE BREAK
GM	GAS METER
GV	GATE VALVE
HBP	HOT BITUMINOUS PAVEMENT
HDPE	HIGH DENSITY POLYETHYLENE
INV	INVERT
IRR	IRRIGATION
L	LENGTH OF ARC
LC	LONG CHORD
LF	LINEAR FEET
LL	LONG ARC
LS	SHORT ARC
LT	LEFT
MB	MAILBOX
MCSM	MESA COUNTY SURVEY MONUMENT
MH	MANHOLE
MJ	MECHANICAL JOINT
MW	MILL WRAP
N/A	NOT APPLICABLE
NIC	NOT IN CONTRACT
NOP	NO ONE PERSON
NRCP	NON-REINFORCED CONCRETE PIPE
NS	NEAR SIDE
NTS	NOT TO SCALE
OHP	OVERHEAD POWER
OHT	OVERHEAD TELEPHONE
OC	POINT OF CURVATURE
PCC	POINT OF COMPOUND CURVATURE
PE	POLYETHYLENE
PERF	PERFORATED
PI	POINT OF INTERSECTION
PIP	PLASTIC IRRIGATION PIPE
POC	POINT ON CURVE
POT	POINT ON TANGENT
PR	PROPOSED
PRC	POINT OF REVERSE CURVATURE
PT	POINT OF TANGENCY
PVC	POLYVINYL CHLORIDE
R	RADIUS
RCP	REINFORCED CONCRETE PIPE
REQ'D	REQUIRED
RG	RESTRAINED GLANDS
RL	LONG RADIUS
ROW	RIGHT OF WAY
RP	RADIUS POINT
RR	RAIL ROAD
RS	SHORT RADIUS
RT	RIGHT
S	SLOPE
SAN	SANITARY
SC	SHORT CHORD
SCD	STANDARD CONTRACT DOCUMENTS
SCH	SCHEDULE
SF	SILT FENCE
SL	SECTION LINE
SSRB	STANDARD SPECIFICATIONS FOR ROAD & BRIDGE CONSTRUCTION
SSUU	STANDARD SPECIFICATIONS FOR CONSTRUCTION OF UNDERGROUND UTILITIES
STA	STATION
STL	STEEL
STM	STORM
T	TELEPHONE
TAN	LENGTH OF TANGENT
TC	TOP OF CURB
TH	TEST HOLE
TV	TELEVISION
(TYP)	TYPICAL
UU	UNDERGROUND UTILITIES
VC	VERTICAL CURVE
VCP	VITRIFIED CLAY PIPE
VPC	VERTICAL POINT OF CURVATURE
VPCC	VERTICAL POINT OF COMPOUND CURVATURE
VPRC	VERTICAL POINT OF REVERSE CURVATURE
VPI	VERTICAL POINT OF INTERSECTION
VPT	VERTICAL POINT OF TANGENCY
W	WATER
Δ	DELTA ANGLE

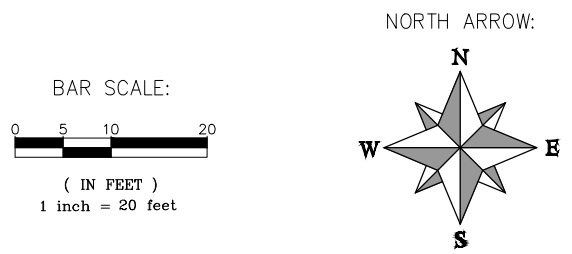
**LEGEND**

BSWMP	BSWMP
DRAINAGE BASIN BOUNDARY	— — — — —
BSWMP	BSWMP
ANCHORED STRAW BALES	ASB ASB ASB ASB ASB ASB ASB ASB
BSWMP	BSWMP
SILT FENCE	SF SF SF SF SF SF SF SF
BUILDING	
CONCRETE CURB AND GUTTER	2' CURB AND GUTTER
CONCRETE CURB, GUTTER, & SIDEWALK	7' C, G, & SW
CONCRETE DITCH	CONCRETE
CONCRETE SIDEWALK	4' SW
CULVERT	18" RCP
EARTH DITCH	EARTH . . . EARTH . . . EARTH . . .
EDGE OF GRAVEL	---
EDGE OF PAVEMENT	---
FENCE (BARBED WIRE)	— x — x — x — x —
FENCE (CHAIN LINK)	— x — x — x — x —
FENCE (IRON)	— x — x — x — x —
FENCE (PLASTIC)	— x — x — x — x —
FENCE (TEMPORARY CONSTRUCTION)	— x — x — x — x —
FENCE (WOOD)	— x — x — x — x —
FENCE (WOVEN WIRE)	— x — x — x — x —
GUARD RAIL	— 9' — 9' — 9' — 9' —
HATCHING: INDICATES ASPHALT REMOVAL	
HATCHING: INDICATES CONCRETE REMOVAL	
HATCHING: INDICATES STAGING AREA	
LINE (CENTER OF IMPROVEMENTS)	— CENTERLINE —
LINE (CITY LIMITS)	— CITY LIMITS —
LINE (CONTROL)	— CONTROL LINE —
LINE (EASEMENT)	— — — — —
LINE (MONUMENT/SECTION)	— MONUMENT/SECTION LINE —
LINE (PROPERTY)	— — — — —
LINE (RIGHT OF WAY)	— — — — —
MATCH LINE	MATCH LINE SEE SHEET NO ?
PIPE (IRRIGATION)	— 4" IRR —
PIPE (SIPHON)	— 4" SIPHON —

PROPOSED CONCRETE CURB AND GUTTER	=====
PROPOSED CONCRETE CURB, GUTTER, & SIDEWALK	=====
PROPOSED CONCRETE SIDEWALK	=====
PROPOSED "WET" UTILITIES (CONSTRUCTION NOTE WILL INDICATE TYPE, SIZE, AND MATERIAL OF NEW MAIN)	8" PVC SANITARY SEWER
ALL PROPOSED FEATURES NOT SHOWN IN LEGEND WILL BE SHOWN THE SAME AS THEIR EXISTING COUNTERPART, BUT INDICATED BY BOLDER LINETYPE	
RAIL ROAD	
RETAINING WALL	1' RETAINING WALL
STRIPING (CONTINUOUS WHITE)	WHITE
STRIPING (DASHED WHITE)	WHITE
STRIPING (CONTINUOUS YELLOW)	YELLOW
STRIPING (DASHED YELLOW)	YELLOW
TOP OF SLOPE	4570
TOE OF SLOPE	4570
TRAFFIC DETECTOR LOOP	
UTILITY LINE (ABANDON) (THIS CASE A WATER LINE)	W (ABANDON) 8" W
UTILITY LINE (CABLE TV)	TV TV
UTILITY LINE (ELECTRIC)	E E
UTILITY LINE (FIBER OPTIC)	FO OPT-FO
UTILITY LINE (GAS)	G 1 1/4" MW G
UTILITY LINE (HIGH VOLTAGE OVERHEAD POWER)	HVHOP
UTILITY LINE (OVERHEAD POWER)	OHP
UTILITY LINE (OVERHEAD TELEPHONE)	OHT
UTILITY LINE (SANITARY SEWER)	8" SAN
UTILITY LINE (SANITARY SEWER FORCE MAIN)	8" FM
UTILITY LINE (SANITARY SEWER SERVICE)	SS SS
UTILITY LINE (STORM SEWER)	8" STM
UTILITY LINE (STORM SEWER, PERFORATED)	6" PERF
UTILITY LINE (STORM/SANITARY SEWER SEWER COMBINATION)	18" COMB
UTILITY LINE (TELEPHONE)	T T
UTILITY LINE (WATER)	W 8" W

**SYMBOLS**

BENCH MARK	
CATCH BASIN	
CLEAN OUT	
CURB STOP	
FIRE HYDRANT	
GUY WIRE ANCHOR	
HEADGATE	
IRRIGATION PUMP	
MAILBOX	
MANHOLE (ELECTRIC)	
MANHOLE (GAS)	
MANHOLE (SANITARY/STORM)	
MANHOLE (TELEPHONE)	
MANHOLE (WATER)	
METER (GAS)	
METER (WATER)	
PEDESTAL (TELEPHONE)	
PEDESTAL (TV)	
PROPERTY PIN	
PULL BOX	
REDUCER FITTING	
SIGN OR POST (SIGN TYPE NOTED)	
SPRINKLER HEAD	
STREET LIGHT	
SURVEY MONUMENT (CITY)	
SURVEY MONUMENT (TYPE NOTED)	
TEST HOLE	
TRAFFIC PAINT MARKING	
TRAFFIC SIGNAL POLE AND MAST ARM	
UTILITY POLE	
VALVE (GAS)	
VALVE (IRRIGATION)	
VALVE (WATER)	
VEGETATION (HEDGE OR BUSH)	
VEGETATION (TREE STUMP)	
VEGETATION (TREE) (CALIPER SIZE NOTED)	
WATER HYDRANT	
WEIR	
YARD LIGHT	



N:\Landproj\2019 7th Street Reconstruction Phase II.dwg 7th St Phase II.dwg, 02, 4/15/2019 4:19:40 PM

REVISION Δ	DESCRIPTION	DATE	DRAWN BY	DATE
REVISION Δ			DESIGNED BY	DATE
REVISION Δ			CHECKED BY	DATE
REVISION Δ			APPROVED BY JCS	DATE 4-02

SCALES: PLAN & PROFILE

HORIZONTAL: 1" =

VERTICAL: 1" =



**PUBLIC WORKS ENGINEERING DIVISION**

**CITY OF GRAND JUNCTION STANDARD ABBREVIATIONS, LEGEND, AND SYMBOLS**

**Bid Schedule: Addendum #1 - 2019 7th Street Reconstruction Phase II - Orchard Ave. to Patterson Road**

Contractor: \_\_\_\_\_

Item No.	CDOT, City Ref.	Description	Quantity	Units	Unit Price	Total Price
1	108.2	12" Storm Drain Pipe (SDR 35 or approved equal)	20.	LF	\$ _____	\$ _____
2	108.2	18" Storm Drain Pipe (SDR 35 or approved equal)	435.	LF	\$ _____	\$ _____
3	108.5	Storm Sewer Basic Manhole (48" I.D.)	2.	EA	\$ _____	\$ _____
4	108.6	Single Storm Drain Inlet (Vertical Curb)	1.	EA	\$ _____	\$ _____
5	202	Asphalt Removal (Planing)(Thickness Varies - Maximum 12")	18,240.	SY	\$ _____	\$ _____
6	202	Removal of Manhole	1.	EA	\$ _____	\$ _____
7	202	Removal of Inlet	3.	EA	\$ _____	\$ _____
8	202	Removal of Storm Sewer Pipe	425.	LF	\$ _____	\$ _____
9	202	Removal of Traffic Pole Bases	3.	EA	\$ _____	\$ _____
10	202	Removal of Trees (2 EA) and Bushes (12 EA)	Lump Sum		---	\$ _____
11	202	Abandon Manhole	2.	EA	\$ _____	\$ _____
12	203	Excavation and Embankment (Potholing) (See SP-6)	Lump Sum		---	\$ _____
13	203	Excavation and Embankment (Unclassified Excavation)	7,847.	CY	\$ _____	\$ _____
14	203	Disposal of Radioactive Material (Dispose at City Shops, 333 West Ave.)	200.	CY	\$ _____	\$ _____
15	208	Erosion Control (Complete-In-Place)	Lump Sum		---	\$ _____
16	209	Dust Abatement	70.	Days	\$ _____	\$ _____
17	210	Adjust Valve Box (water)	20.	EA	\$ _____	\$ _____
18	210	Adjust Valve Box (Reference and Reset Survey Monuments)	3.	EA	\$ _____	\$ _____
19	210	Adjust Manhole Ring and Cover (Sanitary and Storm Sewer)	15.	EA	\$ _____	\$ _____
20	210	Adjust Manhole Ring and Cover (Others)	2.	EA	\$ _____	\$ _____
21	304	Aggregate Base Course (Class 6) - 15" Pavement Section	9,999.	Tons	\$ _____	\$ _____
22	304	Aggregate Base Course (Class 3) - 18" Subgrade Stabilization	4,000.	Tons	\$ _____	\$ _____
23	306	Reconditioning (12")	12,030.	SY	\$ _____	\$ _____

24	401	Hot Mix Asphalt (5" thick) (Grading SX, Binder Grade 64-22)	3,351.	Tons	\$ _____	\$ _____
25	401	Hot Mix Asphalt (2" thick) (Grading SX, Binder Grade 76-28)	2,036.	Tons	\$ _____	\$ _____
26	420	Geosynthetics - Mirafi RS580i or equivalent	11,730.	SY	\$ _____	\$ _____
27	608/304	Concrete Curb and Gutter (2' Wide) To Include 6" of Class 6 Aggregate Base Course	80.	LF	\$ _____	\$ _____
28	608/304	Concrete Sidewalk (4" Thick) to Include 6" of Class 6 Aggregate Base Course	260.	SY	\$ _____	\$ _____
29	608/304	Concrete Curb Ramp to include 6" of	431.	SY	\$ _____	\$ _____
30	608	Detectable Warning (Wet Set)(Cast Iron)(2'x4')	144.	SF	\$ _____	\$ _____
31	608/304	Concrete Driveway Section (6"Thick) to Include 6" of Class 6 Aggregate Base Course	212.	SY	\$ _____	\$ _____
32	620	Sanitary Facility	Lump Sum		---	\$ _____
33	625	Construction Surveying	Lump Sum		---	\$ _____
34	626	Mobilization	Lump Sum		---	\$ _____
35	627-30405	Preformed Thermoplastic Pavement Marking (Word/Symbol)	408.	SF	\$ _____	\$ _____
36	627-30410	Preformed Thermoplastic Pavement Marking (X-Walk/Stopline)	1,940.	SF		
37	630	Traffic Control (Complete In Place)	Lump Sum			
38	630	Flagging	1,920.	HR		
39	630	Traffic Control Plan	Lump Sum			
INC		Incentive HMA 64-22	---	---	---	\$ 12,000.00
INC		Incentive HMA 76-28	---	---	---	\$ 10,000.00
MCR		Minor Contract Revisions	---	---	---	\$ 100,000.00

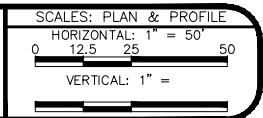
**Bid Amount:** \$ \_\_\_\_\_

**Bid Amount:** \_\_\_\_\_

dollars

N:\Landproj\2019 7th Street Reconstruction Phase II.dwg 7th St Phase II.dwg 03\_4/16/2019 4:03:11 PM

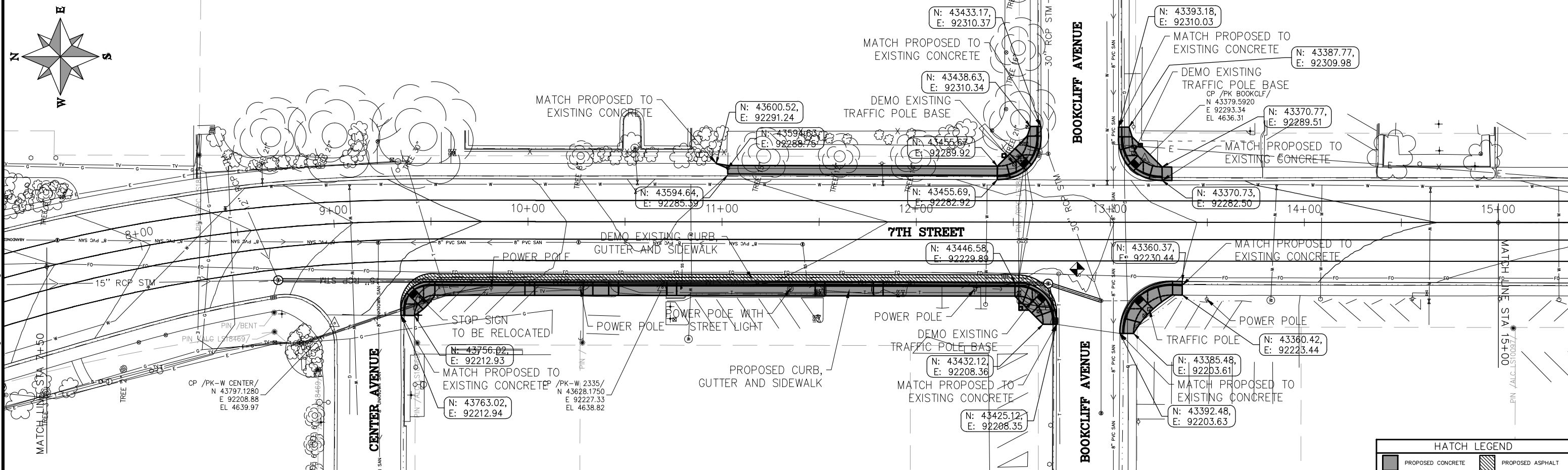
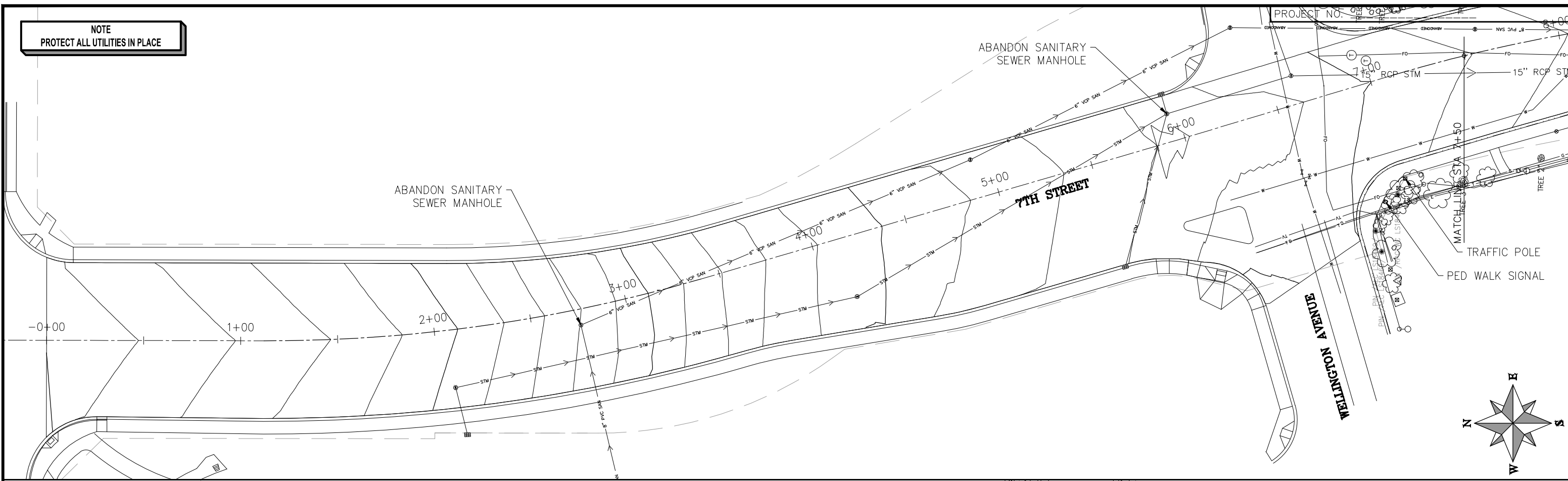
REVISION	DESCRIPTION	DATE	DRAWN BY	DATE	DESIGNED BY	DATE	CHECKED BY	DATE	APPROVED BY	DATE
REVISION	△									
REVISION	△									
REVISION	△									
REVISION	△									



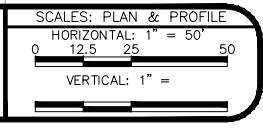
**PUBLIC WORKS ENGINEERING DIVISION**

**7TH STREET RECONSTRUCTION PHASE II - ORCHARD AVE TO PATTERSON RD SUMMARY OF APPROXIMATE QUANTITIES**

**NOTE**  
PROTECT ALL UTILITIES IN PLACE



REVISION	DESCRIPTION	DATE	DRAWN BY	DATE
1	Addition of Demo & Utility Sheets	04/15/19		
2				
3				
4				



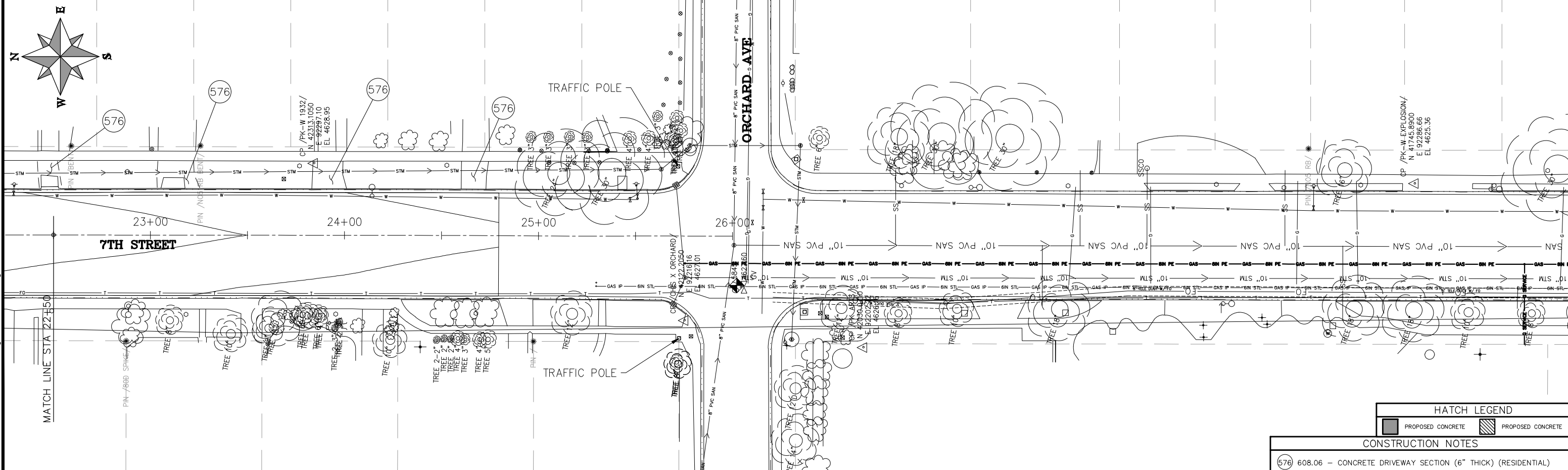
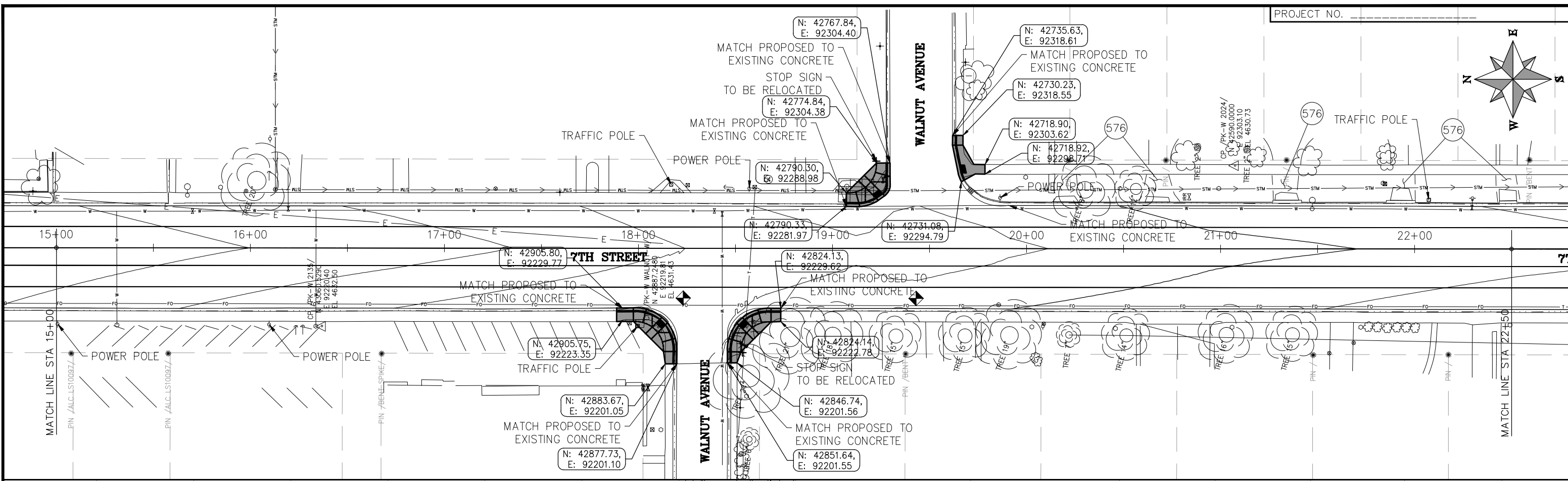
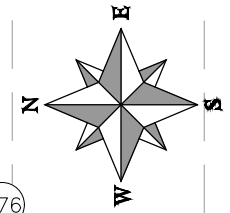
**PUBLIC WORKS  
ENGINEERING DIVISION**

**7TH STREET RECONSTRUCTION  
PHASE II - ORCHARD AVE TO PATTERSON RD  
STA 0+00 - STA 15+00**

N:\Landproj\2019 7th Street Reconstruction Phase II.dwg 7th St Phase II.dwg 04\_15\_19 4:19:47 PM







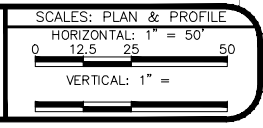
**HATCH LEGEND**

	PROPOSED CONCRETE
	PROPOSED CONCRETE

**CONSTRUCTION NOTES**

(576) 608.06 - CONCRETE DRIVEWAY SECTION (6" THICK) (RESIDENTIAL)

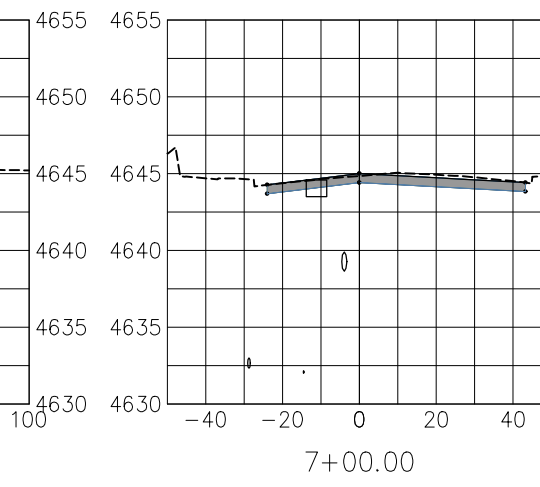
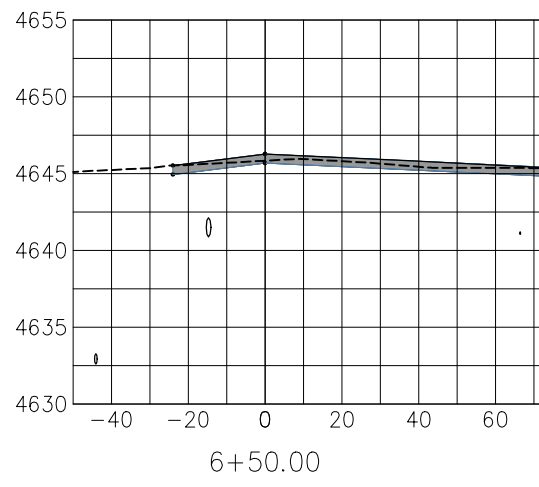
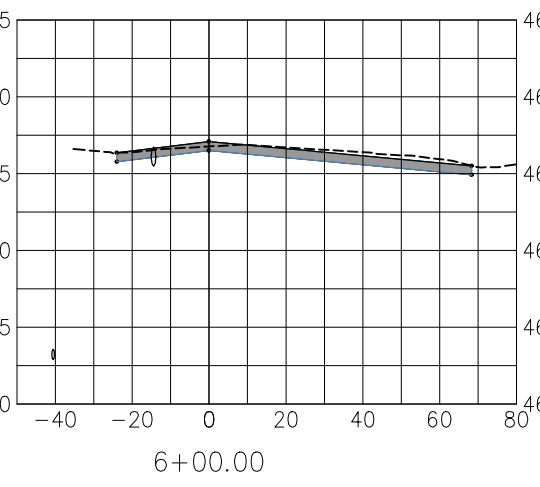
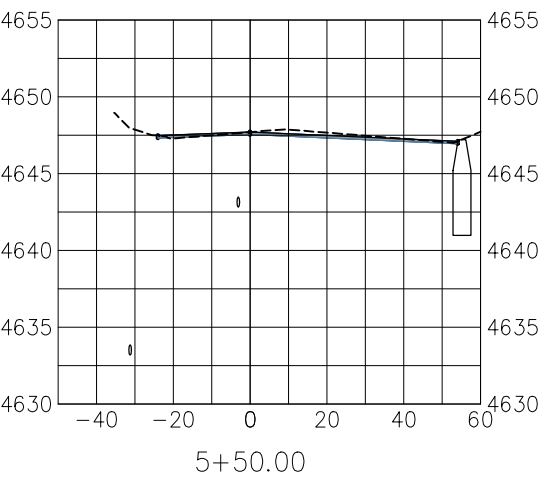
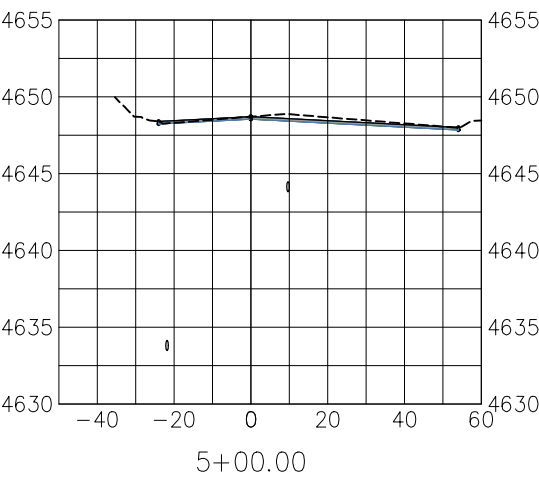
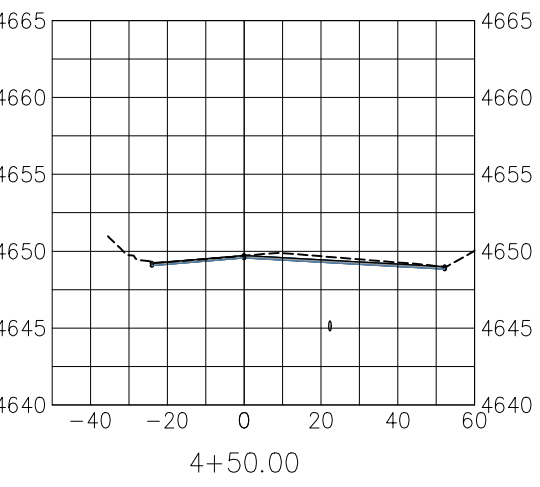
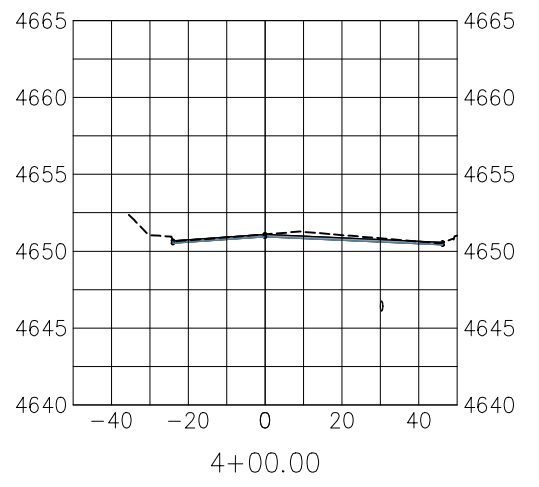
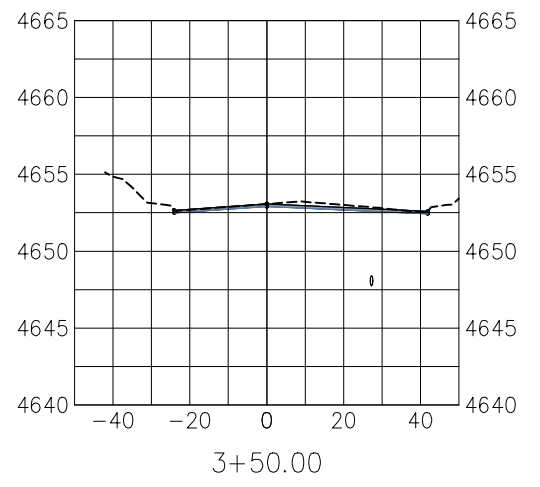
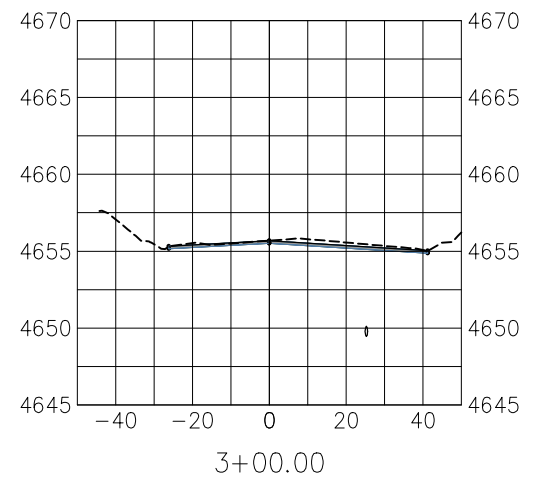
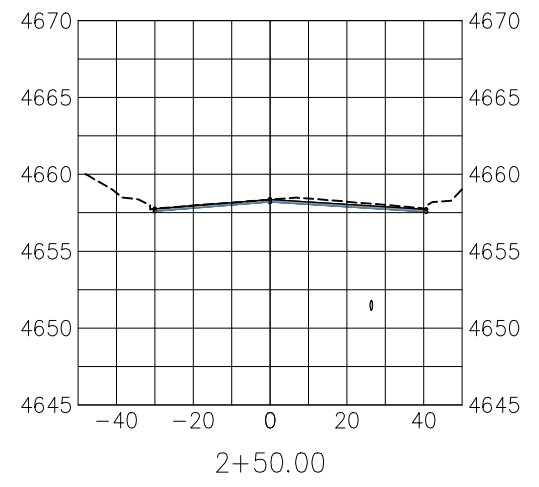
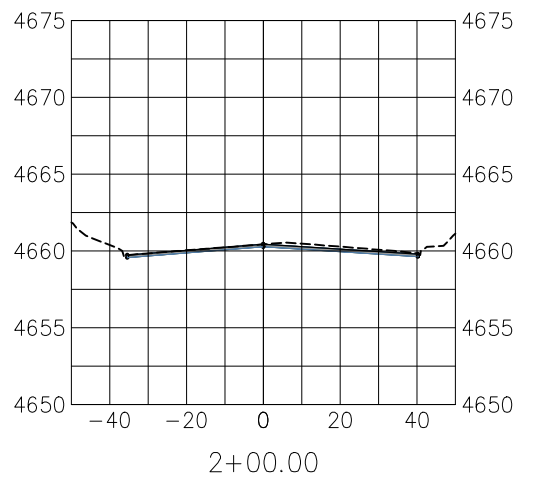
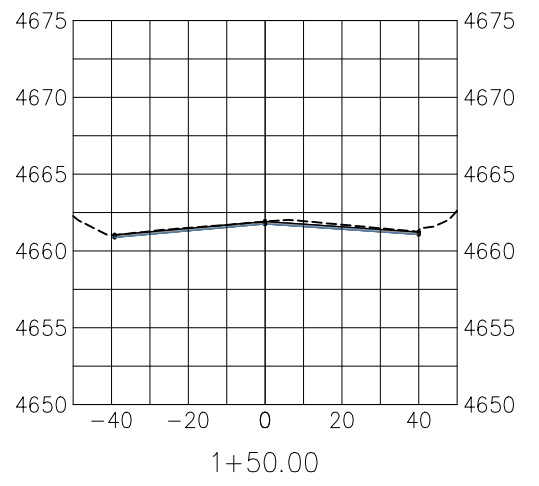
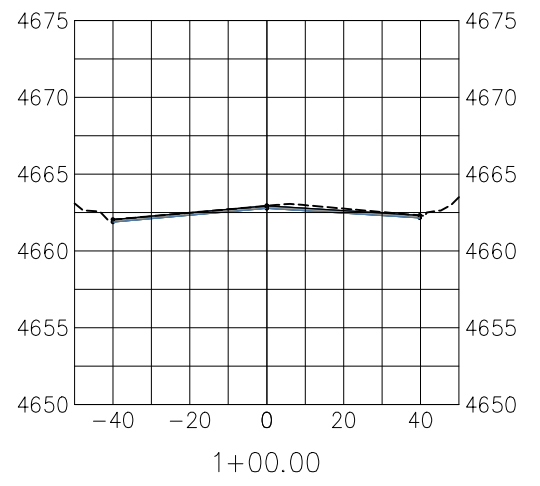
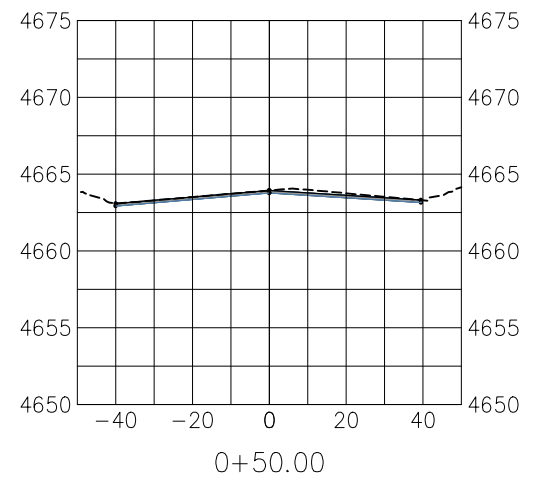
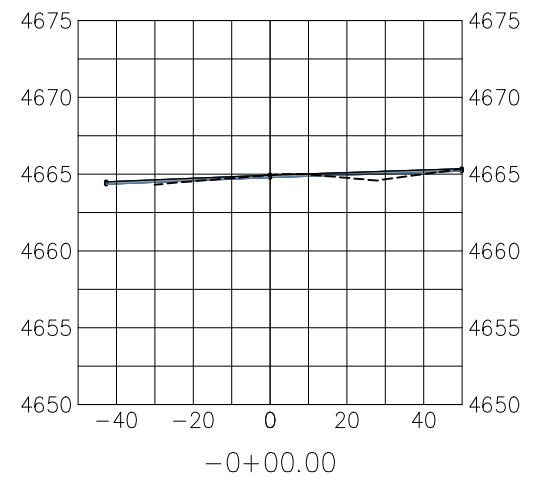
REVISION	DESCRIPTION	DATE	DRAWN BY	DATE
REVISION	△ Addition of Demo & Utility Sheets	04/15/19	DESIGNED BY	DATE
REVISION	△		CHECKED BY	DATE
REVISION	△		APPROVED BY	DATE



**PUBLIC WORKS  
ENGINEERING DIVISION**

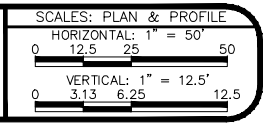
**7TH STREET RECONSTRUCTION  
PHASE II - ORCHARD AVE TO PATTERSON RD  
STA 0+00 - STA 26+00**

N:\Landproj\2019 7th Street Reconstruction Phase II.dwg 7th St Phase II.dwg\_05\_4/15/2019 4:20:01 PM



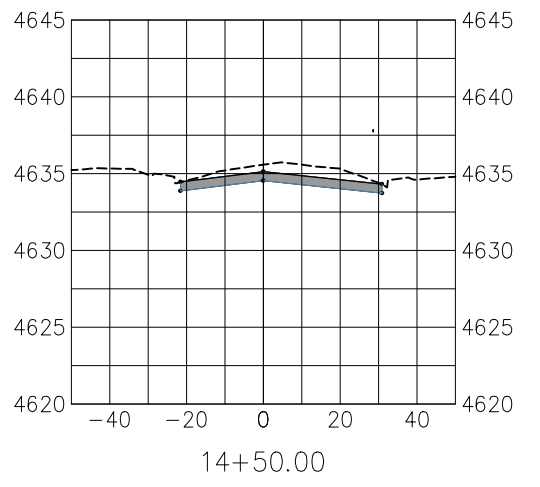
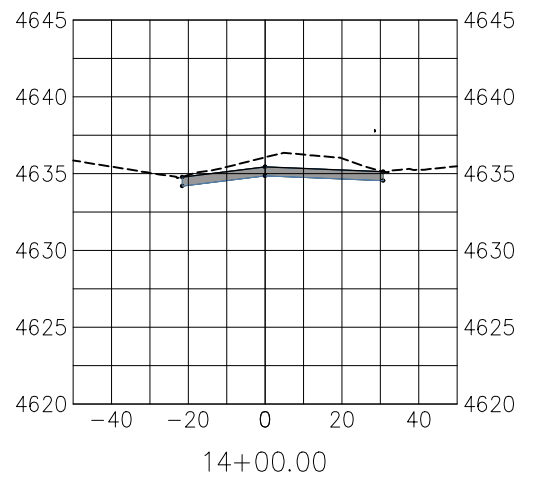
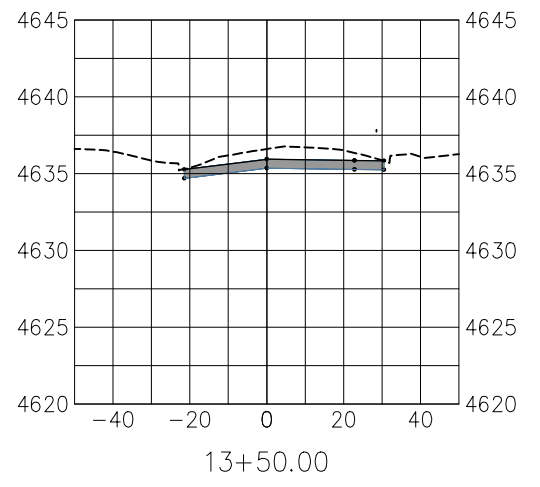
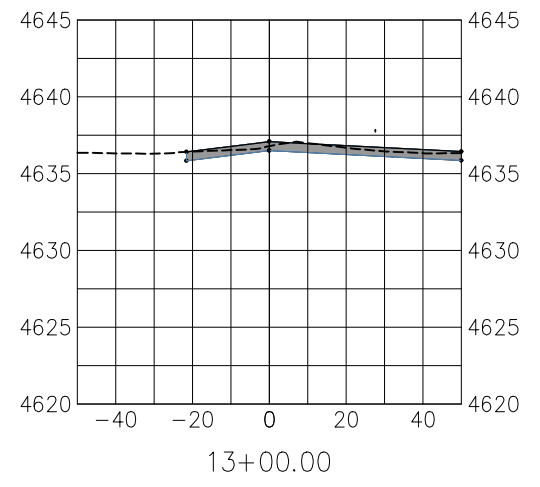
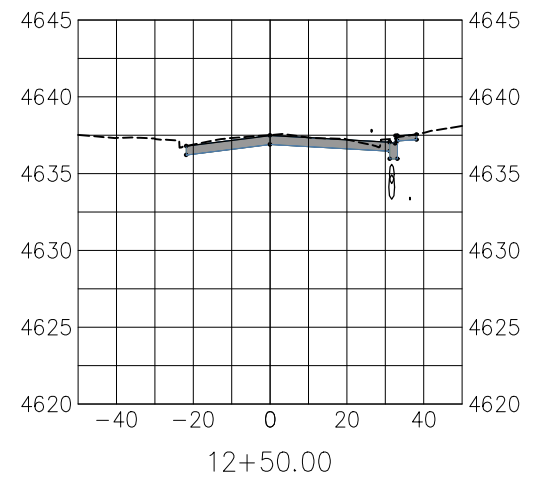
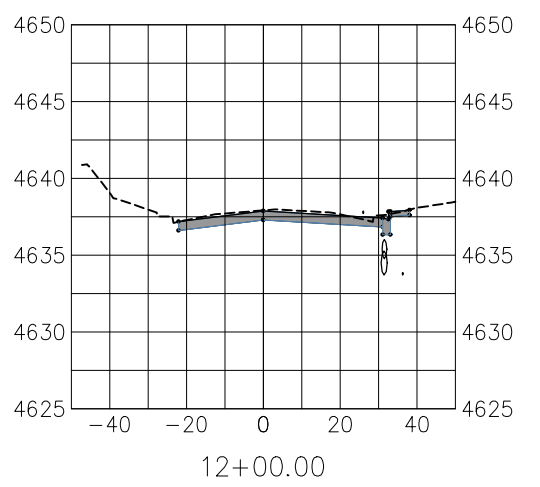
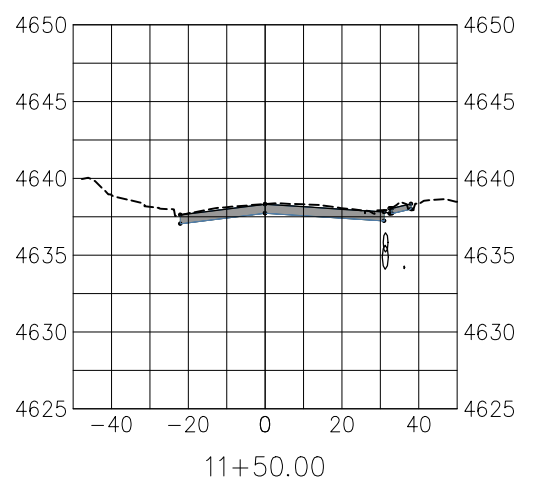
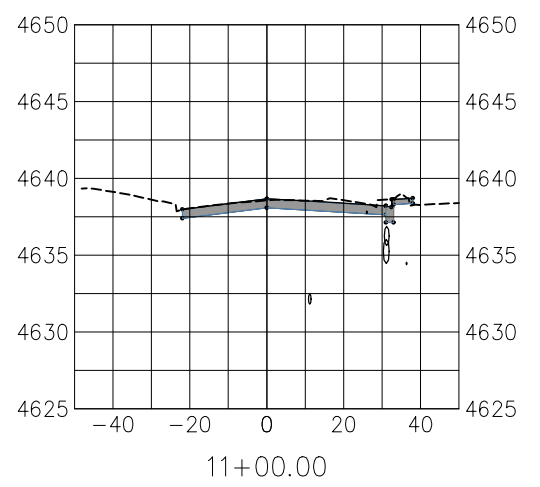
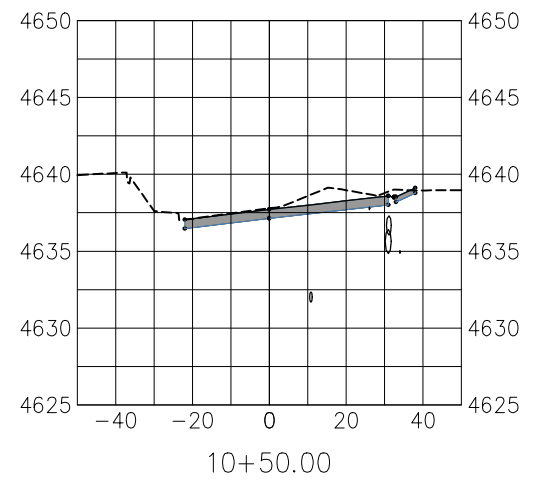
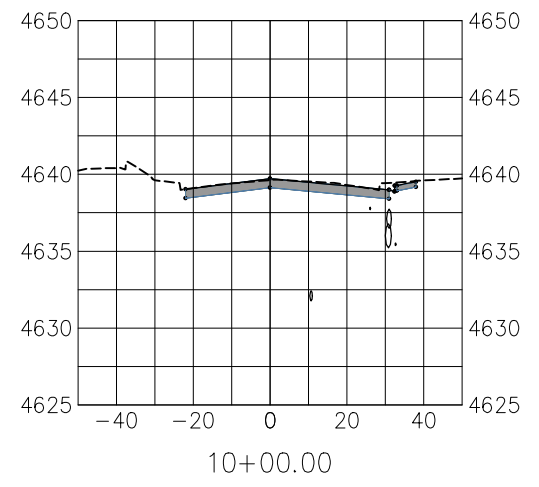
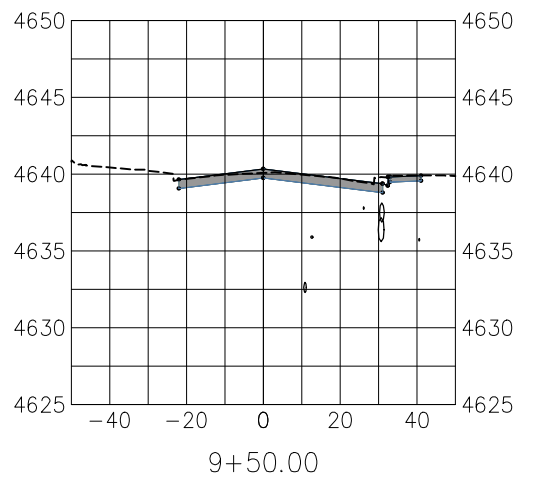
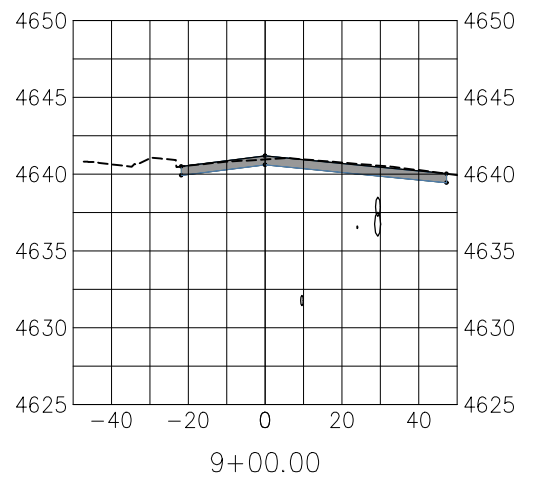
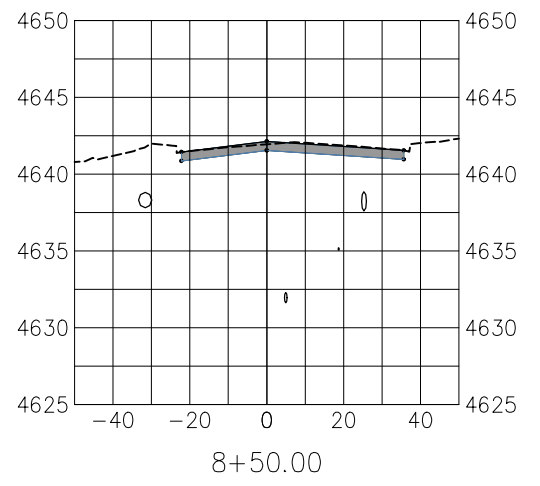
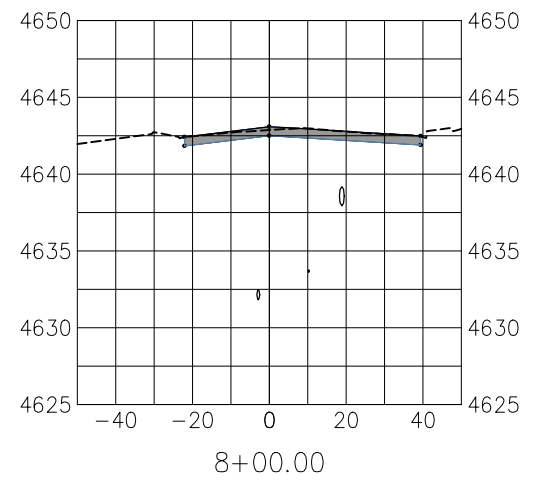
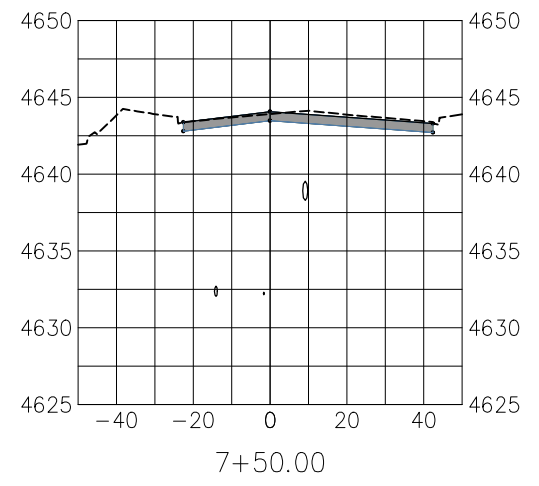
N:\Landproj\2019 7th Street Reconstruction Phase II.dwg 7th St Phase II.dwg 06\_4/15/2019 4:20:15 PM

REVISION	DESCRIPTION	DATE	DRAWN BY	DATE	DESIGNED BY	DATE	CHECKED BY	DATE	APPROVED BY	DATE



PUBLIC WORKS  
ENGINEERING DIVISION

7TH STREET RECONSTRUCTION  
SECTION VIEWS  
STA 0+50 - STA 7+50



N:\Landproj\2019 7th Street Reconstruction Phase II.dwg 7th St Phase II.dwg\_07\_4/15/2019 4:20:21 PM

REVISION	DESCRIPTION	DATE	DRAWN BY	DATE	DESIGNED BY	DATE	CHECKED BY	DATE	APPROVED BY	DATE

SCALES: PLAN & PROFILE

HORIZONTAL: 1" = 50'

0 12.5 25 50

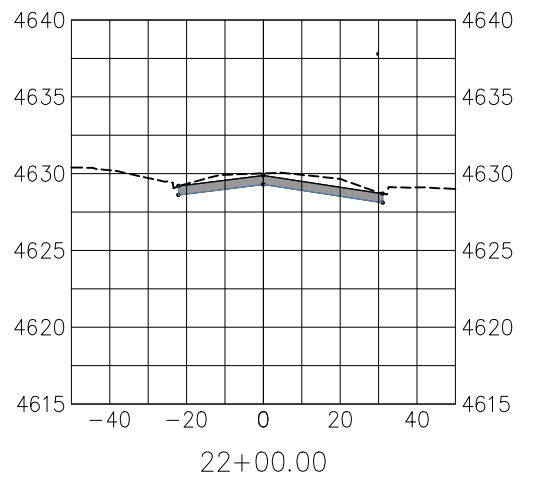
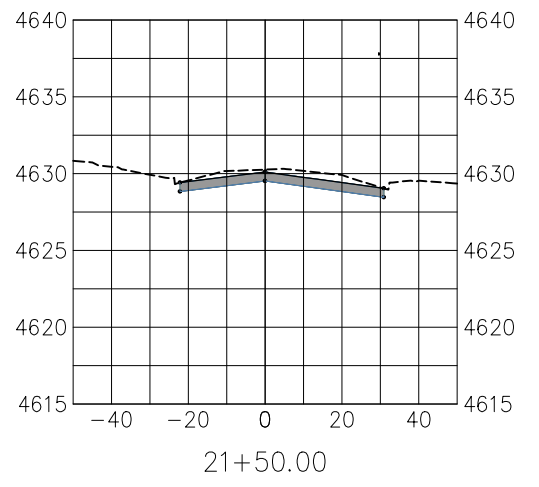
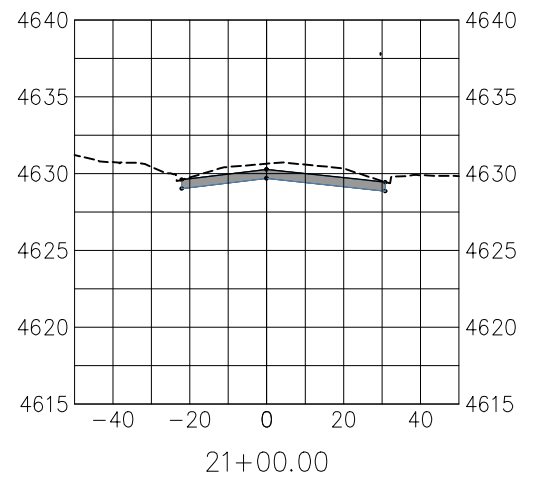
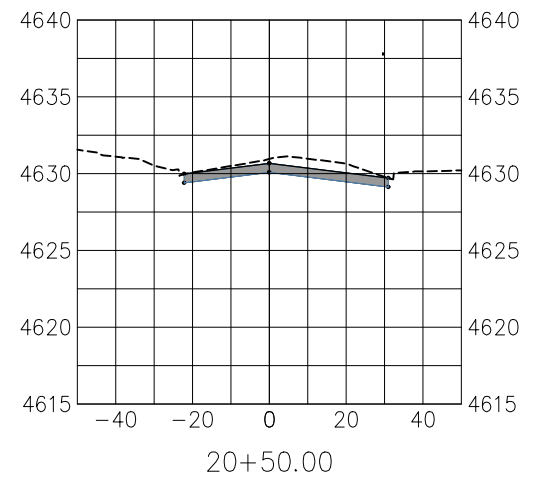
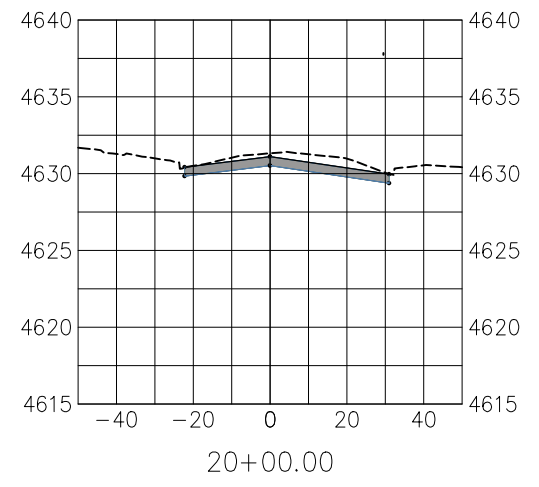
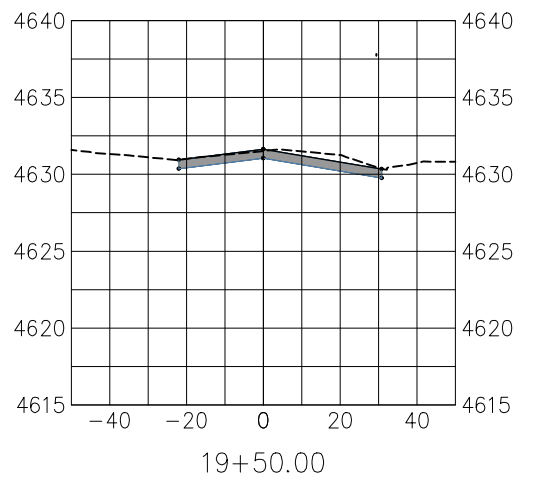
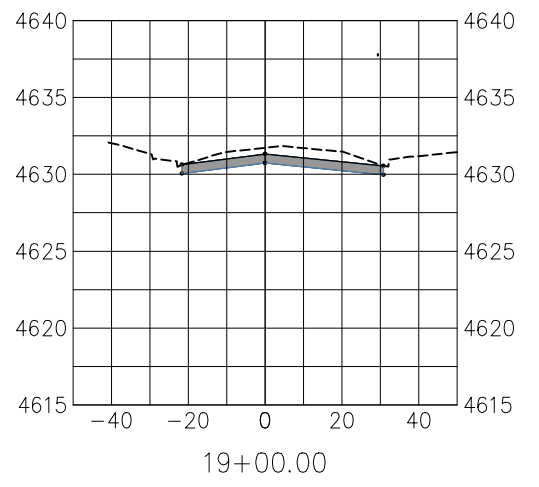
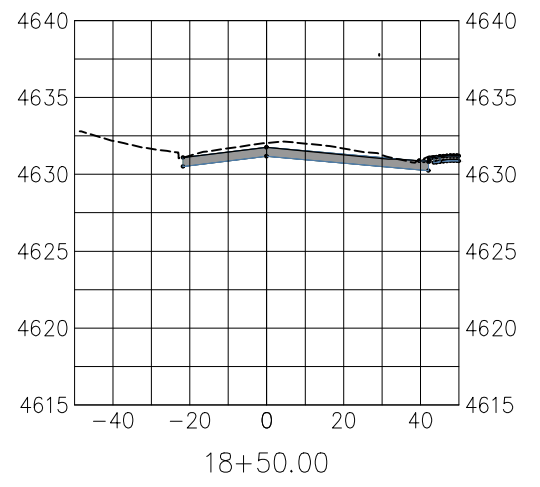
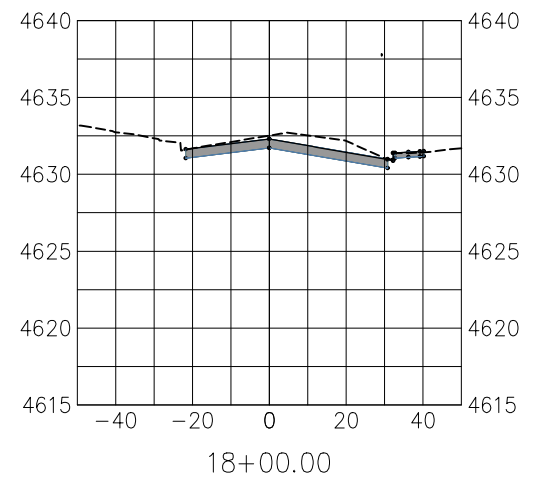
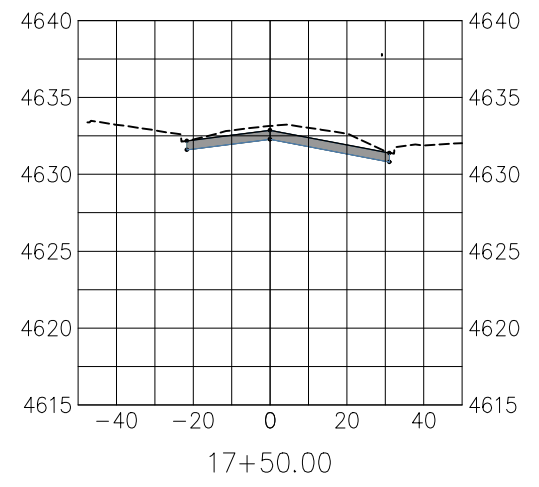
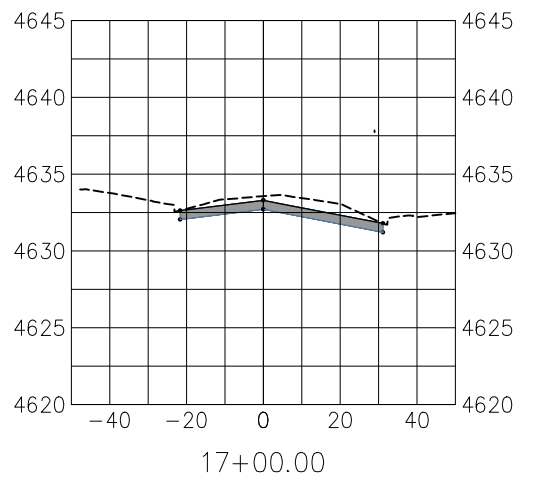
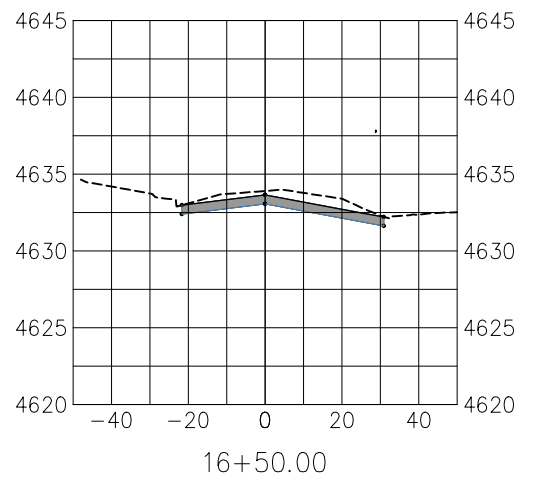
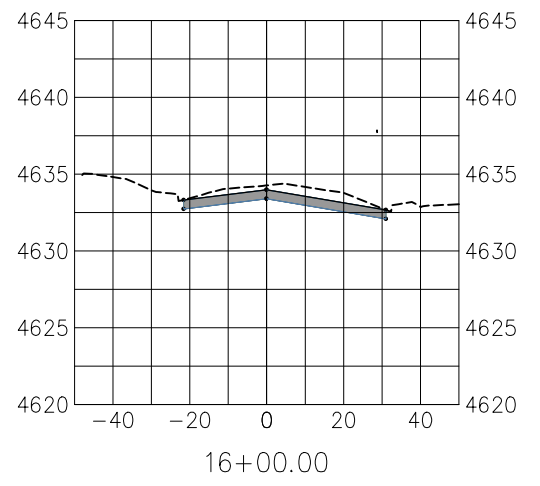
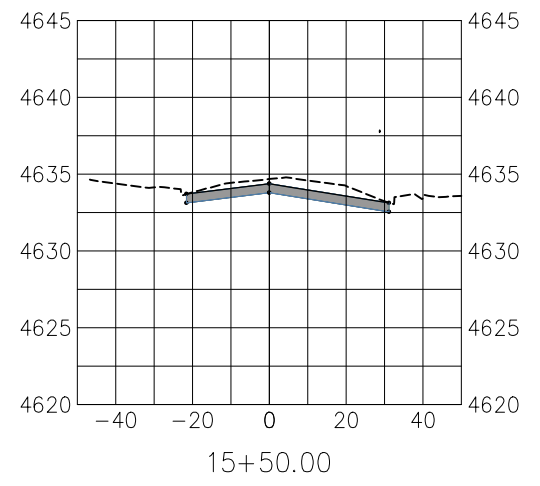
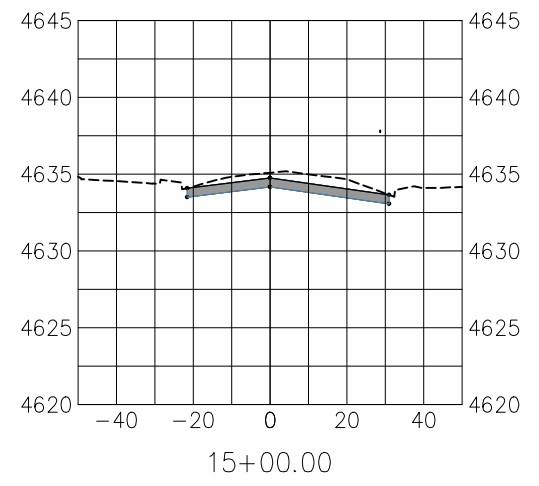
VERTICAL: 1" = 12.5'

0 3.13 6.25 12.5



**PUBLIC WORKS  
ENGINEERING DIVISION**

**7TH STREET RECONSTRUCTION  
SECTION VIEWS  
STA 8+00 - STA 15+00**



N:\Landproj\2019 7th Street Reconstruction Phase II.dwg 7th St Phase II.dwg 08\_4/15/2019 4:20:28 PM

REVISION	DESCRIPTION	DATE	DRAWN BY	DATE
REVISION			DESIGNED BY	DATE
REVISION			CHECKED BY	DATE
REVISION			APPROVED BY	DATE

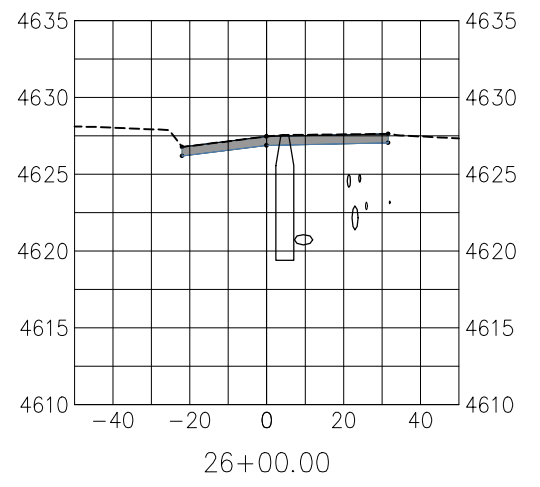
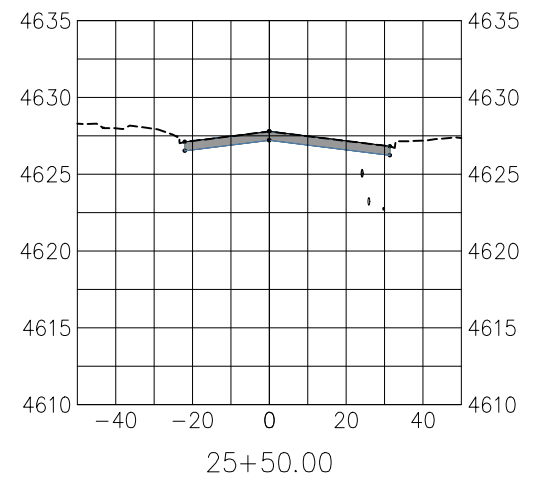
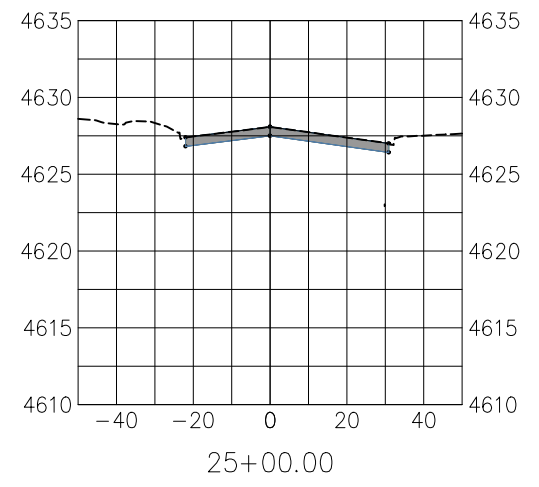
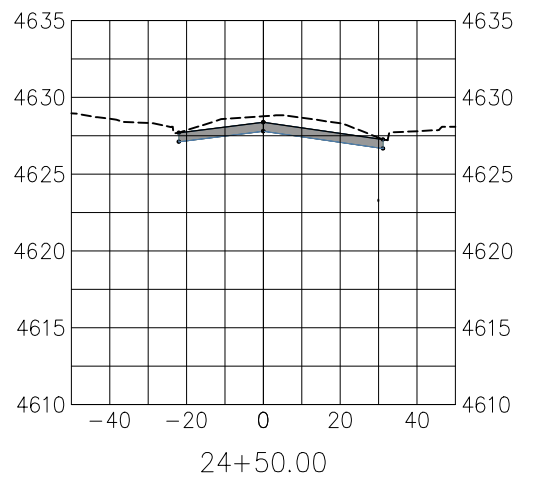
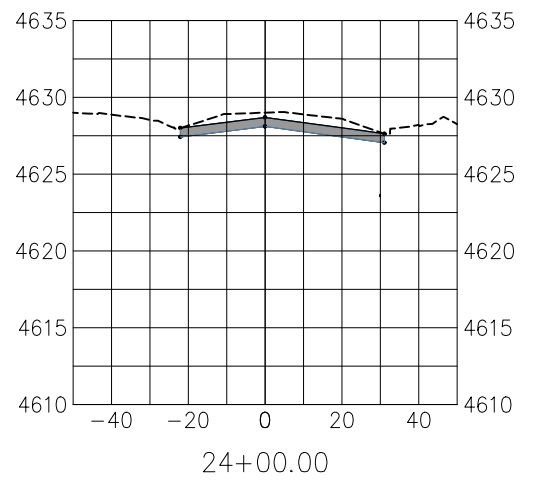
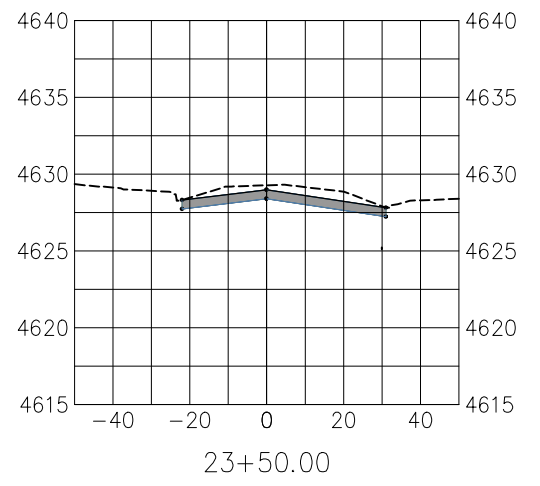
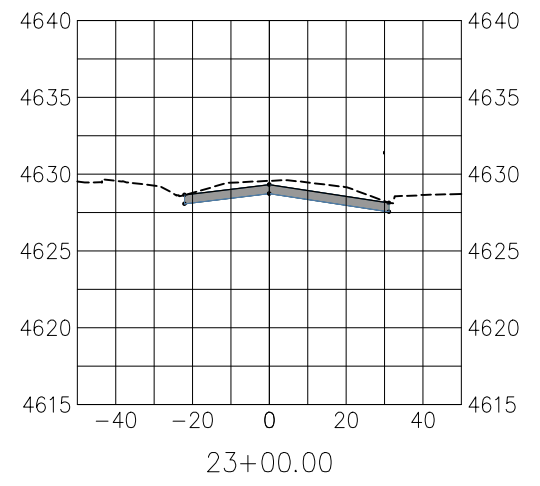
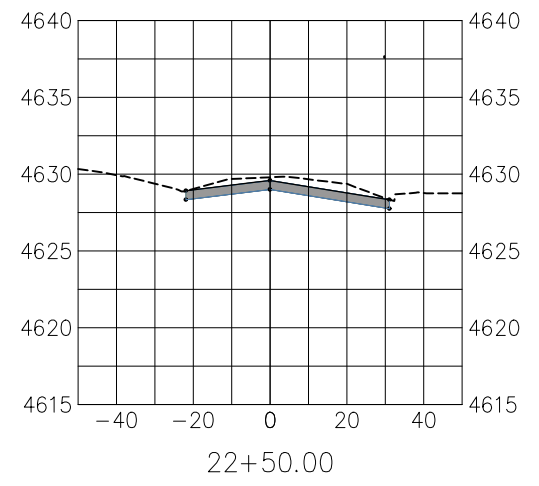
SCALES: PLAN & PROFILE

HORIZONTAL: 1" = 50'	0	12.5	25	50
VERTICAL: 1" = 12.5'	0	3.13	6.25	12.5



**PUBLIC WORKS  
ENGINEERING DIVISION**

**7TH STREET RECONSTRUCTION  
SECTION VIEWS  
STA 15+50 - STA 22+50**



N:\Landproj\2019 7th Street Reconstruction Phase II.dwg\7th St Phase II.dwg\_09\_4/15/2019 4:20:38 PM

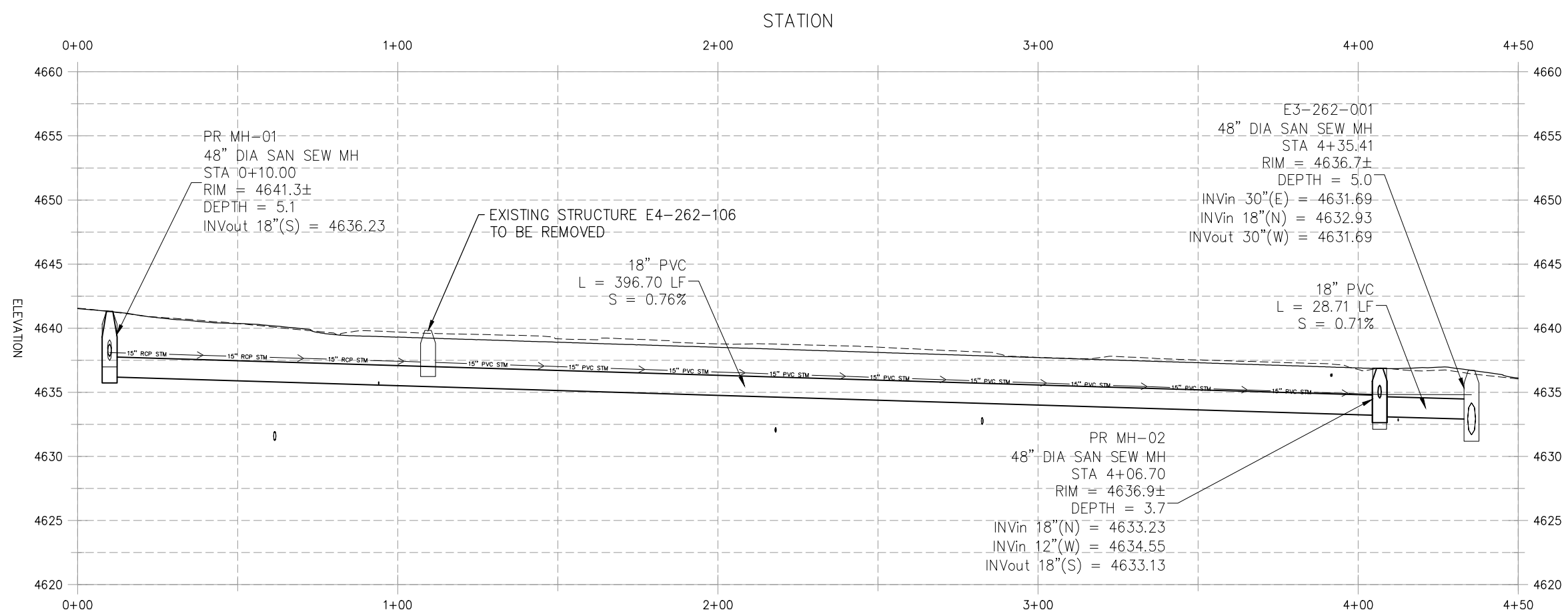
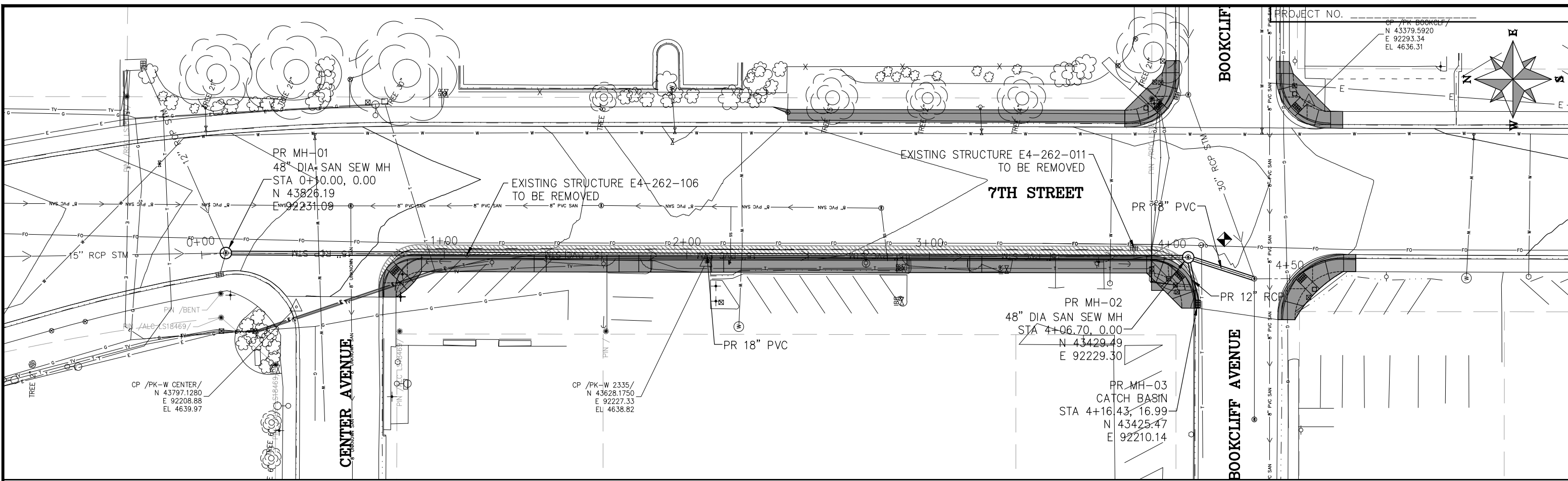
REVISION	DESCRIPTION	DATE	DRAWN BY	DATE
△				
△				
△				
△				

SCALES: PLAN & PROFILE	
HORIZONTAL: 1" = 50'	0 12.5 25 50
VERTICAL: 1" = 12.5'	0 3.13 6.25 12.5



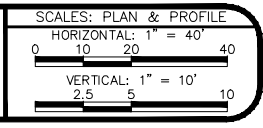
**PUBLIC WORKS  
ENGINEERING DIVISION**

**7TH STREET RECONSTRUCTION  
SECTION VIEWS  
STA 23+00 - STA 27+00**



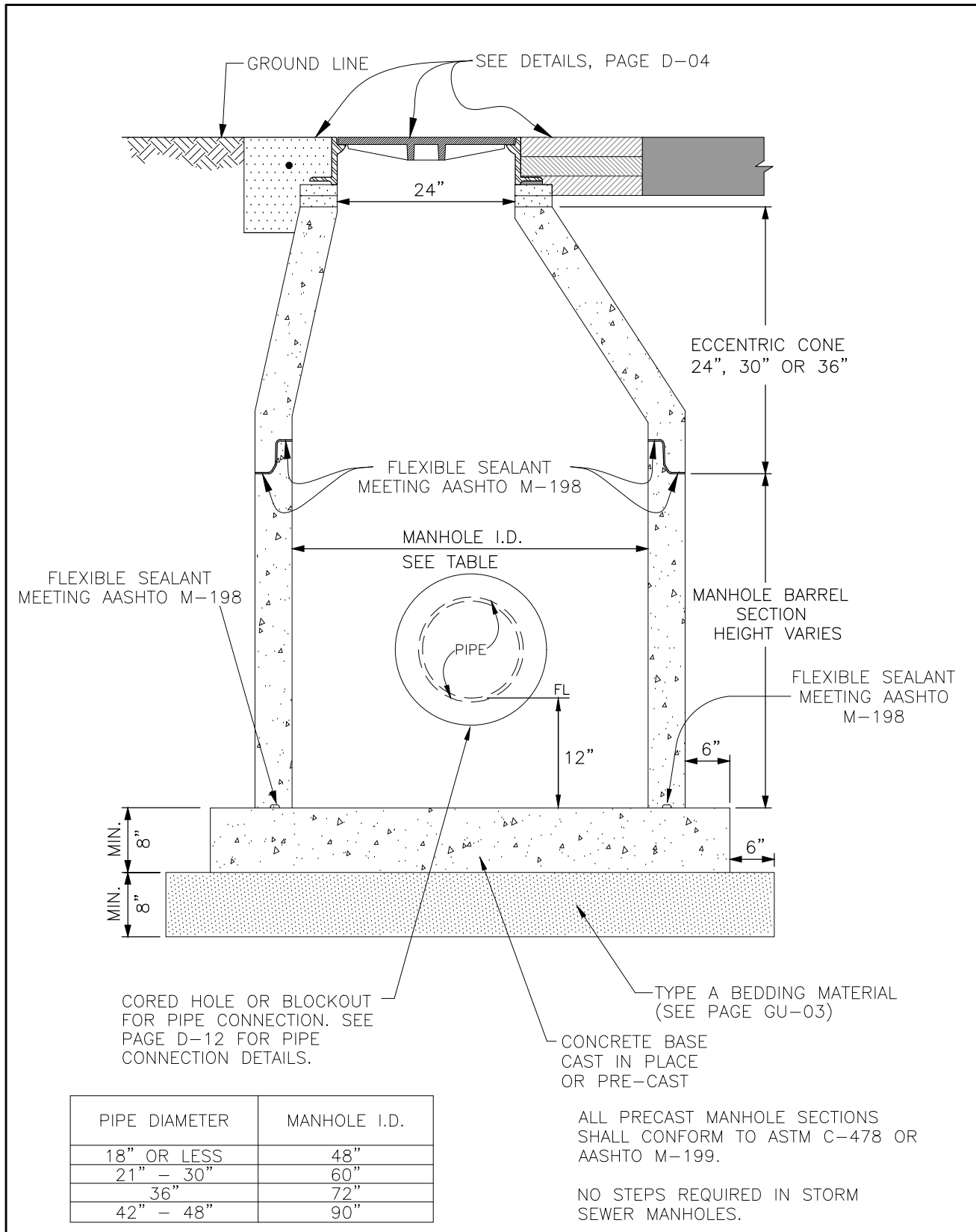
N:\Landproj\2019 7th Street Reconstruction Phase II.dwg 7th St Phase II.dwg 10\_4/15/2019 4:20:49 PM

REVISION	DESCRIPTION	DATE	DRAWN BY	DATE	DESIGNED BY	DATE	CHECKED BY	DATE	APPROVED BY	DATE
REVISION										
REVISION										
REVISION										
REVISION										



**PUBLIC WORKS  
ENGINEERING DIVISION**

**7TH STREET RECONSTRUCTION  
STORM PLAN AND PROFILE  
STA 0+00 - STA 4+50**



PIPE DIAMETER	MANHOLE I.D.
18" OR LESS	48"
21" - 30"	60"
36"	72"
42" - 48"	90"

ALL PRECAST MANHOLE SECTIONS SHALL CONFORM TO ASTM C-478 OR AASHTO M-199.

NO STEPS REQUIRED IN STORM SEWER MANHOLES.

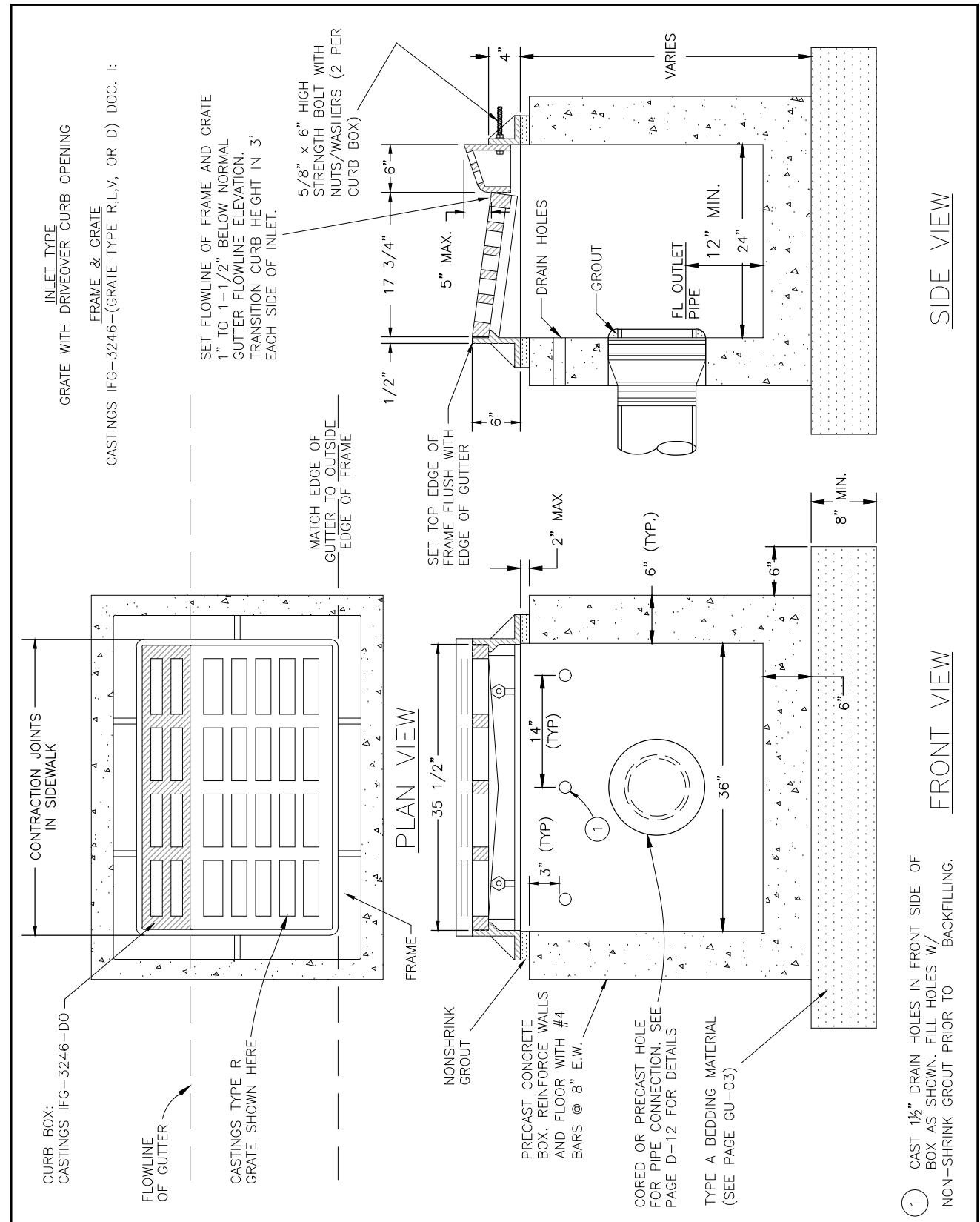
**STANDARD STORM SEWER MANHOLE**

DEPARTMENT OF PUBLIC WORKS AND PLANNING  
ENGINEERING DIVISION  
CITY OF GRAND JUNCTION, COLORADO

STANDARD STORM DRAIN  
DETAIL

APPROVED: DN  
REVISED: FEB 2007  
DRAWN: TLT

PAGE  
D-03



**STORM DRAIN INLET WITH DRIVE OVER CURB OPENING**

DEPARTMENT OF PUBLIC WORKS AND PLANNING  
ENGINEERING DIVISION  
CITY OF GRAND JUNCTION, COLORADO

STANDARD STORM DRAIN  
DETAIL

APPROVED: DN  
DATE: APRIL 2007  
DRAWN: CM

PAGE  
D-06

N:\Landproj\2019 7th Street Reconstruction Phase II.dwg 7th St Phase II.dwg, 11, 4/15/2019 4:20:59 PM

REVISION	DESCRIPTION	DATE	DRAWN BY	DATE	DESIGNED BY	DATE	CHECKED BY	DATE	APPROVED BY	DATE
REVISION										
REVISION										
REVISION										
REVISION										

SCALES: PLAN & PROFILE  
NOT TO SCALE

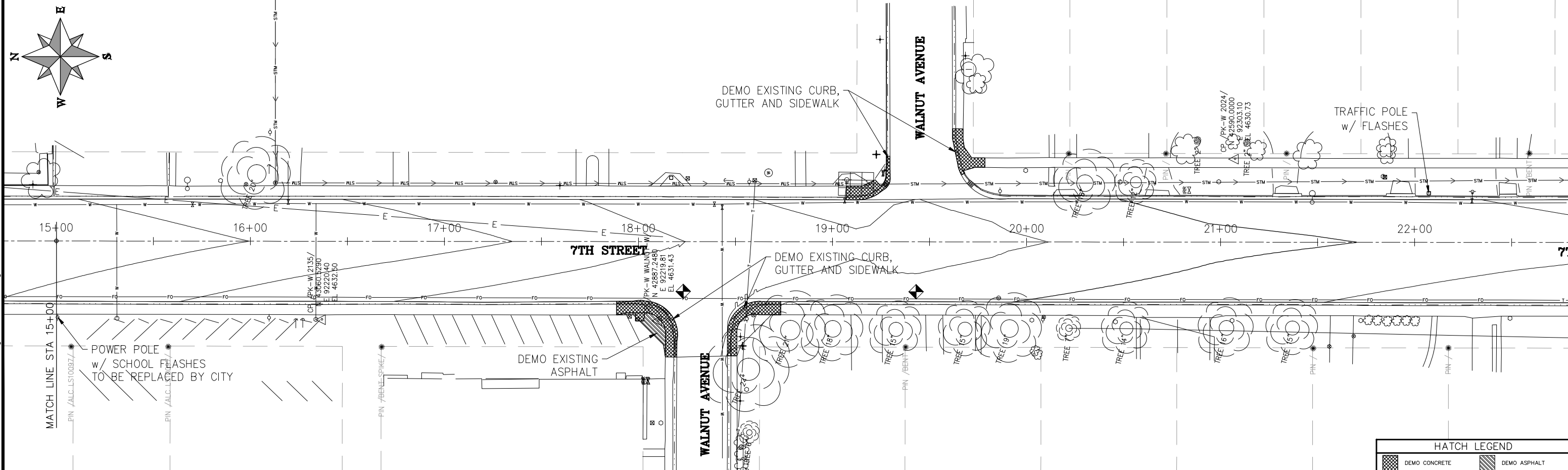
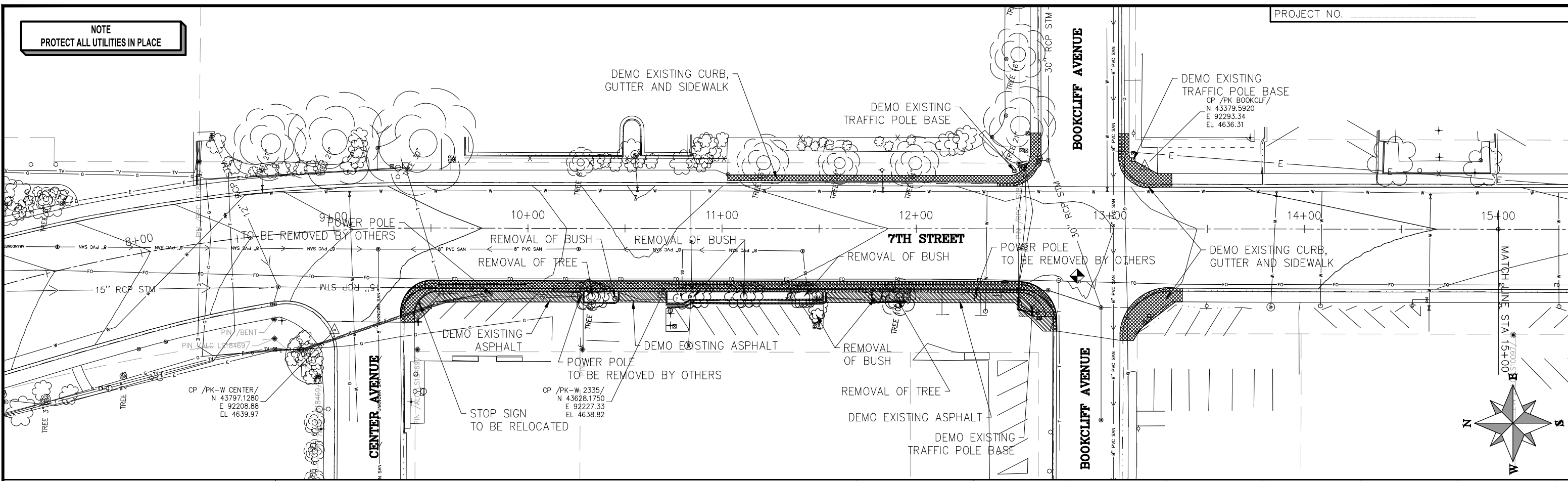


**PUBLIC WORKS  
ENGINEERING DIVISION**

**7TH STREET RECONSTRUCTION  
STORM SEWER DETAILS**



**NOTE**  
PROTECT ALL UTILITIES IN PLACE



**HATCH LEGEND**

	DEMO CONCRETE
	DEMO ASPHALT

REVISION	DESCRIPTION	DATE	DRAWN BY	DATE
1	Addition of Demo & Utility Sheets	04/15/19		
2				
3				
4				

**SCALES: PLAN & PROFILE**

HORIZONTAL: 1" = 50'

0 12.5 25 50

VERTICAL: 1" =



**PUBLIC WORKS**  
ENGINEERING DIVISION

**7TH STREET RECONSTRUCTION**  
PHASE II – ORCHARD AVE TO PATTERSON RD  
DEMO PLAN STA 15+00 – STA 22+50

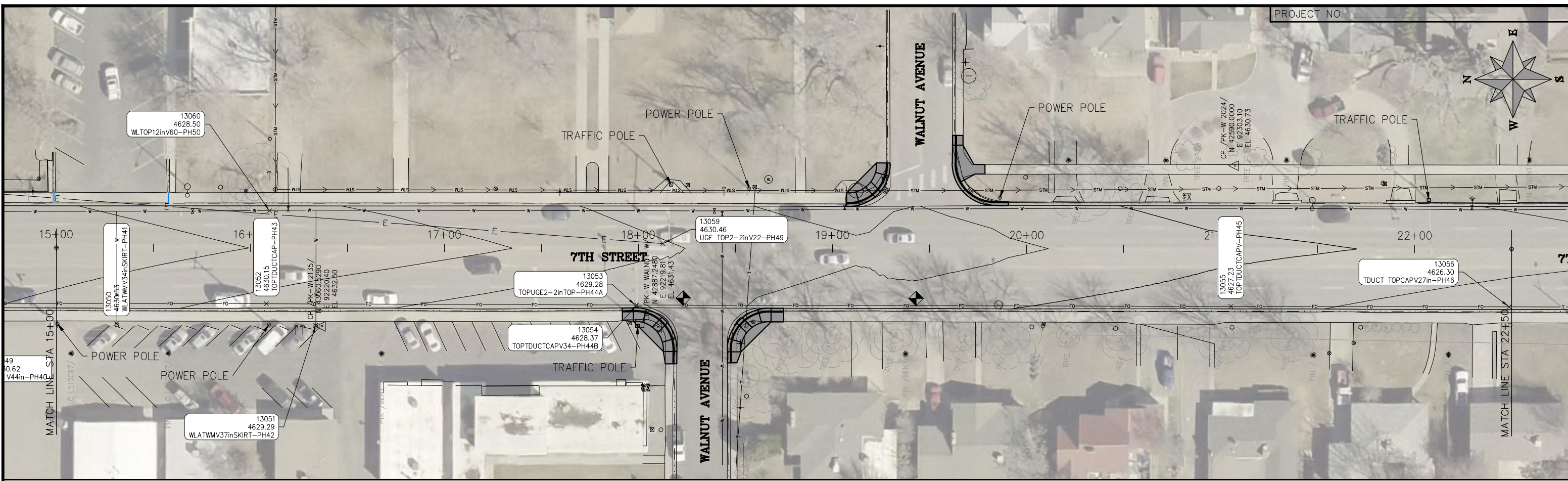
**A1**

N:\Landproj\2019 7th Street Reconstruction Phase II.dwg 7th St Phase II.dwg, AI, 4/15/2019 4:21:02 PM



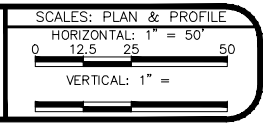






N:\Landproj\2019 7th Street Reconstruction Phase II.dwg 7th St Phase II\_Utl.dwg, 04 (2), 4/16/2019 3:56:39 PM

REVISION	DESCRIPTION	DATE	DRAWN BY	DATE
REVISION	△ Addition of Demo & Utility Sheets	04/15/19	DESIGNED BY	DATE
REVISION	△		CHECKED BY	DATE
REVISION	△		APPROVED BY	DATE



**PUBLIC WORKS  
ENGINEERING DIVISION**

**7TH STREET RECONSTRUCTION  
PHASE II – ORCHARD AVE TO PATTERSON RD  
UTILITY PLAN STA 15+00 – STA 22+50**