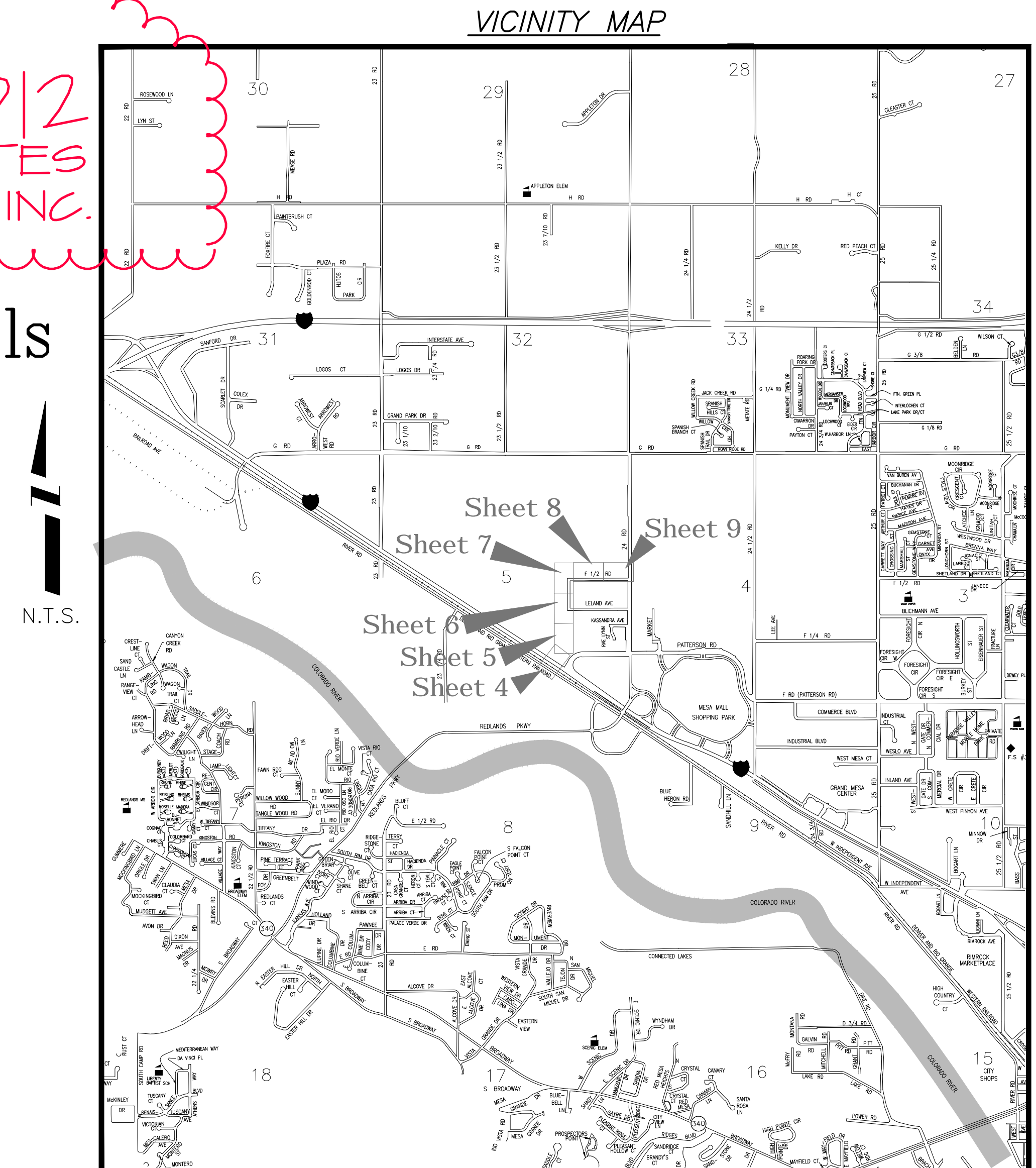


24 Road Sewer Interceptor from the River Road Interceptor to F 1/2 and 24 Rd June 2012

AS BUILT
DECEMBER 2012
SURVEYOR: SOUDER, MILLER & ASSOCIATES
CONTRACTOR: M.A CONCRETE CONSTRUCTION INC.

- 1 ————— Cover Sheet
- 2 ————— Standard Abbreviations, Legend, and Symbols
- 3 ————— Summary of Approximate Quantities
- 4-9 ————— Sanitary Sewer Plan and Profiles
(See map at right for sht locations)
- 10 ————— Detail for Storm Drain Outlet Works
2384 F Road



UTILITIES AND AGENCIES								
AGENCY	NAME	POSITION	ROLE	MAILING ADDRESS	STREET ADDRESS	CITY, STATE	VOICE-WK	FAX
GRAND JUNCTION, CITY OF	JUSTIN VENSEL	PROJECT ENGINEER	PROJECT ENGINEER	250 N. 5th STREET	250 N. 5th STREET	GRAND JCT., CO 81501	(970) 256-4017	(970) 256-4022
GRAND JUNCTION, CITY OF	BRET GUILLORY	UTILITY ENGINEER	SANITARY SEWER	250 N. 5th STREET	250 N. 5th STREET	GRAND JCT., CO 81501	(970) 244-1590	(970) 256-4022
GRAND VALLEY IRRIGATION CO.	PHIL BERTRAND		IRRIGATION	688 26 ROAD	688 26 ROAD	GRAND JCT., CO 81506	(970) 242-2762	
BRESNAN	CHUCK WEIDMAN	MANAGER	CABLE TV	2502 FORESIGHT CIRCLE	2502 FORESIGHT CIRCLE	GRAND JCT., CO 81504	(970) 245-8750	(970) 245-6803
U.S. WEST/QWEST	CHRIS JOHNSON	ENGINEER	TELEPHONE	2524 BLICHMANN AVE	2524 BLICHMANN AVE	GRAND JCT., CO 81504	(970) 244-4311	(970) 240-4349
UTE WATER	DARYL MOORE	SUPERVISOR	WATER	PO BOX 460		GRAND JCT., CO 81502	(970) 242-7491	(970) 242-9189
XCEL	DAN STEINKIRCHNER	UNIT MANAGER	GAS, ELECTRIC	2538 BLICHMANN AVE	2538 BLICHMANN AVE	GRAND JCT., CO 81506	(970) 244-2656	(970) 244-2661
GRAND VALLEY DRAINAGE DISTRICT	KEVIN WILLIAMS	MANAGER	DRAINAGE	P. O. Box 969	722 23 Road	GRAND JCT., CO 81502	(970) 242-4343	(970) 242-4348

AS BUILT



Public Works & Planning
Engineering Division

NOTE: NOTIFY AFFECTED UTILITY VENDOR 48 HOURS PRIOR TO EXCAVATIONS THAT WILL EXPOSE UTILITY LINES. THE COVER SHEET WILL HAVE A LISTING OF UTILITY VENDORS AND TELEPHONE NUMBERS.

REVISION	DESCRIPTION	DATE
REVISION		
REVISION		
REVISION		
REVISION		

DRAWING STATUS:	
●	PROGRESS
○	FINAL CONSTRUCTION DRAWINGS
○	ASBUILT
DESIGNED BY:	
JUSTIN VENSEL, PROJECT ENGINEER	DATE
REVIEWED BY:	
BRET GUILLORY, UTILITY ENGINEER	DATE
AUTHORIZED FOR CONSTRUCTION	
TRENTON C. PRALL, ENGINEERING MANAGER	DATE
ACCEPTED AS CONSTRUCTED	
JUSTIN VENSEL, PROJECT ENGINEER	DATE

ABBREVIATIONS

AASHTO	AMERICAN ASSOCIATION OF STATE HIGHWAY & TRANSPORTATION OFFICIALS
ABC	AGGREGATE BASE COURSE
AC	ASBESTOS CEMENT
AP	ANGLE POINT
ASB	ANCHORED STRAW BALES
ASP	ALUMINIZED STEEL PIPE
ASTM	AMERICAN SOCIETY FOR TESTING MATERIALS
AWWA	AMERICAN WATER WORKS ASSOCIATION
BC	BACK OF CURB
BF	BUTTERFLY VALVE
BOW	BACK OF WALK
BCR	BEGIN CURB RETURN
BOT	BOTTOM
BSWMP	BETTER STORM WATER MANAGEMENT PRACTICES
CH	CHORD
CAP	CORRUGATED ALUMINUM PIPE
CDOT	COLORADO DEPARTMENT OF TRANSPORTATION
CI	CAST IRON
C,G,& SW	CURB, GUTTER & SIDEWALK
CL	CENTER LINE
CL	CLEAR
CMP	CORRUGATED METAL PIPE
CO	CLEAN OUT
COMB	COMBINATION (AS IN STORM SEWER AND SANITARY SEWER)
CONC	CONCRETE
CSM	CITY SURVEY MONUMENT
CSP	CORRUGATED STEEL PIPE
CU	COPPER
DI	DUCTILE IRON
DWY	DRIVEWAY
E	ELECTRIC
ECR	END CURB RETURN
EG	EDGE OF GUTTER
EL	ELEVATION
EP	EDGE OF PAVEMENT
EX	EXISTING
FB	FULL BODY
FC	FACE OF CURB
FG	FINISHED GRADE
E	FLOW LINE
FL	FLANGE
FM	FORCE MAIN
FO	FIBER OPTICS
FS	FAR SIDE
FTG	FOOTING
G	GAS
GB	GRADE BREAK
GM	GAS METER
GV	GATE VALVE
HBP	HOT BITUMINOUS PAVEMENT
HDPE	HIGH DENSITY POLYETHYLENE
INV	INVERT
IRR	IRRIGATION
L	LENGTH OF ARC
LC	LONG CHORD
LF	LINEAR FEET
LL	LONG ARC
LS	SHORT ARC
LT	LEFT
MB	MAILBOX
MCSM	MESA COUNTY SURVEY MONUMENT
MH	MANHOLE
MJ	MECHANICAL JOINT
MW	MILL WRAP
N/A	NOT APPLICABLE
NIC	NOT IN CONTRACT
NOP	NO ONE PERSON
NRCP	NON-REINFORCED CONCRETE PIPE
NS	NEAR SIDE
NTS	NOT TO SCALE
OHP	OVERHEAD POWER
OHT	OVERHEAD TELEPHONE
PC	POINT OF CURVATURE
PCC	POINT OF COMPOUND CURVATURE
PE	POLYETHYLENE
PERF	PERFORATED
PIP	POINT OF INTERSECTION
PIP	PLASTIC IRRIGATION PIPE
POC	POINT ON CURVE
POT	POINT ON TANGENT
PR	PROPOSED
PRC	POINT OF REVERSE CURVATURE
PT	POINT OF TANGENCY
PVC	POLYVINYL CHLORIDE
R	RADIUS
RCP	REINFORCED CONCRETE PIPE
REQ'D	REQUIRED
RG	RESTRAINED GLANDS
RL	LONG RADIUS
ROW	RIGHT OF WAY
RP	RADIUS POINT
RR	RAIL ROAD
RS	SHORT RADIUS
RT	RIGHT
S	SLOPE
SAN	SANITARY
SC	SHORT CHORD
SCD	STANDARD CONTRACT DOCUMENTS
SCH	SCHEDULE
SF	SILT FENCE
SL	SECTION LINE
SSRB	STANDARD SPECIFICATIONS FOR ROAD & BRIDGE CONSTRUCTION
SSUU	STANDARD SPECIFICATIONS FOR CONSTRUCTION OF UNDERGROUND UTILITIES
STA	STATION
STL	STEEL
STM	STORM
T	TELEPHONE
TAN	LENGTH OF TANGENT
TC	TOP OF CURB
TH	TEST HOLE
TV	TELEVISION
(TYP)	TYPICAL
UU	UNDERGROUND UTILITIES
VC	VERTICAL CURVE
VCP	VITRIFIED CLAY PIPE
VPC	VERTICAL POINT OF CURVATURE
VPCC	VERTICAL POINT OF COMPOUND CURVATURE
VPRC	VERTICAL POINT OF REVERSE CURVATURE
VPI	VERTICAL POINT OF INTERSECTION
VPT	VERTICAL POINT OF TANGENCY
W	WATER
Δ	DELTA ANGLE

LEGEND

BSWMP DRAINAGE BASIN BOUNDARY	
BSWMP ANCHORED STRAW BALES	
BSWMP SILT FENCE	
BUILDING	
CONCRETE CURB AND GUTTER	
CONCRETE CURB, GUTTER, & SIDEWALK	
CONCRETE DITCH	
CONCRETE SIDEWALK	
CULVERT	
EARTH DITCH	
EDGE OF GRAVEL	
EDGE OF PAVEMENT	
FENCE (BARBED WIRE)	
FENCE (CHAIN LINK)	
FENCE (IRON)	
FENCE (PLASTIC)	
FENCE (WOOD)	
FENCE (WOVEN WIRE)	
GUARD RAIL	
HATCHING: INDICATES ASPHALT REMOVAL	
HATCHING: INDICATES CONCRETE REMOVAL	
HATCHING: INDICATES STAGING AREA	
LINE (CENTER OF IMPROVEMENTS)	
LINE (CITY LIMITS)	
LINE (CONTROL)	
LINE (EASEMENT)	
LINE (MONUMENT/SECTION)	
LINE (PROPERTY)	
LINE (RIGHT OF WAY)	
MATCH LINE	
PIPE (IRRIGATION)	
PIPE (SIPHON)	

PROPOSED CONCRETE CURB AND GUTTER	
PROPOSED CONCRETE CURB, GUTTER, & SIDEWALK	
PROPOSED CONCRETE SIDEWALK	
PROPOSED "WET" UTILITIES (CONSTRUCTION NOTE WILL INDICATE TYPE, SIZE, AND MATERIAL OF NEW MAIN)	
ALL PROPOSED FEATURES NOT SHOWN IN LEGEND WILL BE SHOWN THE SAME AS THEIR EXISTING COUNTERPART, BUT INDICATED BY BOLDER LINETYPE	
RAIL ROAD	
RETAINING WALL	
STRIPING (CONTINUOUS WHITE)	
STRIPING (DASHED WHITE)	
STRIPING (CONTINUOUS YELLOW)	
STRIPING (DASHED YELLOW)	
TOP OF SLOPE	
CONTOUR LINES (SHOWN BETWEEN TOP & TOE)	
TOE OF SLOPE	
TRAFFIC DETECTOR LOOP	
UTILITY LINE (ABANDON) (THIS CASE A WATER LINE)	
UTILITY LINE (CABLE TV)	
UTILITY LINE (ELECTRIC)	
UTILITY LINE (FIBER OPTIC)	
UTILITY LINE (GAS)	
UTILITY LINE (HIGH VOLTAGE OVERHEAD POWER)	
UTILITY LINE (OVERHEAD POWER)	
UTILITY LINE (OVERHEAD TELEPHONE)	
UTILITY LINE (SANITARY SEWER)	
UTILITY LINE (SANITARY SEWER FORCE MAIN)	
UTILITY LINE (SANITARY SEWER SERVICE)	
UTILITY LINE (STORM SEWER)	
UTILITY LINE (STORM SEWER, PERFORATED)	
UTILITY LINE (STORM/SANITARY SEWER SEWER COMBINATION)	
UTILITY LINE (TELEPHONE)	
UTILITY LINE (WATER)	

SYMBOLS

BENCH MARK	
CATCH BASIN	
CLEAN OUT	
CURB STOP	
FIRE HYDRANT	
GUY WIRE ANCHOR	
HEADGATE	
IRRIGATION PUMP	
MAILBOX	
MANHOLE (ELECTRIC)	
MANHOLE (GAS)	
MANHOLE (SANITARY/STORM)	
MANHOLE (TELEPHONE)	
MANHOLE (TV)	
MANHOLE (WATER)	
METER (GAS)	
METER (WATER)	
PEDESTAL (TELEPHONE)	
PEDESTAL (TV)	
PROPERTY PIN	
PULL BOX	
REDUCER FITTING	
SIGN OR POST (SIGN TYPE NOTED)	
SPRINKLER HEAD	
STREET LIGHT	
SURVEY MONUMENT (CITY)	
SURVEY MONUMENT (TYPE NOTED)	
TEST HOLE	
TRAFFIC PAINT MARKING	
TRAFFIC SIGNAL POLE AND MAST ARM	
UTILITY POLE	
VALVE (GAS)	
VALVE (IRRIGATION)	
VALVE (WATER)	
VEGETATION (HEDGE OR BUSH)	
VEGETATION (TREE STUMP)	
VEGETATION (TREE) (CALIPER SIZE NOTED)	
WATER HYDRANT	
WEIR	
YARD LIGHT	

BAR SCALE:

GRAPHIC SCALE

(IN FEET)
1 inch = 20 ft.

NORTH ARROW:

C:\Civil_3D\Projects\24 Road Sewer Interceptor.dwg, 02, 2/28/2013 12:30:39 PM

REVISION	DESCRIPTION	DATE

DRAWN BY	JCS	DATE	4-02
DESIGNED BY		DATE	
CHECKED BY		DATE	
APPROVED BY		DATE	

SCALE	
PLAN	
PROFILE	
HORIZ. 1"=20'	
VERT.	



PUBLIC WORKS AND PLANNING ENGINEERING DIVISION

CITY OF GRAND JUNCTION STANDARD ABBREVIATIONS, LEGEND, AND SYMBOLS SHEET

C:\Civil 3D Projects\24 Road Sewer Interceptor as bulis\24 road sewer interceptor.dwg, 03, 2/28/2013 12:31:03 PM

Item No.	CDOT, City Ref.	Description	Quantity	Units
1	102.9	4" Sanitary Sewer Service pipe (SDR-35 PVC) Price to include connection to sewer main and existing sewer service line.	100.	LF
2	102.9	18" Gravity Sewer Pipe (SDR-35 PVC)	3,221.	LF
3	102.9	24" Gravity Sewer Pipe (CIPP)(Price to include removal of concrete caps on the existing casing pipe, removal of old 10" PVC pipe, removal of bedding sand, and cleaning and jetting of casing pipe)	156.	LF
4	102.9	18"X4" Sewer Service Connection (Full Body Wye w/ Street 45)	10.	EA
5	102.11	Sanitary Manhole (60" I.D.) (Epoxy Coated) Include connection to existing pipes as required	13.	EA
6	102.11	Manhole Barrel Section (D>5')(60" I.D.)(Epoxy Coated)	87.	VF
7	103	24" Steel Casing Pipe (Minimum 0.44" Wall Thickness)	10.	LF
8	108.2	Import Trench Back fill (Including haul and disposal of unsuitable excavated material)	15,000.	TON
9	108.2	By-pass Pumping	Lump sum	
10	108.2	Connect to Existing Manhole (Price to include coring of new manhole and invert work)	1.	EA
11	108.7	Granular Stabilization Material	2,000.	TON
12	202	Removal of Asphalt	306.	SY
13	202	Removal of Trees at 2384 F Road (See Sheets 4 and 5)	Lump sum	
14	202	Removal of Manhole (No Reinstallation)	3.	EA
15	208	Best Management Plan (Price to include dirt bims and inlet protection)	Lump sum	
16	208	Stabilized Construction Entrance	3.	EA
17	209	Dust Abatement	35.	DAY
18	210	Reset Fence (Height and material as shown on Plans)	60.	LF
19	210	Reset Reflectors	3.	EA
20	304	Aggregate Base Course (Class 6) (12" Thick)	306.	SY
21	401	Hot Mix Asphalt (6" thick) (Grading SX Binder 64-22)(Three Lifts)	306.	SY
22	608	Replace concrete structure (see Detail Sheet 10)	Lump sum	
23	608	Concrete Curb (18"X6") (price to include removal of existing)	100.	LF
24	620	Portable Sanitary Facility	Lump sum	
25	625	Construction Surveying	Lump sum	
26	626	Mobilization	Lump sum	
27	630	Traffic Control Plan	Lump sum	
28	630	Traffic Control (Complete in Place)	Lump sum	
29	630	Flagging	200.	HR
30	GCC56	Newsletter	Lump sum	
31	710	Temporary Fencing (Minimum 6' Tall Chain Link)(10' Secured Panels)	40.	LF
MCR		Minor Contract Revisions	---	---

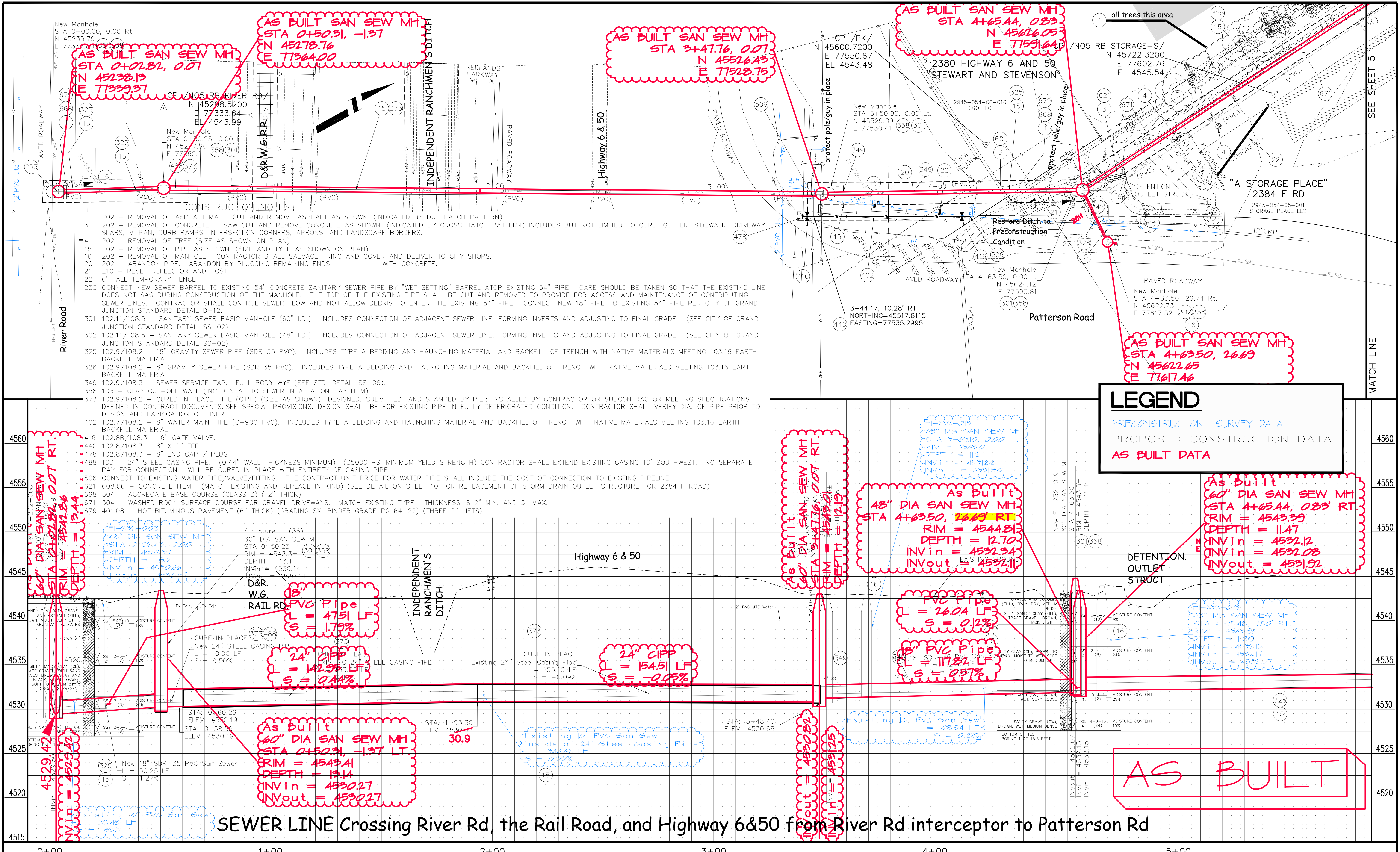
REVISION Δ	DESCRIPTION	DATE	DRAWN BY	DATE
REVISION Δ			DESIGNED BY	DATE
REVISION Δ			CHECKED BY	DATE
REVISION Δ			APPROVED BY	DATE

SCALE
N.T.S.



PUBLIC WORKS AND PLANNING ENGINEERING DIVISION

24 Road Sewer Interceptor SUMMARY OF APPROXIMATE QUANTITIES



SEWER LINE Crossing River Rd, the Rail Road, and Highway 6&50 from River Rd interceptor to Patterson Rd

REVISION	DESCRIPTION	DATE
REVISION Δ	ADDENDUM 1	6-21-2012
REVISION Δ		
REVISION Δ		
REVISION Δ		

DRAWN BY	JCS	DATE	2011
DESIGNED BY		DATE	
CHECKED BY		DATE	
APPROVED BY		DATE	

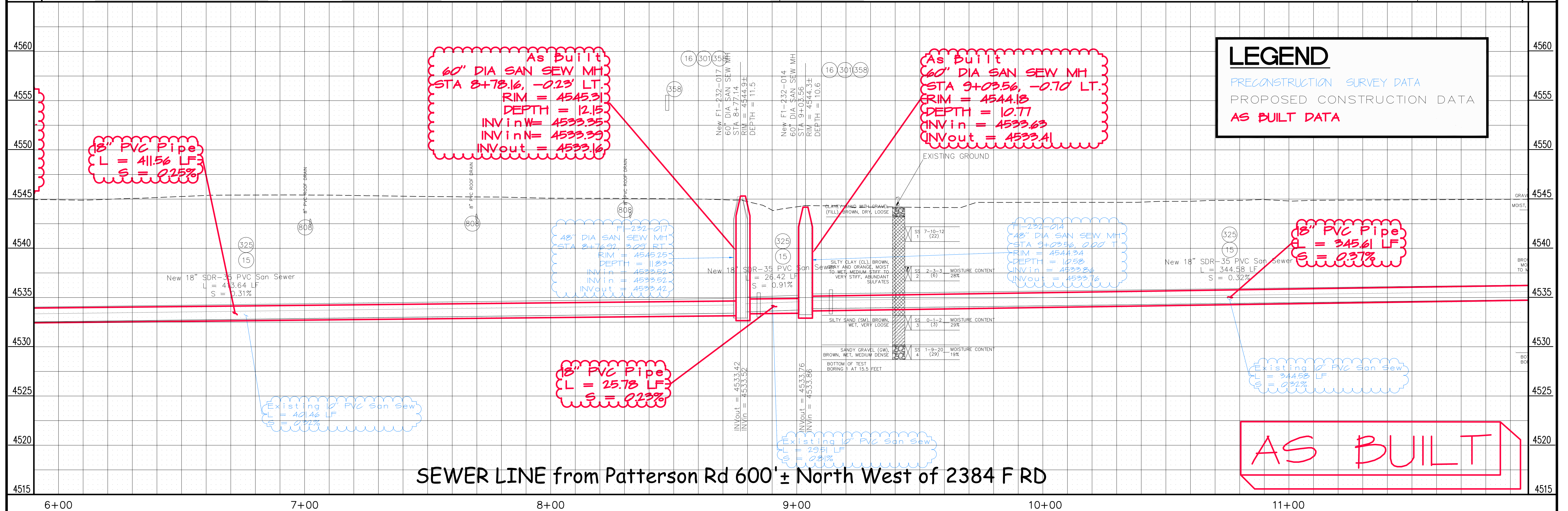
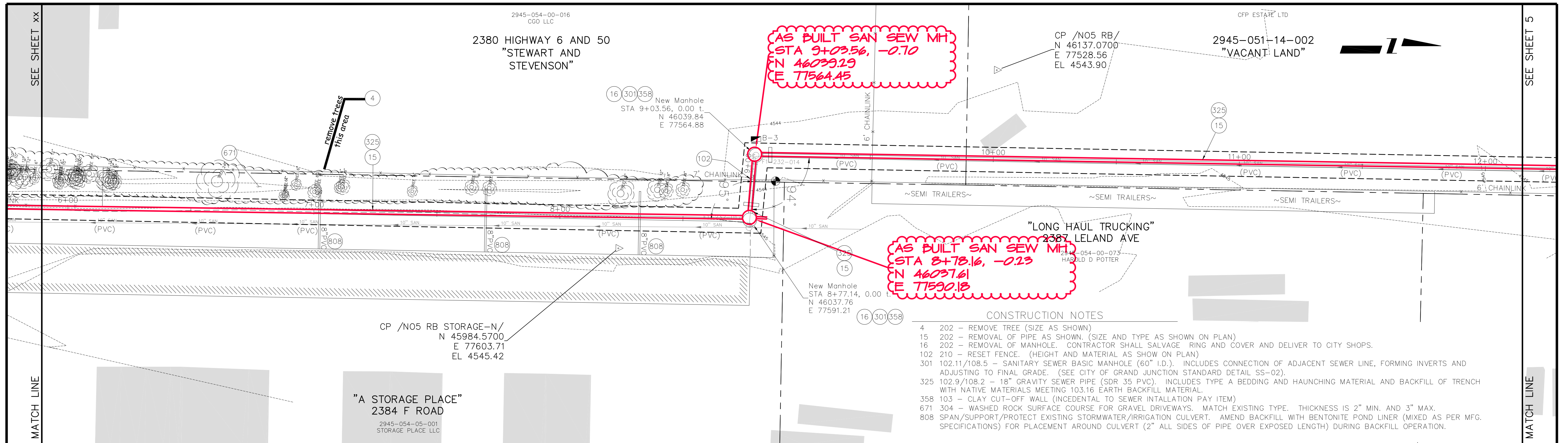
SCALES:	
PLAN	1" = 20'
PROFILE	1" = 5'



PUBLIC WORKS AND PLANNING ENGINEERING DIVISION

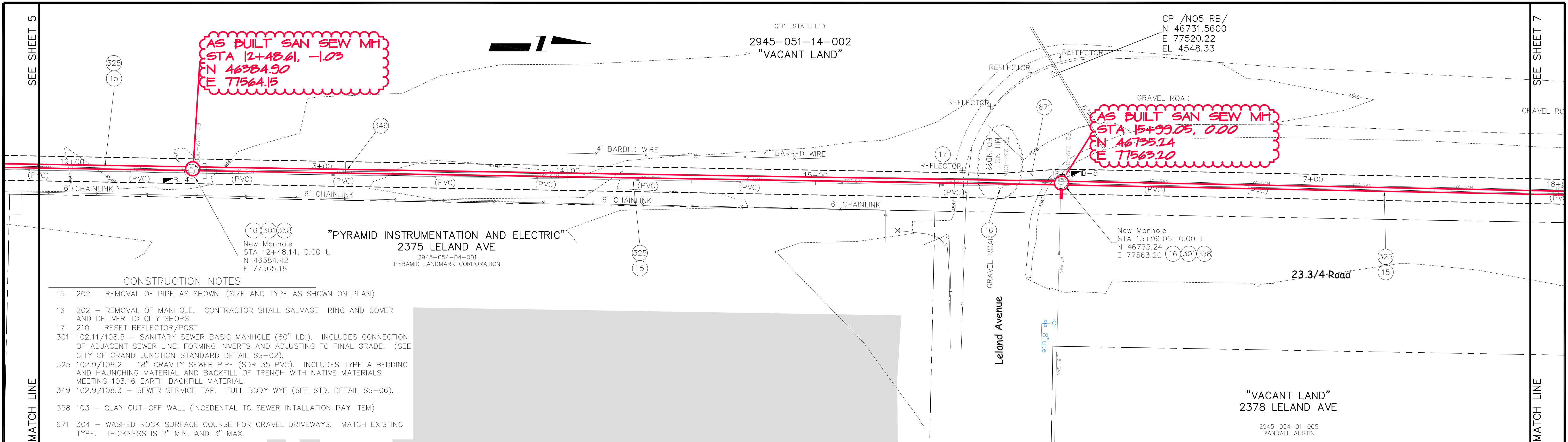
24 Road Sewer Interceptor SANITARY SEWER LINE PLAN AND PROFILE from River Rd interceptor to Patterson Rd at HWY 6&50

C:\Civil 3D Projects\24 Road Sewer Interceptor as built\24 road sewer interceptor.dwg, 04, 2/28/2013 2:59:53 PM



REVISION Δ ADDENDUM 1 REVISION Δ REVISION Δ REVISION Δ	DESCRIPTION DATE 6-21-2012	DRAWN BY JCS DATE 2011	DESIGNED BY DATE	CHECKED BY DATE	APPROVED BY DATE	SCALES: PLAN HORIZONTAL 1" = 10'	PROFILE HORIZONTAL 1" = 10' VERTICAL 1" = 2'		PUBLIC WORKS AND PLANNING ENGINEERING DIVISION	24 Road Sewer Interceptor SANITARY SEWER LINE PLAN AND PROFILE from Patterson Rd 600'± North West of 2384 F RD	5
---	----------------------------------	---------------------------	---------------------	--------------------	---------------------	---	--	--	--	--	---

C:\Civil 3D Projects\24 Road Sewer Interceptor as built\24 road sewer interceptor.dwg, 05, 2/28/2013 3:07:34 PM



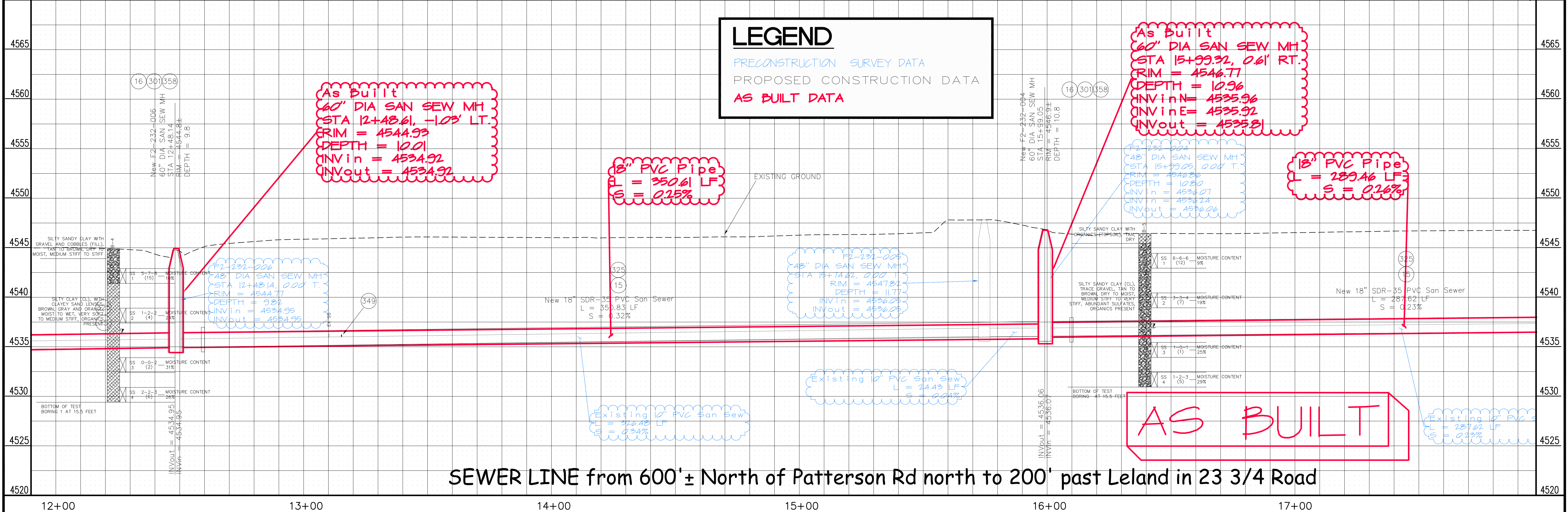
- CONSTRUCTION NOTES**
- 15 202 - REMOVAL OF PIPE AS SHOWN. (SIZE AND TYPE AS SHOWN ON PLAN)
 - 16 202 - REMOVAL OF MANHOLE. CONTRACTOR SHALL SALVAGE RING AND COVER AND DELIVER TO CITY SHOPS.
 - 17 210 - RESET REFLECTOR/POST
 - 301 102.11/108.5 - SANITARY SEWER BASIC MANHOLE (60" I.D.). INCLUDES CONNECTION OF ADJACENT SEWER LINE, FORMING INVERTS AND ADJUSTING TO FINAL GRADE. (SEE CITY OF GRAND JUNCTION STANDARD DETAIL SS-02).
 - 325 102.9/108.2 - 18" GRAVITY SEWER PIPE (SDR 35 PVC). INCLUDES TYPE A BEDDING AND HAUNCHING MATERIAL AND BACKFILL OF TRENCH WITH NATIVE MATERIALS MEETING 103.16 EARTH BACKFILL MATERIAL.
 - 349 102.9/108.3 - SEWER SERVICE TAP. FULL BODY WYE (SEE STD. DETAIL SS-06).
 - 358 103 - CLAY CUT-OFF WALL (INCIDENTAL TO SEWER INTALLATION PAY ITEM)
 - 671 304 - WASHED ROCK SURFACE COURSE FOR GRAVEL DRIVEWAYS. MATCH EXISTING TYPE. THICKNESS IS 2" MIN. AND 3" MAX.

LEGEND

PRECONSTRUCTION SURVEY DATA

PROPOSED CONSTRUCTION DATA

AS BUILT DATA



SEWER LINE from 600'± North of Patterson Rd north to 200' past Leland in 23 3/4 Road

REVISION	DESCRIPTION	DATE	DRAWN BY	DATE
△			JCS	2011
△				
△				
△				

SCALES:

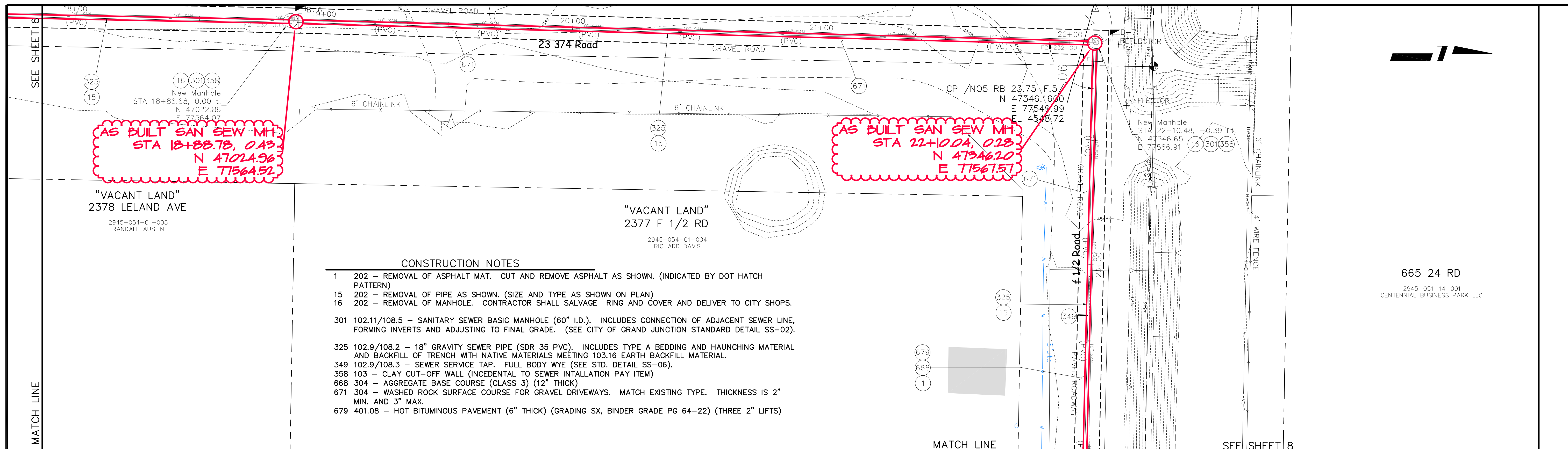
HORIZONTAL: 1" = 20'

VERTICAL: 1" = 5'

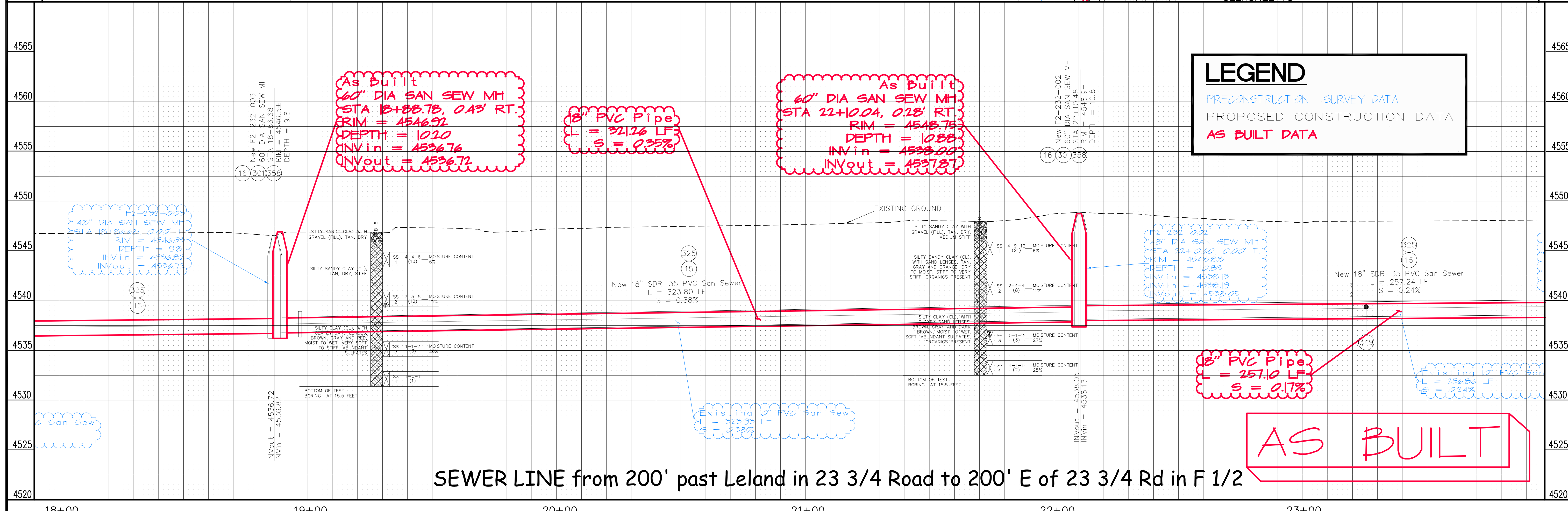


PUBLIC WORKS AND PLANNING ENGINEERING DIVISION

24 Road Sewer Interceptor SANITARY SEWER LINE PLAN AND PROFILE
from 600'± N of Patterson north to 200' past Leland in 23 3/4

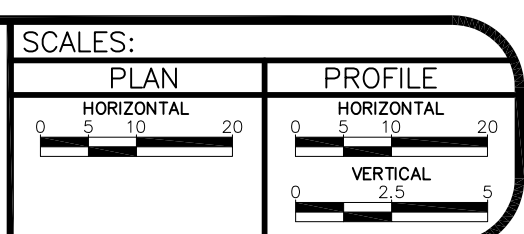


- CONSTRUCTION NOTES**
- 202 - REMOVAL OF ASPHALT MAT. CUT AND REMOVE ASPHALT AS SHOWN. (INDICATED BY DOT HATCH PATTERN)
 - 202 - REMOVAL OF PIPE AS SHOWN. (SIZE AND TYPE AS SHOWN ON PLAN)
 - 202 - REMOVAL OF MANHOLE. CONTRACTOR SHALL SALVAGE RING AND COVER AND DELIVER TO CITY SHOPS.
 - 301 102.11/108.5 - SANITARY SEWER BASIC MANHOLE (60" I.D.). INCLUDES CONNECTION OF ADJACENT SEWER LINE, FORMING INVERTS AND ADJUSTING TO FINAL GRADE. (SEE CITY OF GRAND JUNCTION STANDARD DETAIL SS-02).
 - 325 102.9/108.2 - 18" GRAVITY SEWER PIPE (SDR 35 PVC). INCLUDES TYPE A BEDDING AND HAUNCHING MATERIAL AND BACKFILL OF TRENCH WITH NATIVE MATERIALS MEETING 103.16 EARTH BACKFILL MATERIAL.
 - 349 102.9/108.3 - SEWER SERVICE TAP. FULL BODY WYE (SEE STD. DETAIL SS-06).
 - 358 103 - CLAY CUT-OFF WALL (INCIDENTAL TO SEWER INSTALLATION PAY ITEM)
 - 668 304 - AGGREGATE BASE COURSE (CLASS 3) (12" THICK)
 - 671 304 - WASHED ROCK SURFACE COURSE FOR GRAVEL DRIVEWAYS. MATCH EXISTING TYPE. THICKNESS IS 2" MIN. AND 3" MAX.
 - 679 401.08 - HOT BITUMINOUS PAVEMENT (6" THICK) (GRADING SX, BINDER GRADE PG 64-22) (THREE 2" LIFTS)



SEWER LINE from 200' past Leland in 23 3/4 Road to 200' E of 23 3/4 Rd in F 1/2

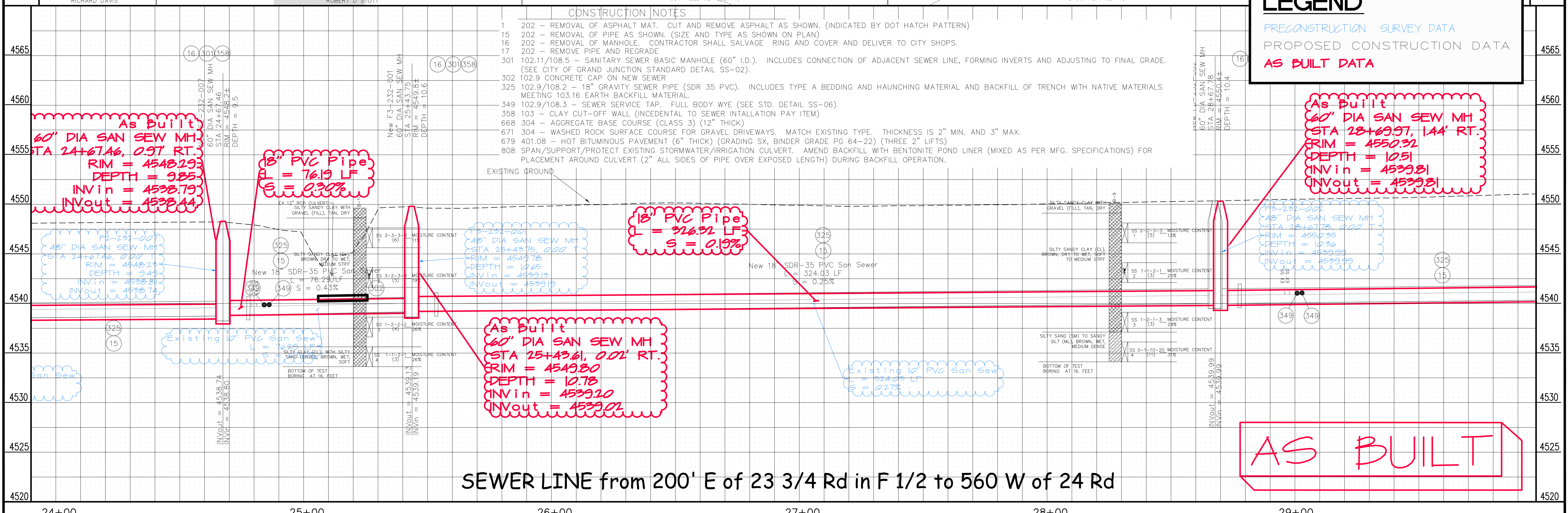
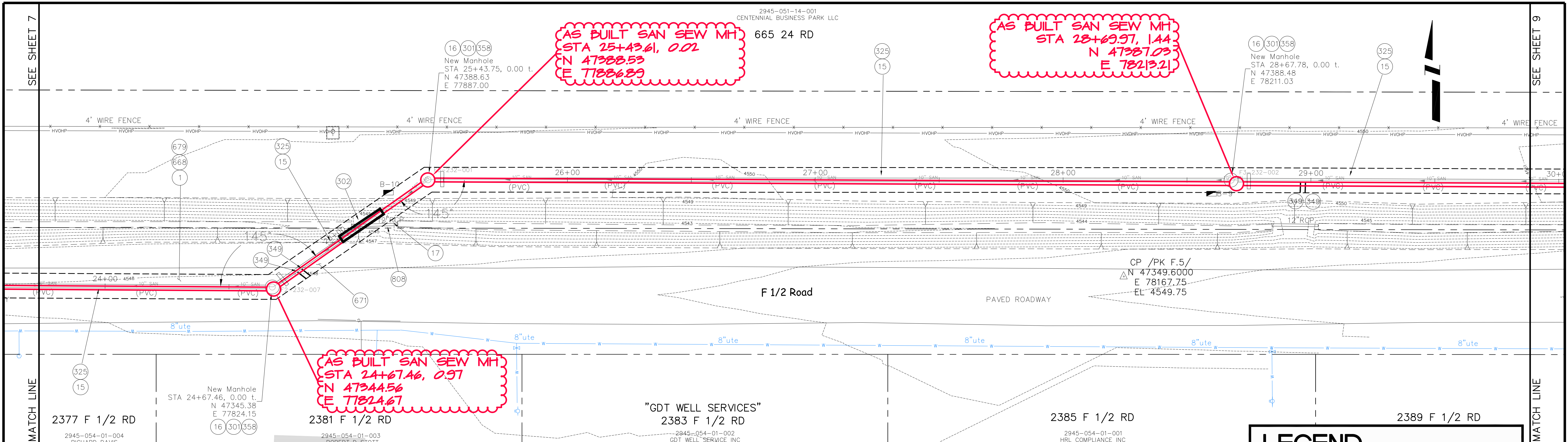
REVISION	DESCRIPTION	DATE	DRAWN BY	JCS	DATE	2011
REVISION			DESIGNED BY		DATE	
REVISION			CHECKED BY		DATE	
REVISION			APPROVED BY		DATE	



PUBLIC WORKS
 AND PLANNING
 ENGINEERING DIVISION

24 Road Sewer Interceptor
 SANITARY SEWER LINE PLAN AND PROFILE
 from 200' past Leland in 23 3/4 to 200' E of 23 3/4 in F 1/2

C:\Civil 3D Projects\24 Road Sewer Interceptor as built\24 road sewer interceptor.dwg, 07, 2/28/2013, 3:17:00 PM



SEWER LINE from 200' E of 23 3/4 Rd in F 1/2 to 560 W of 24 Rd

REVISION	DESCRIPTION	DATE	DRAWN BY JCS	DATE 2011
REVISION			DESIGNED BY	DATE
REVISION			CHECKED BY	DATE
REVISION			APPROVED BY	DATE

SCALES:

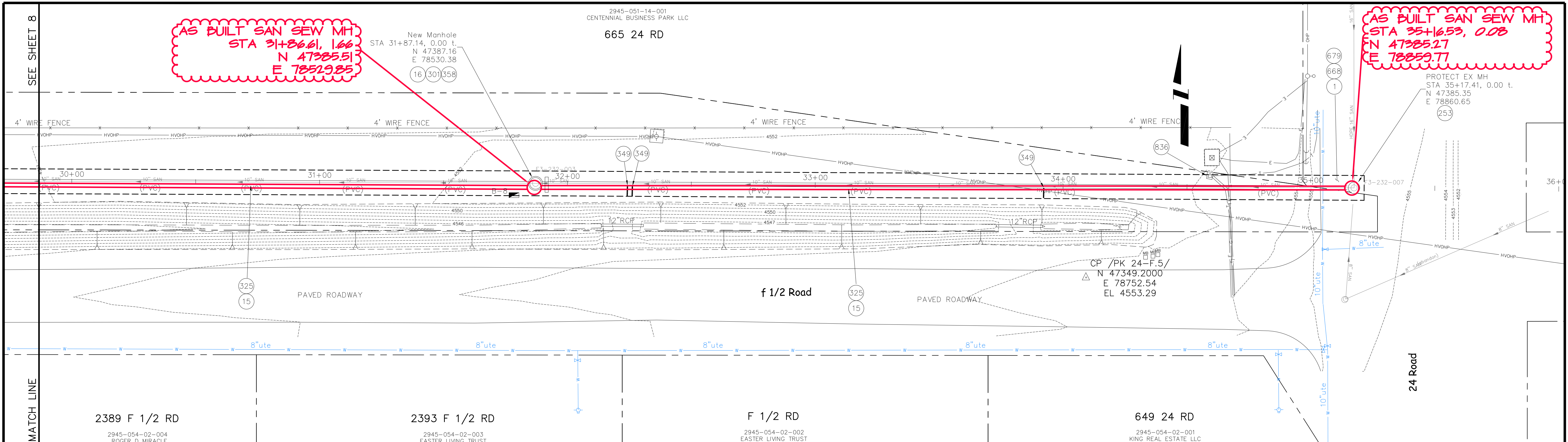
PLAN	1" = 20'
PROFILE	1" = 5'

CITY OF
Grand Junction
COLORADO

PUBLIC WORKS
AND PLANNING
ENGINEERING DIVISION

24 Road Sewer Interceptor
SANITARY SEWER LINE PLAN AND PROFILE
from 200' E of 23 3/4 Rd in F 1/2 to 560 W of 24 Rd

C:\Civil 3D\Projects\24 Road Sewer Interceptor as built\24 road sewer interceptor.dwg, 08, 2/28/2013 3:22:58 PM



AS BUILT SAN SEW MH
STA 31+86.61, 1.66
N 47385.51
E 78529.85

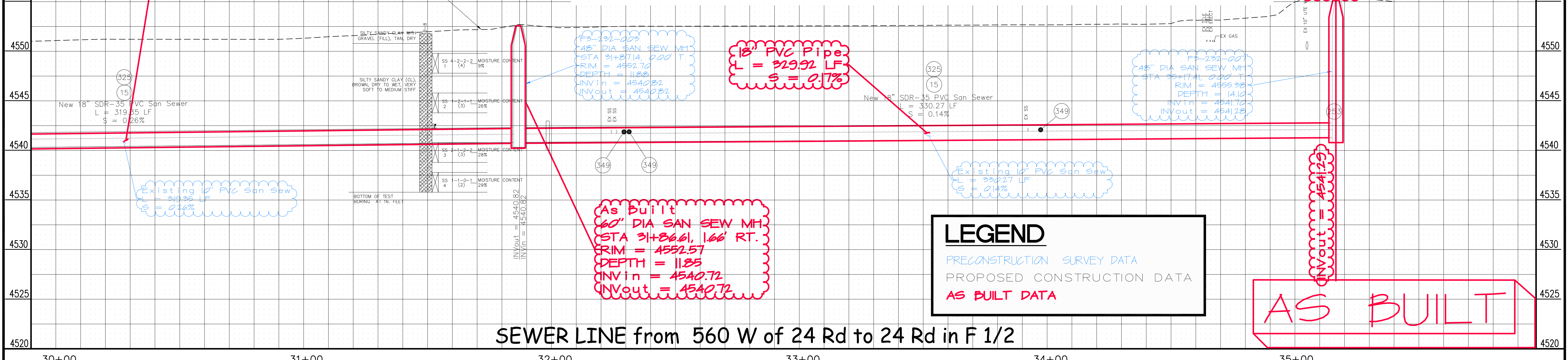
AS BUILT SAN SEW MH
STA 35+16.53, 0.08
N 47385.27
E 78859.77

MATCH LINE

2389 F 1/2 RD 2945-054-02-004 ROGER D MIRACLE
2393 F 1/2 RD 2945-054-02-003 EASTER LIVING TRUST
F 1/2 RD 2945-054-02-002 EASTER LIVING TRUST
649 24 RD 2945-054-02-001 KING REAL ESTATE LLC

CONSTRUCTION NOTES

- 1 202 - REMOVAL OF ASPHALT MAT. CUT AND REMOVE ASPHALT AS SHOWN. (INDICATED BY DOT HATCH PATTERN)
- 15 202 - REMOVAL OF PIPE AS SHOWN. (SIZE AND TYPE AS SHOWN ON PLAN)
- 16 202 - REMOVAL OF MANHOLE. CONTRACTOR SHALL SALVAGE RING AND COVER AND DELIVER TO CITY SHOPS.
- 253 CONNECT NEW 18" SDR-35 PVC SANITARY SEWER TO EXISTING 54" CONCRETE SANITARY SEWER PIPE OR EX MH SEE CITY STANDARD DETAIL D-12 FOR ADDITIONAL INFORMATION.
- 301 102.11/108.5 - SANITARY SEWER BASIC MANHOLE (60" I.D.). INCLUDES CONNECTION OF ADJACENT SEWER LINE, FORMING INVERTS AND ADJUSTING TO FINAL GRADE. (SEE CITY OF GRAND JUNCTION STANDARD DETAIL SS-02).
- 325 102.9/108.2 - 18" GRAVITY SEWER PIPE (SDR 35 PVC). INCLUDES TYPE A BEDDING AND HAUNCHING MATERIAL AND BACKFILL OF TRENCH WITH NATIVE MATERIALS MEETING 103.16 EARTH BACKFILL MATERIAL.
- 349 102.9/108.3 - SEWER SERVICE TAP. FULL BODY WYE (SEE STD. DETAIL SS-06).
- 358 103 - CLAY CUT-OFF WALL (INCIDENTAL TO SEWER INTALLATION PAY ITEM)
- 668 304 - AGGREGATE BASE COURSE (CLASS 3) (12" THICK)
- 679 401.08 - HOT BITUMINOUS PAVEMENT (8" THICK) (GRADING SX, BINDER GRADE PG 64-22) (THREE 2" LIFTS)
- 836 RESET UTILITY PEDESTAL (BY OTHERS).



18" PVC Pipe
L = 316.64 LF
S = 0.22%

18" PVC Pipe
L = 329.92 LF
S = 0.1%

AS BUILT
60" DIA SAN SEW
STA 35+16.53, 0.08
RIM = 4555.42
DEPTH = 14.12

AS BUILT
60" DIA SAN SEW MH
STA 31+86.61, 1.66 RT.
RIM = 4552.57
DEPTH = 11.85
INV in = 4540.72
INV out = 4542.72

LEGEND

PRECONSTRUCTION SURVEY DATA

PROPOSED CONSTRUCTION DATA

AS BUILT DATA

AS BUILT

SEWER LINE from 560 W of 24 Rd to 24 Rd in F 1/2

30+00 31+00 32+00 33+00 34+00 35+00

REVISION	DESCRIPTION	DATE	DRAWN BY	DATE
△			JCS	2011
△				
△				
△				

SCALES:	
PLAN	1" = 20'
HORIZONTAL	1" = 10'
VERTICAL	1" = 2'



PUBLIC WORKS
AND PLANNING
ENGINEERING DIVISION

24 Road Sewer Interceptor
SANITARY SEWER LINE PLAN AND PROFILE
from 560 W of 24 Rd to 24 Rd in F 1/2

C:\Civil 3D Projects\24 Road Sewer Interceptor as built\24 road sewer interceptor.dwg, 09, 2/28/2013 3:26:44 PM