

CITY OF GRAND JUNCTION, COLORADO

ORDINANCE NO. 3298

**AN ORDINANCE ANNEXING TERRITORY TO THE
CITY OF GRAND JUNCTION, COLORADO**

**EPHEMERAL RESOURCES ANNEXATION NO. 2
APPROXIMATELY 0.49 ACRES
LOCATED IN PORTIONS OF THE 29 ROAD AND D ROAD RIGHTS-OF-WAY**

WHEREAS, on the 6th day of September, 2000 the City Council of the City of Grand Junction considered a petition for the annexation of the following described territory to the City of Grand Junction; and

WHEREAS, a hearing on the petition was duly held after proper notice on the 18th day of October, 2000; and

WHEREAS, the City Council determined that said territory was eligible for annexation and that no election was necessary to determine whether such territory should be annexed.;

**NOW, THEREFORE, BE IT ORDAINED BY THE CITY COUNCIL OF THE
CITY OF GRAND JUNCTION, COLORADO:**

That the property situate in Mesa County, Colorado, and described to wit:

EPHEMERAL RESOURCES ANNEXATION NO.2

A parcel of land situate in Section 20, Township 1 South, Range 1 East of the Ute Meridian, County of Mesa, State of Colorado, being more particularly described as follows:

Beginning at the northwest corner of Section 20; thence N 90°00'00" E along the north line of the NW 1/4 of said Section 20 a distance of 1588.56 feet to a point; thence S 00°04'35" W a distance of 5.00 feet to a point; thence S 90°00'00" W along a line 5.00 feet south of and parallel with the north line of the NW 1/4 of said Section 20 a distance of 1583.56 feet to a point; thence S 00°07'18" W along a line 5.00 feet east of and parallel with the west line of the NW 1/4 NW 1/4 of said Section 20 a distance of 1255.01 feet to a point; thence S 89°52'42" E a distance of 5.00 feet to a point; thence S 00°07'18" W along a line 10.00' east of and parallel with the west line of said NW 1/4 NW 1/4 a distance of 69.37 feet to a point on the south line of the NW 1/4 NW 1/4 of said Section 20; thence S 00°07'18" W along a line 10.00 feet east of and parallel with the west line of the SW 1/4 NW 1/4 of said Section 20 a distance of 1320.13 feet to a point on the south line of said SW 1/4 NW 1/4; thence S 00°07'00" W along a line 10.00 feet

east of and parallel with the west line of the NW 1/4 SW 1/4 of said Section 20 a distance of 40.04 feet to a point; thence N 89°38'24" W a distance of 5.00 feet to a point; thence N 00°07'00" E along a line 5.00 feet east of and parallel with the west line of said NW 1/4 SW 1/4 a distance of 40.02 feet to a point on the north line of said NW 1/4 SW 1/4; thence N 00°07'18" E along a line 5.00 feet east of and parallel with the west line of the SW 1/4 NW 1/4 of said Section 20 a distance of 1320.13 feet to a point on the north line of said SW 1/4 NW 1/4; thence N 00°07'18" E along a line 5.00 feet east of and parallel with the west line of the NW 1/4 NW 1/4 of said Section 20 a distance of 64.37 feet to a point; thence N 89°52'42" W a distance of 5.00 feet to a point on the west line of said NW 1/4 NW 1/4; thence N 00°07'18" E along the west line of the NW 1/4 NW 1/4 of said Section 20 a distance of 1265.00 feet to the point of beginning.

be and is hereby annexed to the City of Grand Junction, Colorado.

INTRODUCED on first reading on the 6th day of September, 2000.

ADOPTED and ordered published this 18th day of October, 2000.

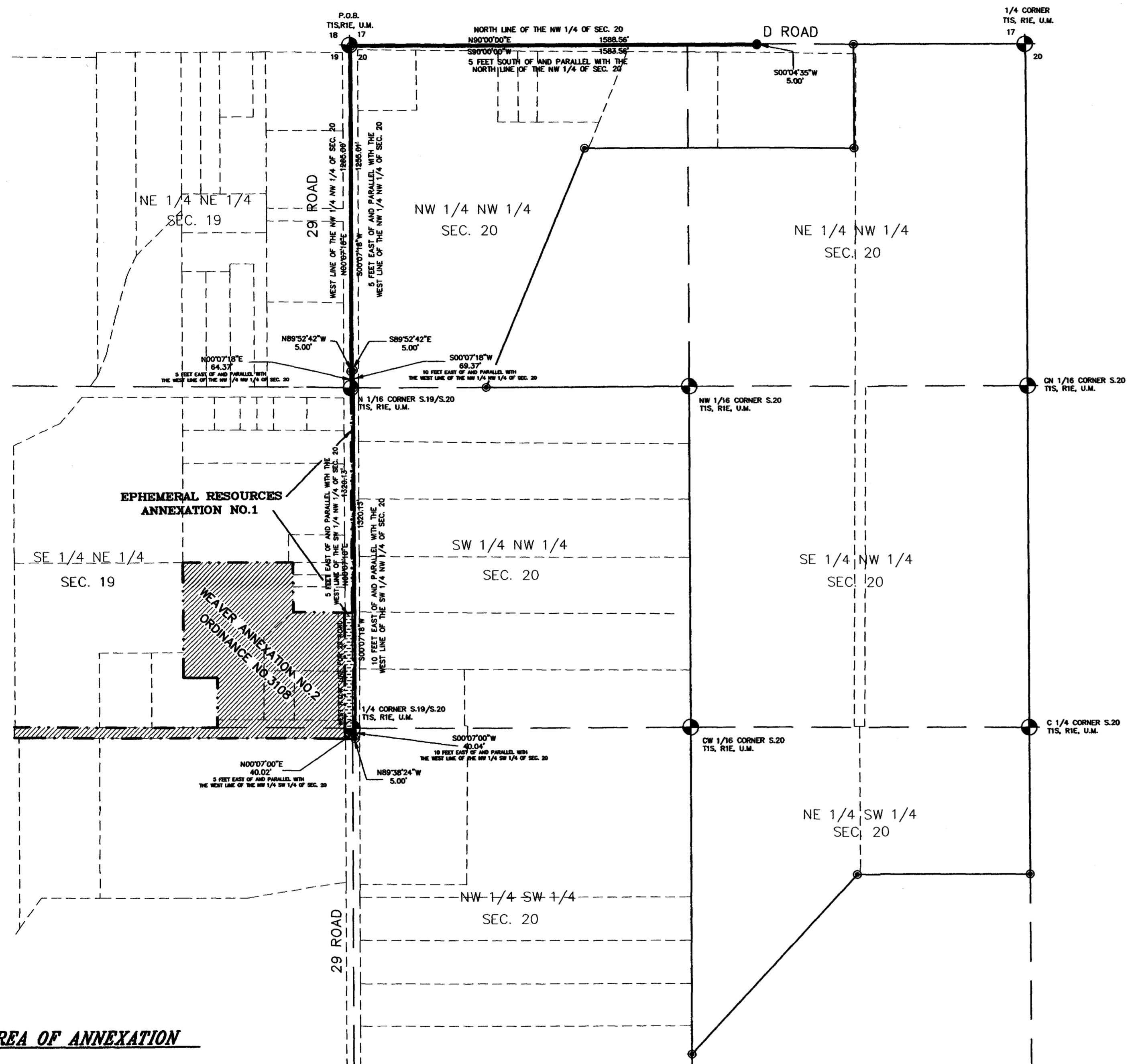
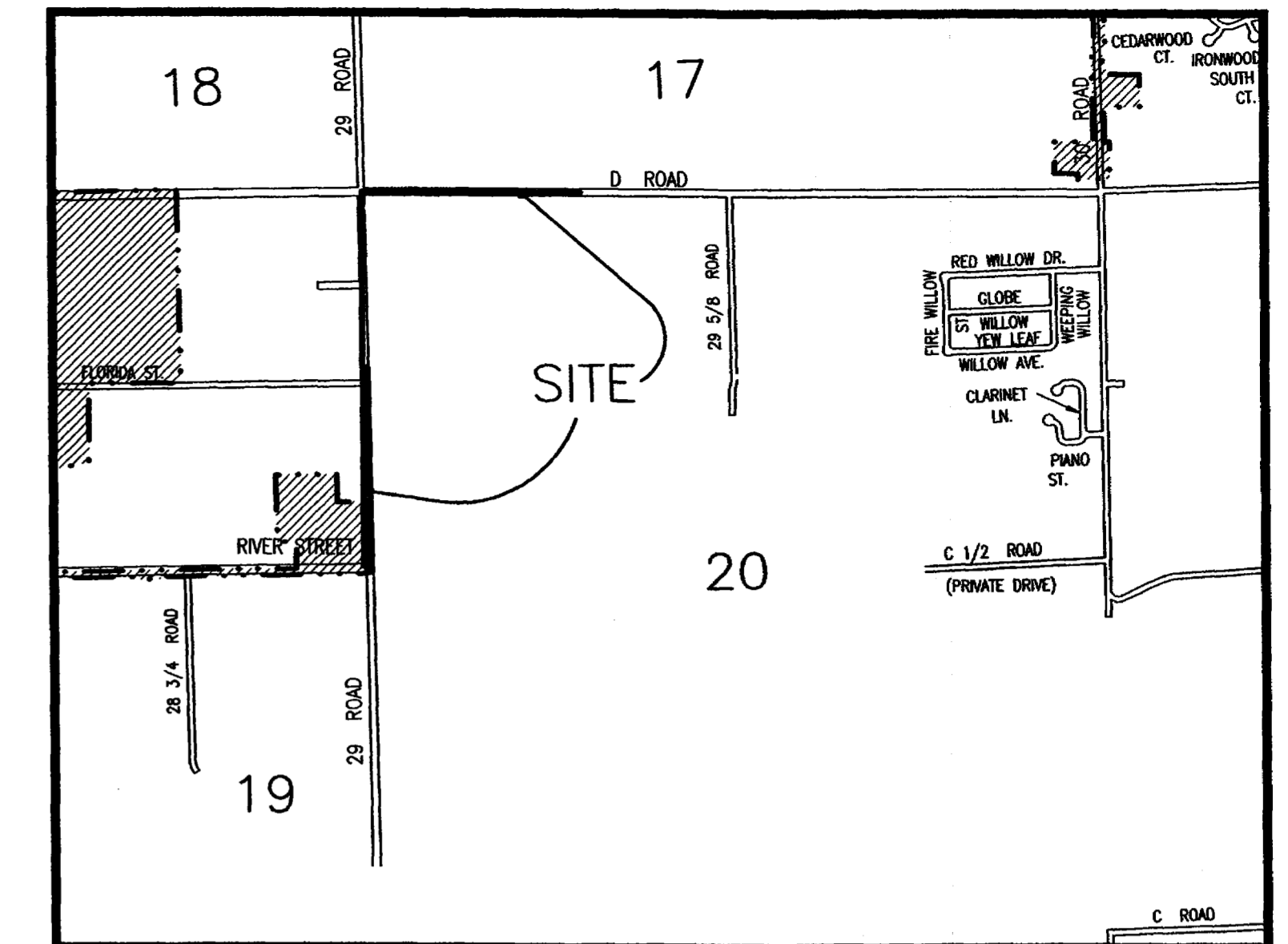
Attest:

/s/ Gene Kinsey
President of the Council

/s/ Stephanie Nye
City Clerk

EPHEMERAL RESOURCES ANNEXATION NO. 2

SITUATE IN SECTIONS 20, TOWNSHIP 1 SOUTH, RANGE 1 EAST, U.M.
COUNTY OF MESA, STATE OF COLORADO



LEGAL DESCRIPTION

A parcel of land situate in Section 20, Township 1 South, Range 1 East of the Ute Meridian, County of Mesa, State of Colorado, being more particularly described as follows:

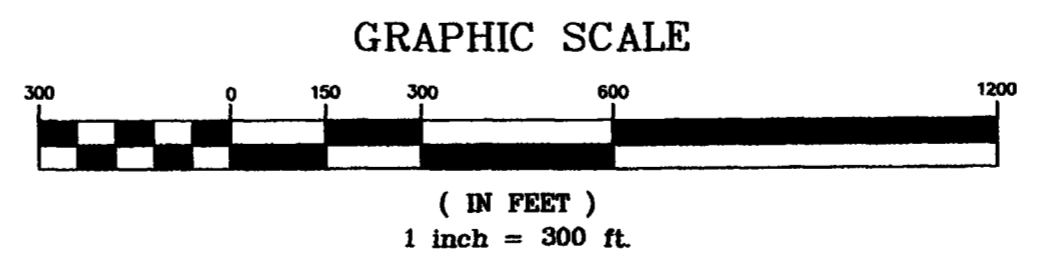
Beginning at the northwest corner of Section 20; thence N 90°00'00" E along the north line of the NW 1/4 of said Section 20 a distance of 1588.56 feet to a point; thence S 00°04'35" W a distance of 5.00 feet to a point; thence S 90°00'00" W along a line 5.00 feet south of and parallel with the north line of the NW 1/4 of said Section 20 a distance of 1583.56 feet to a point; thence S 00°07'18" W along a line 5.00 feet east of and parallel with the west line of the NW 1/4 NW 1/4 of said Section 20 a distance of 1255.01 feet to a point; thence S 89°52'42" E a distance of 5.00 feet to a point; thence S 00°07'18" W along a line 10.00' east of and parallel with the west line of said NW 1/4 NW 1/4 a distance of 69.37 feet to a point on the south line of the NW 1/4 NW 1/4 of said Section 20; thence S 00°07'18" W along a line 10.00 feet east of and parallel with the west line of the SW 1/4 NW 1/4 of said Section 20 a distance of 1320.13 feet to a point on the south line of said SW 1/4 NW 1/4; thence S 00°07'00" W along a line 10.00 feet east of and parallel with the west line of the NW 1/4 SW 1/4 of said Section 20 a distance of 40.04 feet to a point; thence N 89°38'24" W a distance of 5.00 feet to a point; thence N 00°07'00" E along a line 5.00 feet east of and parallel with the west line of said NW 1/4 SW 1/4 a distance of 40.02 feet to a point on the north line of said NW 1/4 SW 1/4; thence N 00°07'18" E along a line 5.00 feet east of and parallel with the west line of the SW 1/4 NW 1/4 of said Section 20 a distance of 1320.13 feet to a point on the north line of said SW 1/4 NW 1/4; thence N 00°07'18" E along a line 5.00 feet east of and parallel with the west line of the NW 1/4 NW 1/4 of said Section 20 a distance of 64.37 feet to a point; thence N 89°52'42" W a distance of 5.00 feet to a point on the west line of said NW 1/4 NW 1/4; thence N 00°07'18" E along the west line of the NW 1/4 NW 1/4 of said Section 20 a distance of 1265.00 feet to the point of beginning.

AREA OF ANNEXATION

ANNEXATION PERIMETER	8566.20 FT.
CONTIGUOUS PERIMETER	1429.52 FT.
AREA IN SQUARE FEET	21390.33
AREA IN ACRES	.49

LEGEND

ANNEXATION BOUNDARY	—————
EXISTING CITY LIMITS	- - - - -



The Description(s) contained herein have been derived from subdivision plats and deed descriptions as they appear in the office of the Mesa County Clerk and Recorder. This does not constitute a legal survey, and is not intended to be used as a means for establishing or verifying property boundaries.

Stan R. Pace
SENIOR REAL ESTATE TECHNICIAN, PLS 22580

ORDINANCE NO.
3298

EFFECTIVE DATE
NOVEMBER 19, 2000

Notice: According to Colorado law you have 60 days from the effective date shown herein to file a complaint based upon any defect on this plat. If no complaint is filed within said 60 days then said plat stands despite all defects and/or errors.

DRAWN BY SRP DATE 7-26-2000
DESIGNED BY _____ DATE _____
CHECKED BY _____ DATE _____
APPROVED BY _____ DATE _____

SCALE
1" = 300'

DEPARTMENT OF PUBLIC WORKS AND UTILITIES
ENGINEERING AND TECHNICAL SERVICES DIVISIONS
CITY OF GRAND JUNCTION, COLORADO

EPHEMERAL RESOURCES ANNEXATION NO.2
Ephem2.dwg