

CITY OF GRAND JUNCTION, COLORADO

ORDINANCE NO. 3329

**AN ORDINANCE ANNEXING TERRITORY TO THE
CITY OF GRAND JUNCTION, COLORADO**

MOORE ANNEXATION

APPROXIMATELY 4.87 ACRES

**LOCATED 457 31 Road and
Including a portion of the 31 Road and E Road Rights-of-way**

WHEREAS, on the 17th day of January, 2001, the City Council of the City of Grand Junction considered a petition for the annexation of the following described territory to the City of Grand Junction; and

WHEREAS, a hearing on the petition was duly held after proper notice on the 7th day of March, 2001; and

WHEREAS, the City Council determined that said territory was eligible for annexation and that no election was necessary to determine whether such territory should be annexed.

**NOW, THEREFORE, BE IT ORDAINED BY THE CITY COUNCIL OF THE
CITY OF GRAND JUNCTION, COLORADO:**

That the property situate in Mesa County, Colorado, and described to wit:

A parcel of land situate in the NE 1/4 of Section 16 and in the NW 1/4 of Section 15, Township 1 South, Range 1 East of the Ute Meridian, County of Mesa, State of Colorado, being more particularly described as follows:

Beginning at the northwest corner of the NE 1/4 NE 1/4 of said Section 16; thence N 89°50'50" E along the north line of said NE 1/4 NE 1/4 a distance of 1321.94 feet to the northeast corner of said Section 16; thence S 89°53'57" E along the north line of the NW 1/4 NW 1/4 of said Section 15 a distance of 495.00 feet to a point; thence S 00°00'00" E a distance of 5.00 feet to a point; thence N 89°53'57" W along a line 5.00 feet south of and parallel with the north line of the NW 1/4 NW 1/4 of said Section 15 a distance of 495.00 feet to a point on the west line of the NW 1/4 NW 1/4 of said Section 15; thence S 00°00'00" E

along the west line of said NW 1/4 NW 1/4 a distance of 875.00 feet to a point; thence S 89°53'57" E a distance of 30.00 feet to a point on the east right of way line for 31 Road; thence along the east right of way line for said 31 Road the following 3 courses:

- 1) S 00°00'00" E a distance of 439.61 feet to a point on the north line of the SW 1/4 NW 1/4 of said Section 15;
- 2) S 89°55'51" E along the north line of said SW 1/4 NW 1/4 a distance of 10.00 feet to a point;

- 3) S 00°00'00" E a distance of 959.56 feet to a point; thence crossing said 31 Road right of way S 90°00'00" W a distance of 73.00 feet to a point on the west right of way line for said 31 Road; thence leaving said west right of way line N 90°00'00" W a distance of 462.00 feet to a point; thence N 00°00'00" E a distance of 140.00 feet to a point; thence N 90°00'00" E a distance of 310.00 feet to a point; thence S 00°00'00" E a distance of 36.00 feet to a point; thence N 90°00'00" E a distance of 152.00 feet to a point on the west right of way line for said 31 Road; thence leaving said west right of way line N 90°00'00" E a distance of 33.00 feet to a point on the east line of the SE 1/4 NE 1/4 of said Section 16; thence N 00°00'00" E along the east line of said SE 1/4 NE 1/4 a distance of 405.74 feet to a point; thence leaving said east line S 89°49'10" W a distance of 25.00 feet to a point on the west right of way line for said 31 Road; thence along the west right of way line for said 31 Road the following 4 courses:

- 1) N 00°00'00" W a distance of 449.87 feet to a point on the south line of the NE 1/4 NE 1/4 of said Section 16;
- 2) S 89°49'10" W along the south line of said NE 1/4 NE 1/4 a distance of 5.00 feet to a point;
- 3) N 00°00'00" E a distance of 1259.57 feet to a point;
- 4) 31.47 feet along the arc of a curve to the left having a radius of 20.00 feet, a delta angle of 90°09'10" and a long chord bearing N 45°04'35" W a distance of 28.32 feet to a point on the south right of way line for E Road;

thence along the south right of way line for said E Road the following 5 courses:

- 1) S 89°50'50" W a distance of 348.52 feet to a point;
- 2) N 00°00'12" E a distance of 10.00 feet to a point;
- 3) S 89°50'50" W a distance of 262.38 feet to a point;
- 4) S 00°01'40" E a distance of 3.00 feet to a point;
- 5) S 89°50'50" W a distance of 660.96 feet to a point on the west line of the NE 1/4 NE 1/4 of said Section 16; thence N 00°03'17" W along the west line of said NE 1/4 NE 1/4 a distance of 33.00 feet to the point of beginning.

be and is hereby annexed to the City of Grand Junction, Colorado.

INTRODUCED on first reading on the 17th day January, 2001.

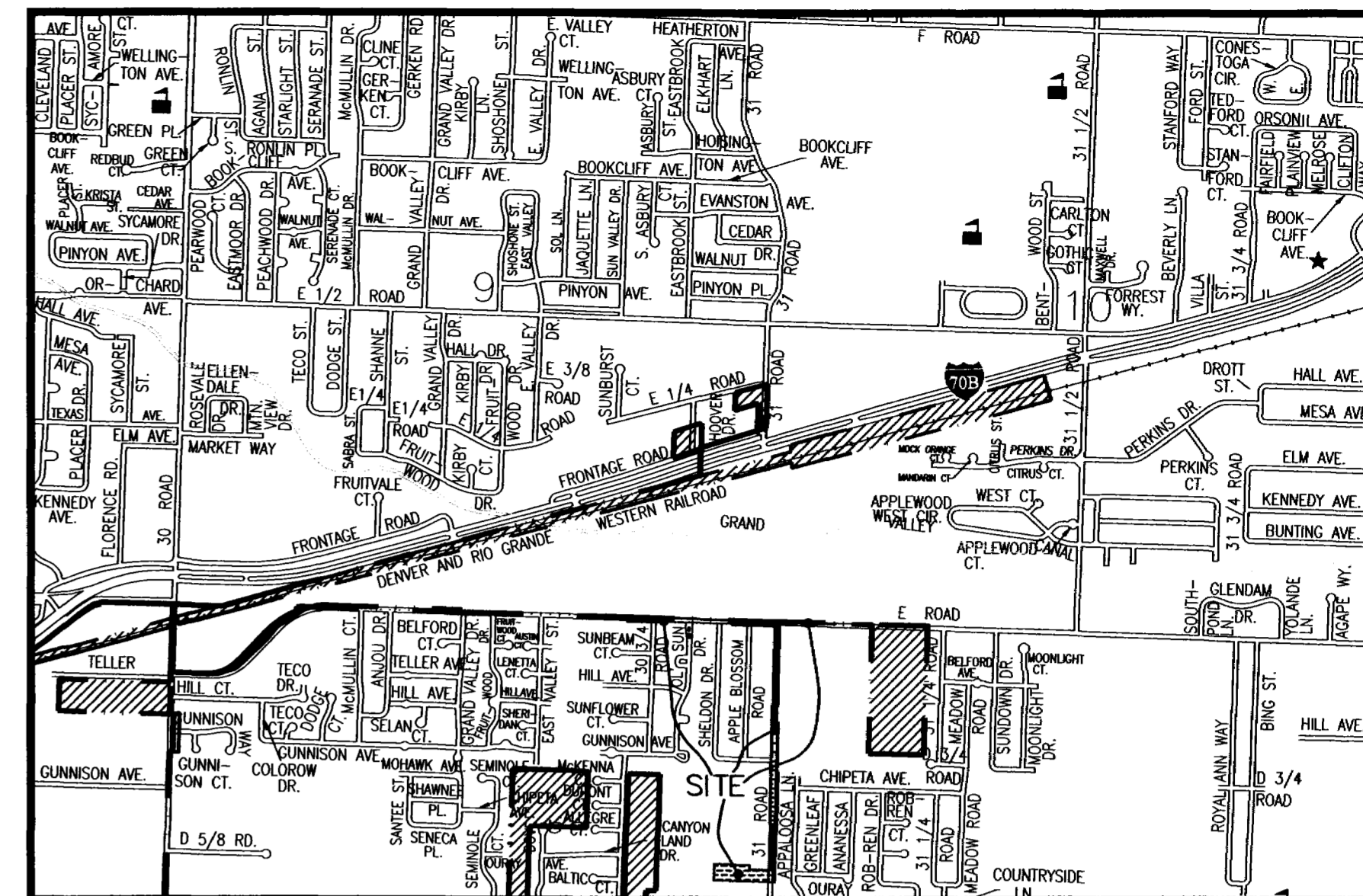
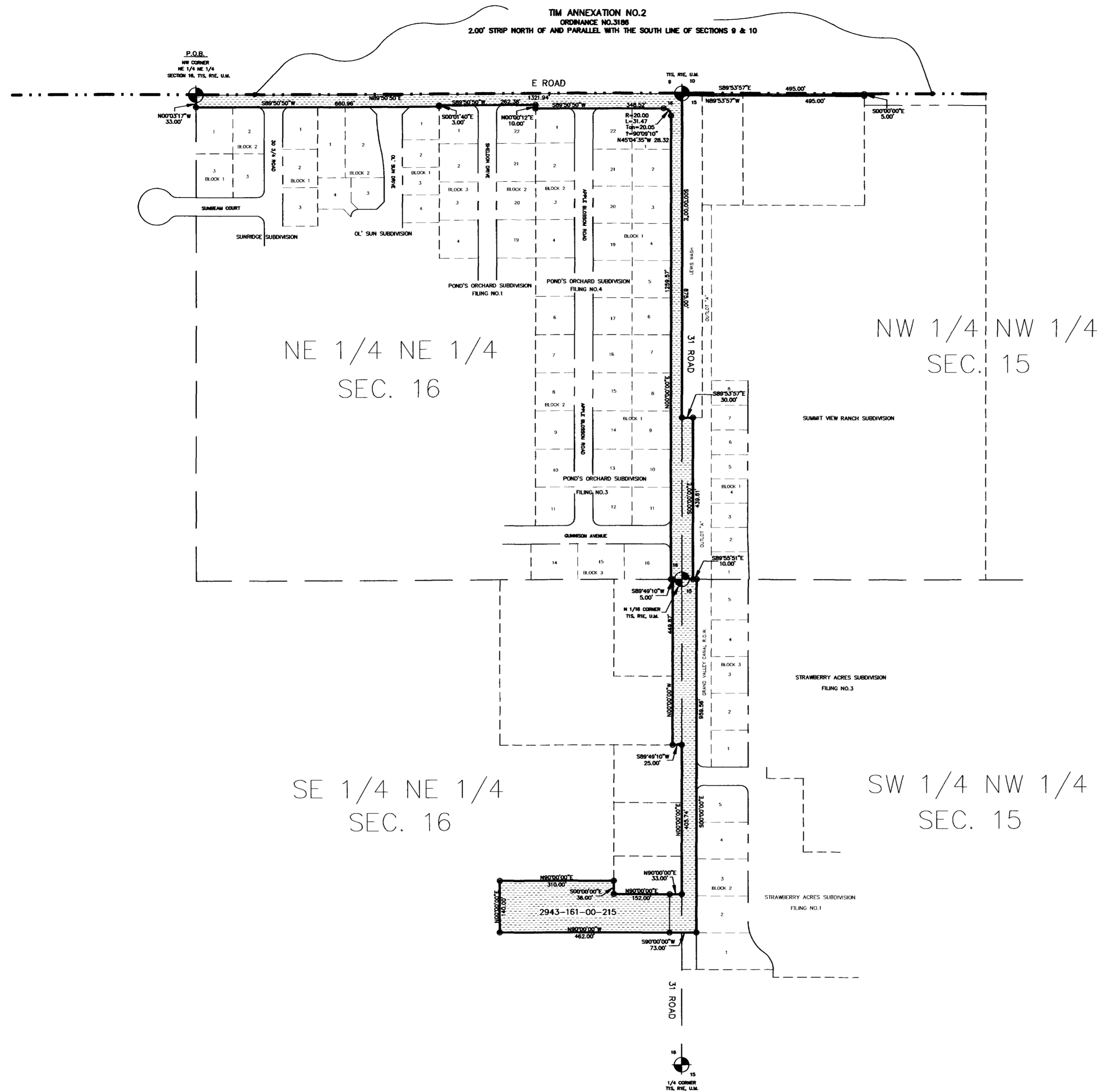
ADOPTED and ordered published this 7th day of March, 2000.

Attest:

/s/ Gene Kinsey
President of the Council

/s/ Stephanie Nye
City Clerk

MOORE ANNEXATION



LEGAL DESCRIPTION

A parcel of land situate in the NE 1/4 of Section 16 and in the NW 1/4 of Section 15, Township 1 South, Range 1 East of the Ute Meridian, County of Mesa, State of Colorado, being more particularly described as follows:

Beginning at the northwest corner of the NE 1/4 NE 1/4 of said Section 16; thence N 89°50'50" E along the north line of said NE 1/4 NE 1/4 a distance of 1321.94 feet to the northeast corner of said Section 16; thence S 89°53'57" E along the north line of the NW 1/4 NW 1/4 of said Section 15 a distance of 495.00 feet to a point; thence S 00°00'00" E a distance of 5.00 feet to a point; thence N 89°53'57" W along a line 5.00 feet south of and parallel with the north line of the NW 1/4 NW 1/4 of said Section 15 a distance of 495.00 feet to a point on the west line of the NW 1/4 NW 1/4 of said Section 15; thence S 00°00'00" E along the west line of said NW 1/4 NW 1/4 a distance of 875.00 feet to a point; thence S 89°53'57" E a distance of 30.00 feet to a point on the east right of way line for 31 Road; thence along the east right of way line for said 31 Road the following 3 courses:

- 1) S 00°00'00" E a distance of 439.61 feet to a point on the north line of the SW 1/4 NW 1/4 of said Section 15;
- 2) S 89°55'51" E along the north line of said SW 1/4 NW 1/4 a distance of 10.00 feet to a point;
- 3) S 00°00'00" E a distance of 959.56 feet to a point;

thence crossing said 31 Road right of way S 90°00'00" W a distance of 73.00 feet to a point on the west right of way line for said 31 Road; thence leaving said west right of way line N 90°00'00" W a distance of 462.00 feet to a point; thence N 00°00'00" E a distance of 140.00 feet to a point; thence N 90°00'00" E a distance of 310.00 feet to a point; thence S 00°00'00" E a distance of 36.00 feet to a point; thence N 90°00'00" E a distance of 152.00 feet to a point on the west right of way line for said 31 Road; thence leaving said west right of way line N 90°00'00" E a distance of 33.00 feet to a point on the east line of the SE 1/4 NE 1/4 of said Section 16; thence N 00°00'00" E along the east line of said SE 1/4 NE 1/4 a distance of 405.74 feet to a point; thence leaving said east line S 89°49'10" W a distance of 25.00 feet to a point on the west right of way line for said 31 Road; thence along the west right of way line for said 31 Road the following 4 courses:

- 1) N 00°00'00" W a distance of 449.87 feet to a point on the south line of the NE 1/4 NE 1/4 of said Section 16;
- 2) S 89°49'10" W along the south line of said NE 1/4 NE 1/4 a distance of 5.00 feet to a point;
- 3) N 00°00'00" E a distance of 1259.57 feet to a point;
- 4) 31.47 feet along the arc of a curve to the left having a radius of 20.00 feet, a delta angle of 90°09'10" and a long chord bearing N 45°04'35" W a distance of 28.32 feet to a point on the south right of way line for E Road;

thence along the south right of way line for said E Road the following 5 courses:

- 1) S 89°50'50" W a distance of 348.52 feet to a point;
- 2) N 00°00'12" E a distance of 10.00 feet to a point;
- 3) S 89°50'50" W a distance of 262.38 feet to a point;
- 4) S 00°01'40" E a distance of 3.00 feet to a point;
- 5) S 89°50'50" W a distance of 660.96 feet to a point on the west line of the NE 1/4 NE 1/4 of said Section 16;

thence N 00°03'17" W along the west line of said NE 1/4 NE 1/4 a distance of 33.00 feet to the point of beginning.

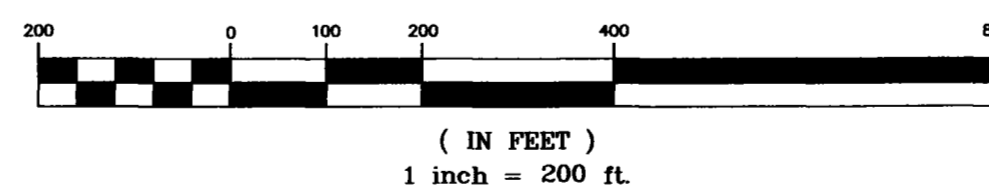
AREA OF ANNEXATION

ANNEXATION PERIMETER	9331.61 FT.
CONTIGUOUS PERIMETER	1816.94 FT.
AREA IN SQUARE FEET	212057.53
AREA IN ACRES	4.87

LEGEND

ANNEXATION BOUNDARY	—————
EXISTING CITY LIMITS	- - - - -

GRAPHIC SCALE

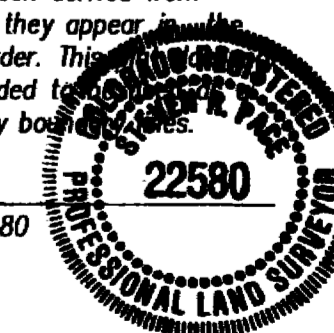


ORDINANCE NO.
3329

EFFECTIVE DATE
APRIL 8, 2001

The Description(s) contained herein have been derived from subdivision plats and deed descriptions as they appear in the office of the Mesa County Clerk and Recorder. This constitutes a legal survey, and is not intended to be used as a means for establishing or verifying property boundaries.

Steve R. Papp
SENIOR REAL ESTATE TECHNICIAN, PLS 22580



Notice:
According to Colorado law you have 60 days from the effective date shown hereon to file a complaint based upon any defect on this plot. If no complaint is filed within said 60 days then said plot stands despite all defects and or errors.

DRAWN BY	SRP	DATE	01-09-2001
DESIGNED BY		DATE	
CHECKED BY		DATE	
APPROVED BY		DATE	

SCALE
1" = 200'

DEPARTMENT OF PUBLIC WORKS AND UTILITIES
ENGINEERING AND TECHNICAL SERVICES DIVISIONS
CITY OF GRAND JUNCTION, COLORADO

MOORE ANNEXATION