

CITY OF GRAND JUNCTION, COLORADO

ORDINANCE NO. 3332

**AN ORDINANCE ANNEXING TERRITORY TO THE
CITY OF GRAND JUNCTION, COLORADO**

TRAVER ANNEXATION No. 1

APPROXIMATELY 0.54 ACRES

**LOCATED 2986 D Road and
Including a portion of the D Road Right-of-way**

WHEREAS, on the 7th day of February, 2001, the City Council of the City of Grand Junction considered a petition for the annexation of the following described territory to the City of Grand Junction; and

WHEREAS, a hearing on the petition was duly held after proper notice on the 21st day of March, 2001; and

WHEREAS, the City Council determined that said territory was eligible for annexation and that no election was necessary to determine whether such territory should be annexed.

**NOW, THEREFORE, BE IT ORDAINED BY THE CITY COUNCIL OF THE
CITY OF GRAND JUNCTION, COLORADO:**

**That the property situate in Mesa County, Colorado, and described to
wit:**

TRAVER ANNEXATION NO.1

A parcel of land situate in the SW 1/4 SW 1/4 of Section 16, the SE 1/4 SE 1/4 of Section 17, the NE 1/4 NE 1/4 of Section 20 and in the NW 1/4 NW 1/4 of Section 21 all in Township 1 South, Range 1 East of the Ute Meridian, County of Mesa, State of Colorado, being more particularly described as follows:

Beginning at the SE corner of said Section 17; thence S 89°59'45" E along the south line of the SW 1/4 SW 1/4 of said Section 16 a distance of 60.00 feet to a point; thence leaving said south line S 00°01'05" W a distance of 5.00 feet to a point; thence N 89°59'45" W along a line 5.00 feet south of and parallel with the north line of the NW 1/4 NW 1/4 of said Section 21 a distance of 60.00 feet to a

point on the east line of the NE 1/4 NE 1/4 of said Section 20; thence S 89°57'32" W along a line 5.00 feet south of and parallel with the north line of said NE 1/4 NE 1/4 a distance of 337.49 feet to a point; thence N 00°01'40" W a distance of 5.00 feet to a point on the south line of the SE 1/4 SE 1/4 of said Section 17; thence N 00°01'40" W a distance of 1049.98 feet to a point; thence along a line 10.00 south of and parallel with the approximate southerly right of way line for the Grand Valley Irrigation Company Canal the following 3 courses:

- 1) N 84°09'52" W a distance of 56.91 feet to a point;
- 2) S 78°48'05" W a distance of 251.29 feet to a point;
- 3) S 79°21'59" W a distance of 138.83 feet to a point;

thence N 11°21'09" W a distance of 10.00 feet to a point on the approximate southerly right of way line for said Grand Valley Irrigation Company Canal; thence along said approximate southerly right of way line the following 3 courses:

- 1) N 79°21'59" E a distance of 138.86 feet to a point;
- 2) N 78°48'05" E a distance of 252.79 feet to a point;
- 3) S 84°09'52" E a distance of 67.43 feet to the northwest corner of Lot 5 of Wilkinson Subdivision;

thence S 00°01'40" E along the east line of the west 990.00 feet of the SE 1/4 SE 1/4 of said Section 17 a distance of 795.00 feet to the southwest corner of Lot 1 of said Wilkinson Subdivision; thence continuing along the east line of the west 990.00 feet of the SE 1/4 SE 1/4 of said Section 17 S 00°01'40" E a distance of 223.00 feet to a point on the north right of way line for D Road; thence N 89°57'32" E along said north right of way line a distance of 162.49 feet to a point; thence leaving said north right of way line S 00°01'40" E a distance of 41.00 feet to a point on the south line of the SE 1/4 SE 1/4 of said Section 17; thence N 89°57'32" E along the south line of said SE 1/4 SE 1/4 a distance of 165.00 feet to the point of beginning.

be and is hereby annexed to the City of Grand Junction, Colorado.

INTRODUCED on first reading on the 7th day of February, 2001.

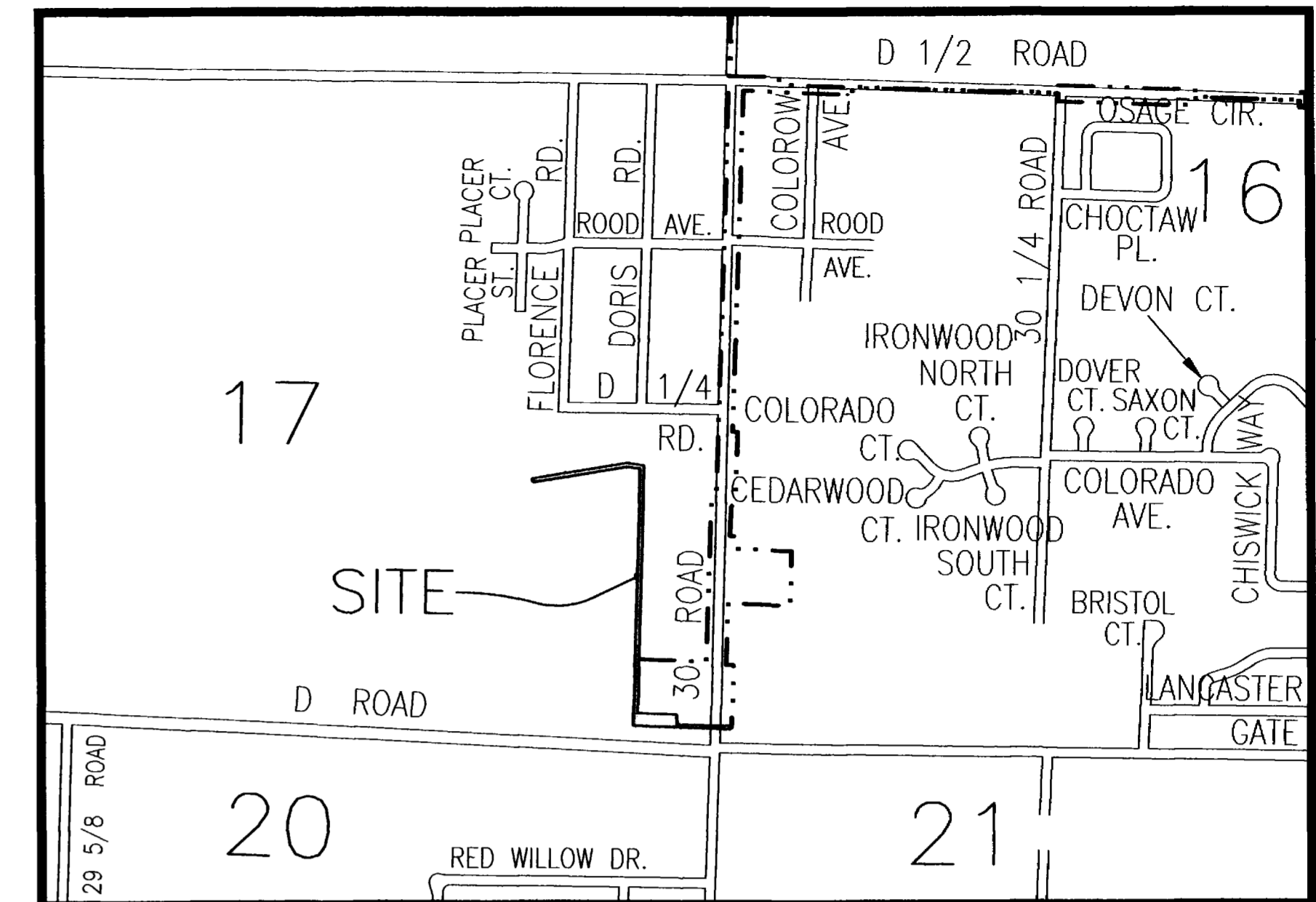
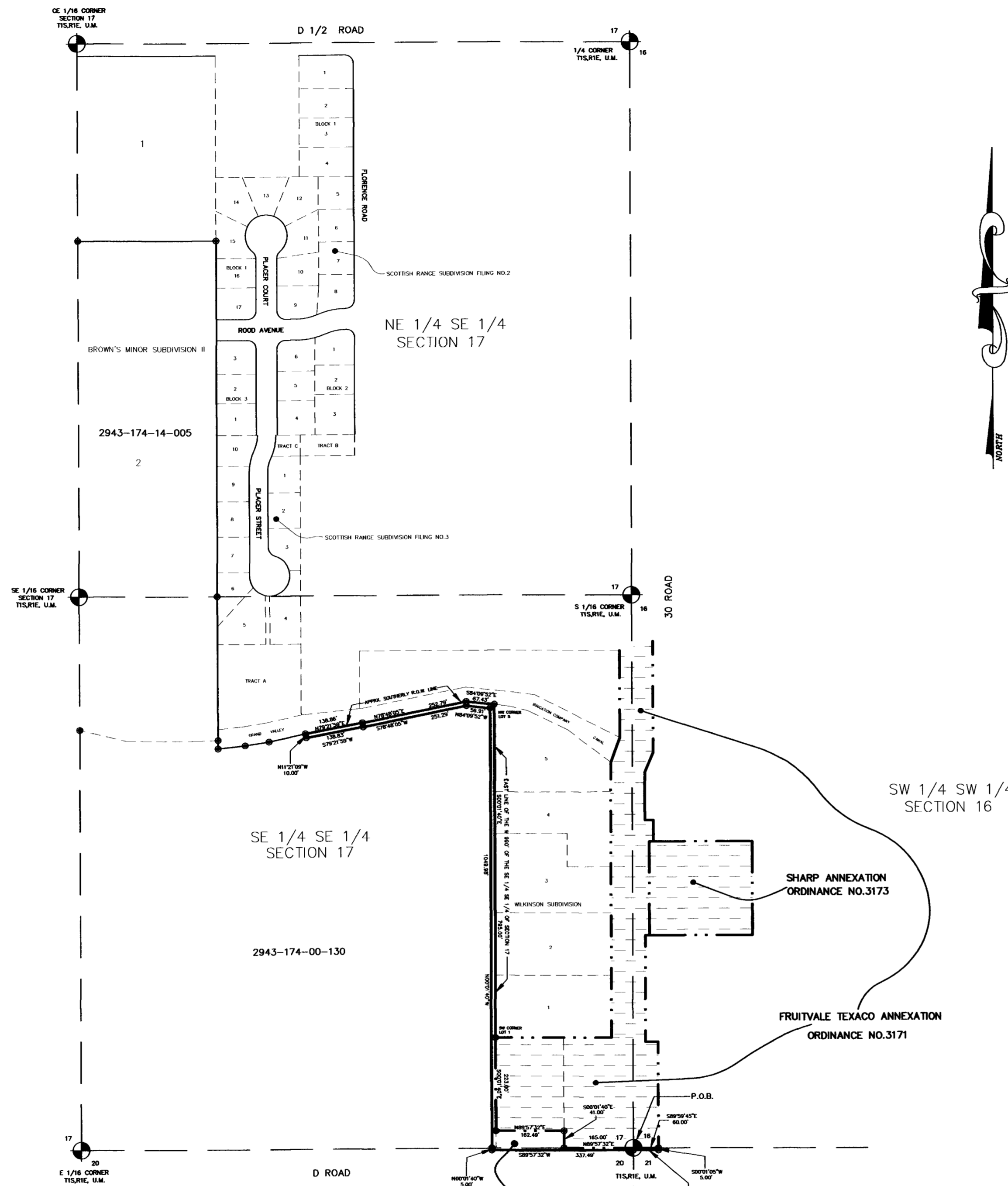
ADOPTED and ordered published this 21st day of March, 2001.

Attest:

/s/ Gene Kinsey
President of the Council

/s/ Stephanie Nye
City Clerk

TRAVER ANNEXATION NO.1



LEGAL DESCRIPTION

A parcel of land situate in the SW 1/4 SW 1/4 of Section 16, the SE 1/4 SE 1/4 of Section 17, the NE 1/4 NE 1/4 of Section 20 and in the NW 1/4 NW 1/4 of Section 21 all in Township 1 South, Range 1 East of the Ute Meridian, County of Mesa State of Colorado, being more particularly described as follows:

Beginning at the SE corner of said Section 17; thence S 89°59'45" E along the south line of the SW 1/4 SW 1/4 of said Section 16 a distance of 60.00 feet to a point; thence leaving said south line S 00°01'05" W a distance of 5.00 feet to a point; thence N 89°59'45" W along a line 5.00 feet south of and parallel with the north line of the NW 1/4 NW 1/4 of said Section 21 a distance of 60.00 feet to a point on the east line of the NE 1/4 NE 1/4 of said Section 20; thence S 89°57'32" W along a line 5.00 feet south of and parallel with the north line of said NE 1/4 NE 1/4 a distance of 337.49 feet to a point; thence N 00°01'40" W a distance of 5.00 feet to a point on the south line of the SE 1/4 SE 1/4 of said Section 17; thence N 00°01'40" W a distance of 1049.98 feet to a point; thence along a line 10.00 south of and parallel with the approximate southerly right of way line for the Grand Valley Irrigation Company Canal the following 3 courses:

- 1) N 84°09'52" W a distance of 56.91 feet to a point;
- 2) S 78°48'05" W a distance of 251.29 feet to a point;
- 3) S 79°21'59" W a distance of 138.83 feet to a point;

thence N 11°21'09" W a distance of 10.00 feet to a point on the approximate southerly right of way line for said Grand Valley Irrigation Company Canal; thence along said approximate southerly right of way line the following 3 courses:

- 1) N 79°21'59" E a distance of 138.86 feet to a point;
- 2) N 78°48'05" E a distance of 252.79 feet to a point;
- 3) S 84°09'52" E a distance of 67.43 feet to the northwest corner of Lot 5 of Wilkinson Subdivision;

thence S 00°01'40" E along the east line of the west 990.00 feet of the SE 1/4 SE 1/4 of said Section 17 a distance of 795.00 feet to the southwest corner of Lot 1 of said Wilkinson Subdivision; thence continuing along the east line of the west 990.00 feet of the SE 1/4 SE 1/4 of said Section 17 S 00°01'40" E a distance of 223.00 feet to a point on the north right of way line for D Road; thence N 89°57'32" E along said north right of way line a distance of 162.49 feet to a point; thence leaving said north right of way line S 00°01'40" E a distance of 41.00 feet to a point on the south line of the SE 1/4 SE 1/4 of said Section 17; thence N 89°57'32" E along the south line of said SE 1/4 SE 1/4 a distance of 165.00 feet to the point of beginning.

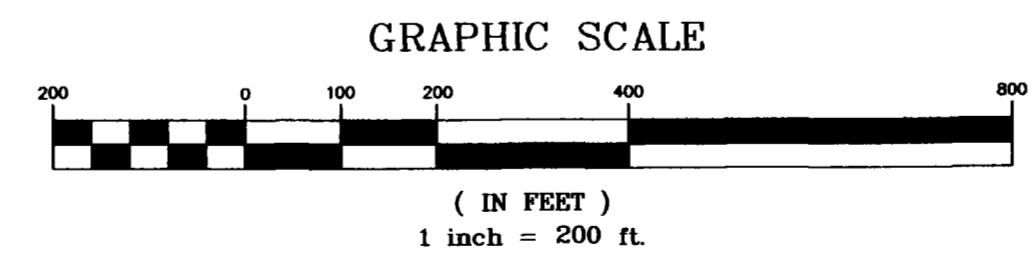
TRAVER ANNEXATION NO. 1

AREA OF ANNEXATION

ANNEXATION PERIMETER	3820.07 FT.
CONTIGUOUS PERIMETER	651.49 FT.
AREA IN SQUARE FEET	23728.82
AREA IN ACRES	0.54

LEGEND

ANNEXATION BOUNDARY	—————
EXISTING CITY LIMITS	- - - - -



ORDINANCE NO.
3332

EFFECTIVE DATE
APRIL 21, 2001

The Description(s) contained herein have been derived from subdivision plats and deed descriptions as they appear in the office of the Mesa County Clerk and Recorder. This does not constitute a legal survey, and is not intended to be used as a means for establishing or verifying property boundaries.

Star R. Pace
SENIOR REAL ESTATE TECHNICIAN, PLS 22580

Notice:
According to Colorado law you have 60 days from the effective date shown hereon to file a complaint based upon any defect on this plat. If no complaint is filed within said 60 days then said plat stands despite all defects and or errors.

DRAWN BY SRP	DATE 1-26-2001	SCALE
DESIGNED BY	DATE	1" = 200'
CHECKED BY	DATE	
APPROVED BY	DATE	

DEPARTMENT OF PUBLIC WORKS AND UTILITIES
ENGINEERING AND TECHNICAL SERVICES DIVISIONS
CITY OF GRAND JUNCTION, COLORADO

TRAVER ANNEXATION NO.1

TRAVERT.DWG